

NEWS

The magazine of Auto-Sleeper Owners' Club

FEBRUARY 2023



NOTICE

THE THIRTY-FOURTH ANNUAL GENERAL MEETING
OF
THE AUTO-SLEEPER OWNERS' CLUB
will be held on
SATURDAY 29 April 2023
at 10.30 am

held at the National Rally in the Cedric Ford Pavilion
Newark and Nottinghamshire Agricultural Society Showground
Newark Nottinghamshire

Nomination forms for election to the Management Committee/Honorary Examiner and Proxy appointment forms are included with this Notice or are available from the Secretary, who requests that Nomination forms and any resolutions for consideration at the meeting should be received by him, on or before Monday 6 February 2023.

In the case of Proxy appointment forms they should be received by him on or before 10.30am Thursday 27 April 2023.

Members are informed that they have a right to appoint a proxy.

Members are reminded that admission to the Annual General Meeting is subject to proof of membership, and that current membership cards should be carried at all Club events.

John Osland-Jones, *Secretary*
Flat 7, Oak Tree Court
15 Pembroke Way
Hall Green
Birmingham B28 9EX



THE AUTO-SLEEPER OWNERS' CLUB

A company Limited by Guarantee, registered in England and Wales

Registered Office:

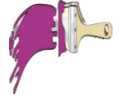
Orchard Works, Nr. Broadway, Worcestershire. WR12 7QF



Take part in a painting exhibition



AT THE NATIONAL RALLY & AGM 2023
IN THE SIR STUART GOODWIN HALL



We are looking for volunteers to exhibit their painting crafts

- Oil or water-colour paintings.
- Painting by numbers, which is still a craft.
- Want to hold a painting workshop for two hours on Saturday afternoon?
- Willing to sit and paint to an audience of members? We will set you up.
- Can you help set up the exhibition?

This is not a competition to see who is best, it is for like-minded members who paint for a hobby and are willing to show and exhibit what they can do. We are happy to include any member.

Please contact **Stuart Wood** below by email, phone, or post.

stuwd@yahoo.co.uk regalia@asoc.uk.com phone: 01484 604133

26 Burton Acres Way, High Burton, Huddersfield HD8 0RF

PUBLICATION DETAILS: The opinions, beliefs, viewpoints or advertisements expressed by contributors to ASOC News do not necessarily reflect those of the Club or Editor.
 Contributions from members are published in good faith. All care is taken to ensure accuracy but no modification or suggestion has been tested by the Club or the Editor. No warranties are expressed or implied nor indemnities given. You try them at your own risk.

SUPPLIER DISCOUNTS: The list is available on the website

The contents in any issue of ASOC News are subject to copyright and cannot be reproduced or used in any form without the permission of the Editor, who reserves the right to edit or omit any items.



News is the magazine of the
AUTO-SLEEPER OWNERS' CLUB
A Company Limited by Guarantee

Registered Office:
Orchard Works, Willersey,
Worcestershire WR12 7QF
Registered No: 4616969

President: Charles Trevelyan

Chairman: Steve Ryan *chairman@asoc.uk.com*

Vice Chair: Chris Brown *vicechairman@asoc.uk.com*

Secretary: John Osland-Jones *secretary@asoc.uk.com*

Treasurer: Carol Ryan *treasurer@asoc.uk.com*

Rally Coordinator: Martin Ross *rally@asoc.uk.com*

Technical, Group Chairman: Steve Ryan *chairman@asoc.uk.com*

Club Shop: Stuart Wood *regalia@asoc.uk.com*

Publications: John Morris *editor@asoc.uk.com*

Membership Secretary: Jean Downie *membershipsec@asoc.uk.com*

Charities & Exhibitions: Liz Irvin *charities@asoc.uk.com*

Minute Secretary: Chris Brown *minutsec@asoc.uk.com*

Chair, National Rally: Martin Ross *national@asoc.uk.com*

Technical Adviser to ASOC: Dennis Downie *technical@asoc.uk.com*

Website: www.asoc.uk.com

Editor's view

The views expressed by the editor may not be the views of the committee or ASOC

Welcome to February News

We have had many members moving over to digital PDF only for the magazine. If any member would like to take up this option, just let us know.

Although February is traditionally a quiet month, various rallies are now available to book and are beginning to appear in News. See page 12.

The National Rally and AGM at Newark has plenty of pitches, all with electric hookup, and evening entertainment on Friday and Saturday, so start booking now. You can use the booking forms in the member area or the paper copy which came with last month's News.

Now for a reminder that we still need members to come forward and join the Committee. At the moment the existing Committee are doubling up on several aspects of running the Club. So, we are still looking for a Rally Coordinator, Technical Officer and News Editor. If you need more information, let Steve, our Chairman, know, or any of the Committee.

The Club LPG website has been updated with a few more filling stations, kindly sent in by members. If you have any you have used, please let us know.

PHOTOGRAPHIC COMPETITION



submit up to four photographs

photo size 6 x 4 or 7 x 5 inches

Entries should be sent with your name, address, membership number, and title of your photograph

by post to: John Osland-Jones

Flat 7, Oak Tree Court, 15 Pembroke Way, Hall Green, Birmingham B28 9EX

by email: news@asoc.uk.com

jpeg image should be no larger than three megabyte

ENTRIES CLOSE 4 APRIL 2023

**APPEARING IN THE SIR STUART GOODWIN PAVILION
AT THE NATIONAL 27 APRIL - 1 MAY 2023**

**FRIDAY 10.00 - 12.30 & 13.30 - 16.30
SATURDAY 13.30 - 16.00**

BRING AND BUY TABLES IN THE
PAVILION OFFERING NUMEROUS
GOODS TO BUY

TEA AND COFFEE STALL

volunteers needed to run the stall

TOMBOLA

PLEASE BRING ANY BOTTLES TO DONATE
TO THE TOMBOLA

**JIGSAWS, BOOKS AND MOTORHOME
PARTS FOR SALE**

PLEASE BRING YOUR SURPLUS JIGSAWS, BOOKS
AND MOTORHOME PARTS ON THE THURSDAY

**CLUB REGALIA WITH THE USUAL ITEMS AND
MAYBE SOME NEW ONES**

RAFFLE TICKETS TO BUY WITH GREAT PRIZES

PAINTING EXHIBITION

Please contact Stuart for further information before bringing your
painting to the National

See the "Take part in a painting Exhibition" page 1

All monies raised will go to a charity, except from regalia

STUART WOOD, REGALIA OFFICER

CHAIRMAN'S CHAT



As I write this in early January, the recession biting, strikes causing chaos in the transport, postal and health services sectors in the UK and, to some extent, their effects to the services on the island. On a positive note the winter weather has been kind to us all so far with milder temperatures than normal for this time of year which has helped cushion the energy bills a little so far. We are still mindful of a Beast from the East 2 threat until February is out.

As we look forward to getting out and about in our motorhome, why not consider joining some of our great "value for money" Club Rallies coming up this year and meet friends both new and old. They can be found on page 12.

On the island here, we get a brand new ship "ManxMan" which is currently making its way from the ship yard in South Korea to the island, to enter service in time for the TT in June and the celebrations for the 150 years of the Isle of Man Steam Railway and 130 years of the Manx Electric Railway still using some of the original stock, along with our local Isle of Man Yacht Club hosting the National Class 18 championships all in July. I understand that the ship will make it even easier to get motorhomes across.

Preparations for the ASOC National Rally are well under way, hopefully, we will see many of you at Newark Showground this year over the May Bank Holiday Weekend.

The team will look forward so seeing you over the many rallies we have on this year across the country.

The committee and myself are always looking at how we can improve the club and provide information and activities that you would like to see or partake in. Let me know by dropping me an email to the chairman's box.

Until next month.

Steve, Chairman

NATIONAL RALLY AND AGM



PLEASE BRING ANY BOTTLES TO DONATE TO THE TOMBOLA



FRIDAY NIGHT AT THE NATIONAL

Scott David will be entertaining us



LPG underslung tanks

A member kindly compiled this little table, which may help to interpret the LEDs. But it depends upon the tank being set at the correct angle. But please remember this is only a guide and maybe different for your tank.



Red LED only (not normally on):	say 4 litres left
1 green LED: 2 litres (plus reserve of 4)	= 6 litres left
2 green LED: 4 litres (plus reserve of 4)	= 8 litres left
3 green LED: 6 litres (plus reserve of 4)	= 10 litres left
4 green LED: 8 litres (plus reserve of 4)	= 12 litres left
5 green LED: 10 litres (plus reserve of 4)	= 14 litres left
6 green LED: 12 litres (plus reserve of 4)	= 16 litres left
7 green LED: 14 litres (plus reserve of 4)	= 18 litres left
8 green LED: 16 litres (plus reserve of 4)	= 20 litres left

online booking in the member area

THE HUB

SAD NEWS

It is with sadness that we have to report that two of our early members have died during the course of 2022. *Audrey Crouch and Greta Dunn.*

Janis and Mike wish everyone a Happy and Healthy New Year, and hope to see you on a field somewhere. *Janis and Mike Wood 4201.*

Headlight deflectors

The question has been asked, where do you find the information for the position of the deflectors on your motorhome when you need to use them when travelling into Europe. Let the editor know. *editor@asoc.uk.com*

Santa abseils down Cheddar Gorge

On Saturday 3rd of December we headed off to Cheddar Gorge hopefully to meet up with Brenda Jarvis and Dianne Leader and to give some moral support to Dianne who was doing a charity abseil in aid of St. Margaret's Hospice.

The road through Cheddar gorge is steep and twisting once you leave the shops and eating places behind. There are high sheer rock faces and loose shale on both side of the road.

We pushed onwards and upwards and as we rounded each bend we expected to see the group of fundraisers but nothing.

We began to question whether we had the right date and were on the verge of turning back when we found a group of

Santa's, red suits, hats and beards all gathered at the foot of the cliff. One Santa waved at us so we knew we had found Dianne at last.

Although it was a bitter cold day they had a good turnout of fundraising absailers and supporters. We watched several descend, some with confidence, although some harboured second thoughts once their feet left the safety of the cliff top.

Then came Dianne's turn.

Linda filmed it on her phone. Dianne waved to us from the cliff top, turned her back to us and prepared for the descent. Then it was lights, camera action and away she goes and that is exactly what happened next.

The first few steps went well before her foot slipped on the damp rock face and left her swinging like a pendulum in mid air.

Held by the ropes, Dianne quickly regained her footing and completed the decent in a more dignified manner and landed on her feet.

I think we had been more nervous than she was. In total: 82 Santas took part and raised over £20,000.

Dianne's personal aim was to raise £350: £10 for each of the 35 years she has worked there.

To date she has raise over £530 and thanks all those who sponsored her.

What can we say other than "well done" to Dianne and all the other participants.

Brian and Linda Ellis 2360

TECH TALK with Dennis

Caring for Batteries

John Calf was puzzled by the comments in Tech News for December and contacted John Morris, our Editor...

"Dear Editor,

I was a bit perplexed with the article under 'TECH with Dennis' on page 6 of the December issue of ASOC News, in particular the part Batteries (2) which gives the advice " Zig chargers are not designed for continuous use".

I currently own a 2005 AutoSleeper Symbol, the latest in a line of Symbols, fitted with a Zig X-7 Charger & Power Supply Unit, and I refer to the Owner's Manual supplied with the motorhome.

" The X-7 is a fully automatic battery charger. Connected to a six cell lead acid battery with a nominal voltage of 13.8 volts, the unit will charge and recharge the battery by raising the terminal voltage to equal that of the output of the battery charger. As the battery voltage increases, the input current from the battery charger automatically reduces until it ceases to flow. This provides fast and efficient battery charging and eliminates the possibility of overcharging, unless the battery is at fault. "

To my way of thinking, this means that when I am on a site for a week, a month or three months in Spain, and connected to mains voltage, I do not have to switch the Zig unit off at any time, as indicated in the ASOC News.

In all my motorhoming years, I have always regarded the Zig charger as a 'fit and forget' fixture of the motorhome, and I have never switched it off as recommended in the TECH article. I do not see the difference between having the motorhome standing on my drive or pitched on a site. The only time I touch the Zig is to change from engine to leisure battery periodically."

My reply...

Hello John. Thank you so much for your interesting comments. I was quoting from an earlier contribution in 2011 by Harry Emblen in which he says that his advice comes from "the very helpful technical staff at Zig". Your handbook appears to contradict this, so I would suggest a quick call to Zig for clarification. I would be grateful to hear their response, which I will publish in a future "News". Hope this clarifies things from this end.

Eventually, John got a reply from the Zig suppliers...

"I have finally received a reply from Apuljack Electronics re the Zig X7 Charger, and I am forwarding it for your information.

It appears to support my belief that the Zig can be left alone to do it's job. The only attention required is to periodically switch between the engine battery and the leisure battery to keep both fully charged.

Thanks for your interest and I think we can put the matter to rest. If you wish to publish any of this information, please do so."

*“Good Afternoon John,
I can confirm that the Zig X7 is indeed an intelligent charging unit, that can be left on indefinitely without risk, as it manages its terminal voltage based on the leisure battery voltage. It is probable that Dennis’s source was referring to allowing the unit a chance to cool down/reset which is certainly advisable to do at regular periods.*

Kind Regards, Ross

*Apuljack Electronics Limited www.apuljackelectronics.co.uk 01278 588 922
Unit 11A, Mill Batch Farm, East Brent, Somerset TA9 4JN”*

DD Footnotes...

1. It is interesting to see Appuljack Electronics final comment about “allowing the unit a chance to cool down/reset periodically which is certainly advisable to do at regular periods”. I don’t see how this advice is compatible with being able to leave it on indefinitely. One can leave it on indefinitely or it needs periodic cooling/reset cycles when it is turned off. One cannot do both.
2. On the other hand, as the charger brings the battery to full charge, the energy being delivered to the battery will fall and the charger will not be working as hard as it did when it was charging or boosting your battery - it will run cooler like this, so why would it need time to “cool down/reset”? For my money, putting the EHU on a plug-in timer so it charges, say every other day, or only charges overnight (on a cheaper tariff) would comply with the above advice from the supplier.
3. Please remember, this advice from Appuljack Electronics relates to the ZIG X7 charger only. I cannot vouch that older versions of ZIG chargers will support continuous year-round charging and provision of a timer would be the way forward with older models .

Mercedes have issued a safety recall for Sprinter vans (non-current models) which need the airbags changing. A chemical change has taken place that may result (in the event of a collision) in the airbag mechanism bursting and deflating causing injury from flying debris and the deflated airbag providing no protection as intended. Pretty serious stuff.

If you have not received a letter from Mercedes yet, contact your Servicing Dealer and ask if your vehicle is included in this recall. Alternatively, go to Mercedes by following this link, <https://www.mercedes-benz.co.uk/passengercars/being-an-owner/total-recall/start.module.html> where you can enter your VIN and check if you are affected. Of course, no charges are made for this replacement work.

“Free to Good Home” Fiamma Carry-Bike, 3 rail.

Removed from AutoSleeper Symbol. No body mountings.

Collection only. Bradford, West Yorkshire Tel. 07443 933554.

Email jmcalf@gmail.com. John Calf 7965

Replacement water heater in Executive

Rose Hall (11563) enquires

“We have an Executive with a now inoperative Carver Water Heater. I understand that the Propex Malaga with adapter plate is a replacement. Has anyone undertaken this and be able to offer any advice. There is good access from inside the camper, although the water filler point is 5cm from the Carver unit, there is ample room the other side.



2023 National Rally Tech input

This will not happen this year. As most of you will know, there remains a vacancy on the committee for a Technical Officer (*Chairman, Technical Group*). Since my tenure ended in April last, nobody has yet come forward and offered to fill this vacancy. As a consequence, I do not believe that it has been possible to arrange for the provision of the Friday morning “tech table” and afternoon Technical Open Forum.

Previously, the provision of this part of the National Rally has been problematic due to the running of the event over a Bank Holiday. Guests who are asked to attend to provide and support the technical input often find it difficult to attend, as family demands at a holiday weekend obviously take precedence. Guests are asked to attend, without payment of any kind. I am very grateful for the support given in the past, but due to the holiday weekend issue, it has previously resulted in last minute cancellations and early departures from the event.

Normally by now, arrangements for guests are well advanced. Suppliers and technical experts booked and supporting equipment requested. None of this has been possible this year.

Service Centre contact details

Contact information on the Auto-Sleepers website seems to have been restricted to the use of a contact form for any enquiries to the Service Centre. Please honour their preference in this matter as I understand a lot of their time can be used up responding to telephone calls for what turn-out to be non-urgent enquiries. An alternative route is here...technical.service@auto-sleepers.co.uk

**MENS & LADIES SHOWER
PROOF JACKET WITH
INNER FLEECE**

£32.00 + p&p £4.95



025 MENS: navy or royal
blue M, L, XL XXL XXXL

026 LADIES: navy or royal
blue 14, 16, 18 20

The Club shop has a range of items. They are available from the Regalia Officer

Payment required is by bank transfer, email your order to regalia@asoc.uk.com

We will confirm your purchase together with our bank details, and a reference number to be used when paying by bank transfer. It is important to use the reference number when transferring as we require it to deliver the order.

ORDER FORMS TO FILL AND THEN EMAIL
available at

<https://www.asoc.uk.com/clubshop.html>

024 BODYWARMER
£24.00 + p&p £4.95



navy or black
M, L, XL, XXL, XXXL

MENS & LADIES FLEECE
£21.00 + p&p 4.95

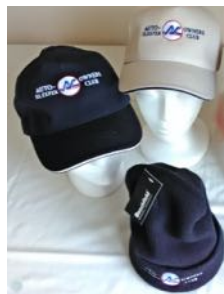


001 MENS: navy blue, royal
blue, seal grey
S, M, L, XL, XXL, XXXL

002 LADIES: navy blue,
royal blue, classic red
14, 16, 18, 20

009 WOOL SKI HAT
£6.50 + p&p £3.35

010 BASEBALL CAP
£10.00 + p&p £2.65



ski hat black with ASOC
badge
baseball cap with ASOC
badge cream or blue,

POLO SHIRT
£13.50 + p&p £3.35



008 with little man motif
dark or light blue
M, L, XL, XXL, XXXL

021 VAN NAME STICKER
plus 60p per letter
+ p&p £1.25



014 LANYARD
£2.50 + p&p £2.00



013 LITTLE MAN STICKER
£3.25 + p&p £2.00



4" high, available in purple, silver, red, blue, green and black

PITCH RESERVATION BOARD



019 without vehicle registration
£3.50 + p&p £2.65

020 with vehicle registration
£6.50 + p&p £2.65

015 ASOC GRILLE BADGE
£14.00 + p&p £2.00



with fixings (fits all vans)

TEE SHIRT

£8.50 + p&p £3.35

004 with little man motif
pink, dark or light blue
S, M, L, XL

ASOC

NATIONAL RALLY & AGM

THURSDAY 27 APRIL - MONDAY 1 MAY 2023
NEWARK SHOWGROUND

ORDER YOUR SHOP ITEMS FOR COLLECTION
AT THE NATIONAL RALLY

Save the postage and packing

Last day to order for collection at the National is
1 April 2023

023 HOODIE WITH ZIP
£23.00 + p&p £4.95

023A HOODIE WITHOUT ZIP
£10.00 + p&p £4.95



red, navy, royal blue,
black M, L, XL, XXL, XXXL

SWEAT SHIRT
£16.50 + p&p £3.35



005 with ASOC badge
red, light or dark blue

006 with little man motif
light or dark blue
S, M, L, XL

012 BUDDY BEAR
£9.50 + p&p £3.35



with ASOC tee shirt

Coming to the National Rally?

bookings are open now for the National & AGM

booking forms are available on the website member area

COLLECT YOUR ITEMS AT THE NATIONAL
order forms on the shop page of the website

Full event list is available on the website www.asoc.uk.com/eventinfo.html

20 - 24 March 2023 (4 nights)

Whitemead Forest Park, Parkend, Gloucestershire

Parkend. Near Lydney. Gloucestershire GL15 4LA

Rally marshals: John and Jackie Moss. Janet and Paul Nash

Site fees: £48+£4 rally fee

Please send rally slips and cheques for £52 payable to:

J Moss, 34 Cocksparrow Street, Warwick, CV34 4ED

Telephone: 01926 497309. *Mobile:* 07508 200336

Please send SAE or CLEAR. Email address for confirmation

We shall be sited on the terraces area, known as the Meadows, which has hard standing with hookups we hope all facilities will be available.

Directions: Drive into Lydney town centre from Gloucester. Turn right at the Swan pub before the level crossing signposted Parkend follow the road to Parkend station and turn left at the Fountain Pub, at the top of the road turn left, site is on the left approx 100 yards.

DO NOT ARRIVE BEFORE 2.00 pm. (14.00 hours)

21 - 23 April 2023

The final Peterborough Motorhome & Campervan Show

Marshals: Yvonne and Stuart Wood.

Emergency telephone: 07799 591550

Arrive Thursday £80.00 minus ASOC discount.

Booking for Saturday night entertainment must be made and paid to Warners on their booking form.

Use the booking form from MMM, or online with Warners, Mark the form ASOC CLUB and note the special club fees.

You must also send a rally slip to Stuart Wood with your rally fee, Couples £3.00, Singles £2.00.

Applications closing date is 10th April, if you want to rally with the club you must return the form before this date.

SAE or a legible email address for confirmation.

Cheques payable to:

S. Wood, 26 Burton Acres Way, Highburton, Huddersfield, HD8 0RF.

Please collect club rally information from the marshal before parking where directed.

27 April - 1 May 2023

National Rally & AGM, Newark Showground

Pitch fee includes electric and access to all the pavilions and the entertainment on Friday and Saturday evenings. Book online from the member area of the website.

9 - 14 May 2023 Kings Down Tail, Near Sidmouth, Devon

MORE INFORMATION COMING SHORTLY

16 - 19 May 2023 (3 nights)

Hopley's Family Camping

Cleobury Road, Bewdley DY12 2Q

Rally Marshals: Arthur and Cheryl Allen

Site fees: £70 + Rally fee: £5.00.

Enquires and Applications: Please send form and cheque to:

Arthur Allen c/o Clows Top Post Office, Clows Top, Kidderminster, DY14 9HL
or email your form to arthur.allen2427@btinternet.com and payment to PayPal using the same email address, please use reference Hopley with your surname.

The site is Hopley's Cleobury Rd, Bewdley DY12 2Q with on site Farm Shop, café, showers and fishing pool. The pitches have electric hook-up and it is on the outskirts of the Georgian riverside town of Bewdley, just off the A456 on the Bewdley bypass

There is a bus stop at the site entrance to Bewdley where you can change to Ludlow, which has 11th century castle and Kidderminster, the other direction is Tenbury Wells and the City of Worcester. Local attractions, Bewdley Town Centre with cafes, restaurants and bars, walks along the river Severn and Severn Valley Railway – train to Bridgnorth and Kidderminster, West Midland Safari Park and Wyre Forest Centre with café and walks. Wharton Park Golf Course is within walking distance from the site.

limited to 30 pitches.

6 June – 16 June 2023 (10 nights)

Camping Les Deux Vallées, Vézac, Dordogne, France

Rally Marshals: Chris and Peter Brown, Liz Irvin

Rally Fee: £25.00 this is not refundable if offered a place

Enquiries and Applications: pcb7ty@btinternet.com 07771 827711

Site and Fees: The site fee at €20 per night is €200, this includes electricity and one dog (additional dogs are charged at circa €2 per night). Local taxes will have to be paid on arrival – this year totalling €1.10 per adult per night.

A 25% (€50) deposit has to be paid to the site and will need to be with us by 25th April. ►

We will require the balance of the site fee by 30 May to pay to the site on arrival.

The site has large grass pitches, swimming pool, restaurant/bar and is a 15 min walk from Beynac with its Chateau and restaurants and 7 miles from the town of Sarlat.

Payment details: This has to be made by bank transfer, we will not have the facility to process cheques or accept cards.

Account details will be passed to members at the appropriate time.

Limit: 25 vans

23 - 28 June 2023 (5 nights)

Harrogate Rally at the Showground Caravan Park

Marshals: Yvonne and Stuart Wood.

Emergency telephone: 07799 591550.

Site fee: £135 for 5 nights.

Rally fee: couples £3.00, singles £2.00.

Application form and cheques payable to:

S. Wood, 26 Burton Acres Way, Highburton, Huddersfield, HD8 0RF

Telephone: 01484 604133,

SAE or legible Email for confirmation.

Pitches are hard standing with electric. Heated toilets, showers and laundry room, wash up. Free WiFi.

Farm shop and café next door, with discount. Sainsburys 5 minute walk, bus 5 minute walk, pub 5 minute walk. Buses to Harrogate, Knaresborough, Wetherby, and Leeds. You can bus, cycle or walk into Harrogate.

Harrogate has the famous Bettys tea rooms and the Valley gardens, and, of course, Weatherspoons in the old pump Room.

Directions: On A661 Wetherby to Harrogate Road, turn at Sainsburys. HG2 8NZ
Please do not arrive before 13.30.

Two-site Scottish Rally (7 nights)

16 - 19 August Kirkcudbright

19 - 22 August Hoddom

Kirkcudbright has a group 'Kirkcudbright Summer Festivities' who for many years have hosted a full programme of weekly events during July and August, one of which has been a 'Scottish Night' in the Harbour Square on Thursdays. There will most likely be other interesting events on other days.

MORE INFORMATION COMING SHORTLY

RALLY INFORMATION - Points to remember

Marshals should let the Rally Coordinator know when rallies are fully booked.

Always carry your ASOC membership card when attending rallies.

Not able to attend a rally you have booked, please inform the marshal as others may want to attend. Inform the marshal if you plan to bring a car, tent or trailer to a rally.

All rallies start at 12 noon unless otherwise stated in the rally information.