

ASOC News

382 JULY 2020



IMPORTANT NOTE

Contributions from members are published in good faith, and they will be interesting and useful. All care is taken to ensure accuracy but no modification or suggestion has been tested by the Club or editor.

No warranties are expressed or implied nor indemnities given. You try them at your own risk.

Advertisements are free, but donations to club funds are appreciated. Publication of any item cannot be guaranteed.

SUPPLIER DISCOUNTS

Available on the website are companies who offer members a discount on goods and services they supply.

You must present your ASOC membership card at the time of order or arrival. You will not qualify for a discount after work has commenced.

PUBLICATION ITEMS

The editor reserves the right to edit or omit any item.

The opinions, beliefs and viewpoints expressed by the contributors to ASOC News do not necessarily reflect those of the Club or editor. Add your name and membership number to any item.

Items appearing in any issue may be used by other publications, but acknowledge both the author and source.

Items should reach the editor by the tenth of the month.

17 Newbridge Gardens
Bath
BA1 3LT
editor@asoc.uk.com



News is the magazine of
AUTO-SLEEPER OWNERS' CLUB
A Company Limited by Guarantee

Registered Office
Orchard Works, Willersey,
Worcestershire WR12 7QF
Registered No: 4616969
www.asoc.uk.com

THIS MONTH

2 editor's view

3 when it's gone

4 fond memories

5 looking back

6 leisure battery replacement

8 let's visit

10 lockdown quiz

12 traveline

14 ASOC hub

15 caption competition

16 tech news

18 our last bit of freedom

20 picturesque Saint-Aignan

22 forthcoming club events

President Charles Trevelyan

Chairman Peter Brown 07771 827711 chairman@asoc.uk.com

Vice Chairman Steve Ryan vicechairman@asoc.uk.com

Secretary John Osland-Jones 01217 448065 secretary@asoc.uk.com

Treasurer John Geeson treasurer@asoc.uk.com

Rally Coordinator Neil Rogers 01325 954508 ncr@mypostoffice.co.uk

Technical Dennis Downie technical@asoc.uk.com

Club Shop Stuart Wood regalia@asoc.uk.com

Publications John Morris 07545 078905 editor@asoc.uk.com

Membership Secretary Jean Downie membershipsec@asoc.uk.com

Charities & Exhibitions Shelagh West charities@asoc.uk.com

Chair, National Rally Martin Ross 07901 771040 national@asoc.uk.com

SAD NEWS

Jeannette Jones

Its with great sadness that I write to let you know that Jeannette Jones passed away recently having been diagnosed with an inoperable tumour some eighteen months ago.

Jeannette joined the club with her husband Tecwyn and she loved the motorhoming life, carrying on after Tecwyn died.

It was Jeannette who initiated and for several years ran the extremely popular Whitemead rally, one year doing so only hours after returning from a long trip to India.

Chris and I met Jeannette on a rally in France and we developed an affinity, we were with her on a rally in Ireland when she was excitedly arranging for the new man in her life, Graham, to fly over and join her.

Graham and Jeanette left the club for a while but had very recently bought another Auto-Sleeper and re-joined. Jeannette was a remarkable and incredibly determined woman and she will be missed by all who knew her.

Peter Brown



COVER: [Peter Brown]

Season: all year. By Hafrsfjord, the monument Sverd i fjell (Swords in rock). This was where Harald Fairhair gathered Norway into one kingdom in 872. The monument consists of three swords that are fixed into the ground. They symbolise peace, unity and freedom. The hilts of the Viking swords are taken from swords found in different parts of the country. The monument is made by Fritz Røed (1928-2002), and was unveiled by King Olav in 1983.

editor's view

Welcome to July News

We hope all our members are staying safe and well.

You will have noticed most of this years rallies have been cancelled, but a few are hanging on to see what develops. We know campsites are looking to open this month.

Thank you to those members who have been sending items to News, please keep them coming.

The club shop has reopened for all the items you have needed to buy. Payment is by bank transfer at the moment, and all details can be found on the order form which can be downloaded from the website.

How have we all managed with the lockdown? Plenty of van cleaning, home decorating and gardening.

Being in that certain group, I managed to arrange a home food delivery slot after several weeks. All very new to us, especially when we are used to going out daily for the things you need. Our first delivery was very good, except we thought we had ordered 1kg of bananas, but it turned out we had only ordered one.

Someone else told me they had only one carrot delivered. I suppose when you are in the supermarket you can see the items on the shelf, the size you want and not bother to check the weights. Not so with online, only a picture of what you think you want.

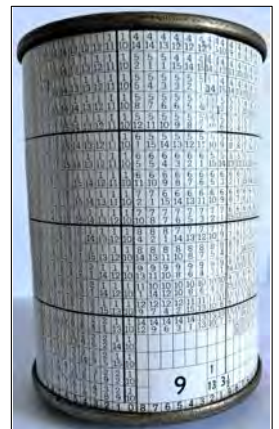
Last months competition

I thought my tenner would go back into my pocket, with no member coming up with the correct answer.

The object was a justification drum from a Monotype keyboard. If you put "Monotype keyboard pictures" in your browser, you can see how it was used.

Still feeling lucky my tenner will be safe for the the next object I have planned.

Meanwhile check out this month's caption competition.



WHEN IT'S GONE IT'S GONE just a few HI-VIS left



your last chance as these are being discontinued
Not just for your motorhome, but your car and bicycle

RESERVE YOURS NOW regalia@asoc.uk.com

quoting 011

only £9.50 each including postage and packing, order two and save £2.00

I've received an email from Pat Mayne, it's been a year since Dave passed away. Pat says that she absolutely loved being in ASOC and would have liked to be able to remain a member, but driving a motorhome long distances would not have suited her. She has fond memories of many club members and sends her regards to them all.

Peter Brown

FOND MEMORIES

Maybe people who were members in 2011 will remember these rallies

Our Rallying Year - 2011

With Christmas nearly upon us, our minds are drawn back to the great rallies we have done this year and the Rally Marshalls who manage to find some really interesting venues.

The first of our rallies, after the National of course, was Bentley Wild Fowl Park with the added attractions of a car museum and miniature railway with something to occupy us the whole time we were there. This was followed by Hurley on Thames with scenic walks and a bus into Henley.

After a cruise around the British Isles we then went to Abingdon, again on the Thames with buses and boats to Oxford. This was followed by St Ives in Cambridgeshire, the River Ouse this time.

After this we had a weekend at Ferry Meadows CC at Peterborough with our daughter and the grandchildren. Worth remembering to take your CC receipt to the Nene Valley Railway to get half price on their fares - bargain.

The following weekend we were off to the very popular Topsham Rally and it's festive week. Home for 2 days before we went to Faversham Rally with the hop festival weekend and bus trips (and trains) to local towns. We had a pleasant day at Whitstable and it's harbour.

After 5 days we were off to Brean Sands Unity, followed immediately by Dartmouth Little Cotton. Both great venues with local buses to venture about. After stopping off at Cheltenham on the way back home we were off to Towcester Race Course for the ACCEO Rally (just like our National with evening entertainment and places to visit locally) and were blessed with the hottest weather yet (up to 32degC) a real bonus for early October.

So from June to early October we spent most weeks & weekends doing all these rallies with just enough time to get the washing, ironing & grass cutting done in between, so it's a big thanks to all the Rally Marshalls & their helpers in giving us such a busy & enjoyable Summer. May we take this opportunity to wish a merry Christmas to them & all our friends, old & new.

Pat & David Mayne

Pat had recently found this article that Dave had written quite a few years ago and we thought it would be nice to share it with members. Many will remember Dave was the editor of our magazine before me. [JM]

looking back.



1979 built on the Bedford CF 250 chassis



1979/80 Volkswagen LT28 Auto- Sleeper Model VX10

Leisure battery replacement in a Peugeot Auto-Sleeper Nuevo ES 2005

Rhys Beynon 7878

Once upon a time during the long lockdown I realised that my leisure battery which was installed some four years ago was not holding its charge. When replacing the previous battery (which had been replaced by the original owner) I realised he had avoided following the A-S method requiring lifting the drivers' seat to gain access to the battery. He had hammered down the lip on the battery tray so that the battery could be dragged backwards without removing the seat at all. Following his method



I ordered an identical battery (Platinum 685L) from the web. When it arrived and attempted to fit it I found it was about 10mm higher than the original and it would not fit under the seat frame. The supplier responded to my comment that the battery supplied was a Platinum S685 which had different dimensions from the one ordered, and that the original 685L was no longer made by the manufacturer!

I had three options; return the battery for a refund, find another battery with the same dimensions as the 685L or remove the driver's seat.

Deciding to bite the bullet, and search the web for advice on lifting the driver's seat. The main thing I found out, the seat was very heavy and, to respect social distancing, it would have to be a one "old" man job!

Removing the decorative fabric covered panels around the battery required a Phillips screwdriver although one panel on the hand brake side seemed to have been rivetted. This rivet did not need to be removed, but it would probably have been probably easier had it just been a screw.

By sliding the seat forward/backwards I could see that, at the front of the frame, were two 13mm bolts held by nuts underneath, but were accessible by a 13mm socket. At the rear of the frame there were two bolts requiring an Allen key.

The bolt nearer the driver's door was fully removed, but the other one, nearest the middle of the van, was only slackened. When the Allen bolts were totally removed, allowed the seat to be rotated on the slackened bolt. This meant the weight of the seat was no longer a factor which required an extra pair of strong arms.

The plate on which the battery would fit was clearly accessible. Lowering the S685 battery required a little juggling to lower it onto the plate. During the "juggling" I was aware that the battery terminals were near bare metal, so did not remove the supplied green plastic terminal covers until ready to clamp on the terminals.

The new battery, being a slightly different shape, meant the brackets were not able to hold the battery quite as securely. Having that factor in mind perhaps choosing a different battery might have been wiser, it would certainly have been a quicker job!

DEALER AND SUPPLIER DISCOUNTS

The club has a list of Suppliers & Dealers who have offered an incentive to members. The full list of available discounts can be found on the website.

www.asoc.uk.com/download/deals.pdf

Members are required to produce their current membership card and must advise the dealer in advance before any work or purchases are agreed.

photos: John Geeson

Le BLOCKHAUS d'Eperleques



slave transport train



V1 launch pad



V1 missile

www.leblockhaus.com
62910 Eperleques, Pas-de-Calais.
Off D300, NW St-Omer

Covid 19 Shutdown quiz to exercise the Brain

Brian Ellis

FOUR OF A KIND

In this section, the 5 clues give a word. The only thing in common is that each word contains "4" of a letter, e.g Something bubbly and turbulent... EFFERVESCENT....

Four "E"s

- 1 Someone who will kill for money (8) _ _ _ _ _ _ _ _
- 2 This special box of chocolates may be a "clue" to this word,
it's a kind of magic (6) _ _ _ _ _ _
- 3 He wanted to phone home (16) _ _ _ _ _ _ _ _ _ _ _ _ _ _ _ _
- 4 An Indian prince but not the American kind (8) _ _ _ _ _ _ _ _
- 5 A type of tent, but it was home to some wandering people (6) _ _ _ _ _ _
- 6 The five (x 4) letters make a romantic gift, perhaps. _ _ _ _ _
- 7 Put a word in the brackets that means the same as the word on either side:
SHRINK () AGREEMENT

BODY PARTS

- 8 Name at least eight parts of the body that have just three letters in them.
They must be proper parts bum, wax, lap fat etc. Do not count

ANAGRAMS

- 9 Six Breeds of dogs:
 - a LAG BEE
 - b LOOPED
 - c ALIAS ANT
 - d ARAB LORD
 - e HUNGRY DOE
 - f REWRITE LOT
- 10 Six kitchen items:
 - a IF KEN
 - b IS EVE
 - c GARRET
 - d LEN BRED
 - e UP ATLAS
 - f CAN PAUSE

BRAIN BUSTERS

11 How many times do the clocks hour and minute hands cross each other in a twelve hour period ?

12 Can you find one English word that can be formed from all these letters
PNLLEEESSSS

13 Divide 30 by half add 10 and what do you get?

14 If 3 cats catch 3 mice in 3 minutes, how many cats would be needed to catch 100 mice in 100 minutes ?

15 Do this in your head , do not write anything down but the answer and how many seconds it took to achieve it : Take 1,000 and add 40 to it. Now add another 1,000 now add 30 and another 1,000 now add 20.

Now add another 1,000. Now add 10 What is the total ?

16 Two fathers and two sons went fishing one day. They caught only three fish. One father said "that is enough for all of us, we will have one each" . How can this be possible

17 Mother won £ 24.00 on the bingo and decided to give it to her children as a little extra pocket money.

To Mary, the eldest daughter, she gave half the money because she always helped with house work.

To David she gave one third of the £24.00 because he did his share when he wasn't off playing with his mates.

To Jane, she gave just one eighth of the £24.00 (enough said).

But this caused arguments , so mother decided to have the money back and spend it on herself instead . Mary graciously gave back £12.00 . David was a bit put out but gave back £ 8.00.

After a good deal of argument and foot stamping, Jane gave back £3.00.

When mom counted it they had only given back £ 23.00 Who has the other £1.00?

A Mary kept part of her share

B David didn't give his full share back

C Jane was practicing to be a pub landlady

D Mother couldn't add up properly

E Tax on winnings deducted at source

F There was only £ 23 .00 to begin with

traveline

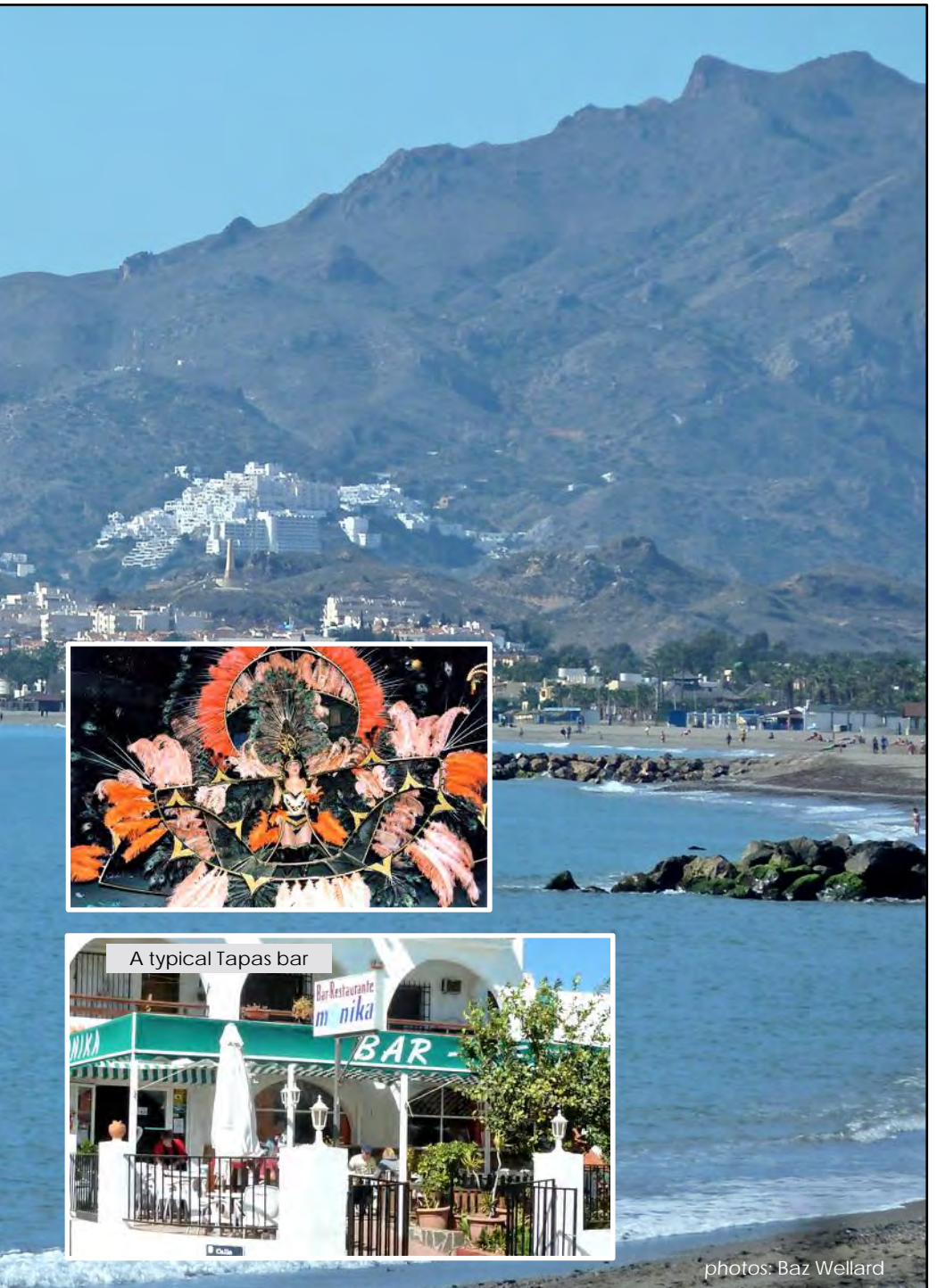
Mojacar Pueblo, Spain

Mojácar is a town in southeast Spain. It's known for its whitewashed Moorish old town and Mediterranean beaches like Palmeral and Cueva del Lobo. The hilltop Plaza Nueva has views of the Valley of the Pyramids.

<https://www.andalucia.com/villages/mojacar/home.htm>



Moorish Architecture



A typical Tapas bar

photos: Baz Wellard

ASOC

HUB

asocnews@asoc.uk.com

Find LPG

There has been talk about LPG being difficult to find to fill underslung tanks. If members have found places to fill which may not be well known, perhaps we can compile a list? A couple of websites you may find useful.

<https://www.mylpg.eu>

<https://www.fillpg.co.uk>



Auto-Sleepers Service Centre is open for business and would be pleased to begin taking calls. They are in the process of contacting customers who have had appointments cancelled, but this will take a little time as they are not able to operate at full capacity.

The service centre telephone number is 01386 853511

<https://www.auto-sleepers.com/owners/servicing-and-care>

<https://www.caravanclub.co.uk/uk-holidays/reopening-our-campsites/>

SUPPLIER DISCOUNTS

what you need to know

We have many companies who offer members a discount on the goods and services they supply.

To claim your discount, you must present your ASOC membership card at the time of order or arrival.

You will not qualify for the discount by presenting your membership card after work has commenced.

CAPTION COMPETITION

win a tenner



copyright: Sandra Snow

send your caption entry together with your name membership number and email address or postal address to

editor@asoc.uk.com or to the editors address
(this can be found on the inside front cover)

we will contact the winner to send the tenner by cheque or bank transfer

closing date for entries 10 July 2020

Motorhome battery care in storage

I was pondering about the recent discussions about storing your motorhome with access to electric hook-up and how modern chargers will happily maintain your battery when connected to mains-hook-up permanently at home. This is not the case for all chargers and for the older style Zig chargers, they should not be left permanently charging your battery. I had a trawl through the 'Hints and Tips' section on the website and found these entries from 2011 which I think are worth reading...

Batteries (2) - Charging: Talking with the very helpful technical staff at Zig electronics they offer the following advice "Zig chargers are not designed for continuous use, recommendation is to charge for a 24 hour period once a week".

Harry Emblen Feb 2011

Batteries (3) - Charging: Two suggestions for mains charging & not overcharging batteries when in storage are:- use a 'domestic' 24 timer set to a few hours a day, or a '7-day' timer set one day's charge per week (or part day). Timers must be in a safe place away from the elements.

Baz Wellard Apr 2011

Batteries(4)-Charging: With the expense of fuel many of us are 'linking-up' rallies and if the sites are greenfield (i.e. no mains) it is not possible to top-up the leisure battery. Several members have expressed concern that their leisure battery runs down even though they've had a journey between sites - when they would have expected the battery to be fully charged.

This is true to a certain extent. However, if the fridge is switched on during the journey between rallies it can draw up to 8 amps! If you are desperate about your leisure battery's charge, and the fridge can stand the journey without defrosting, try switching the fridge off and utilise the extra current available for the leisure battery.

Baz Wellard Sep 2011

May we offer a big thank you for your Tech News article in the in the April ASOC magazine, entitled Peugeot Safety Recall, Boxer 111 2017.

As proud owners of a 2017 Boxer Kemerton XL, our vehicle fell into the recall which affected brake pipe fixings and if not bought to our attention, could have caused a serious accident. As your article rightly pointed out, Peugeot could only identify owners for recall by using DVLA information and if the V5 identifies the vehicle as a Kemerton Motor Caravan and not a Boxer 111, it may not be tracked. This is what happened to us and, thankfully, after contacting Peugeot, the recall has now been actioned and we can breathe a sigh of relief. Once again a big thank you.

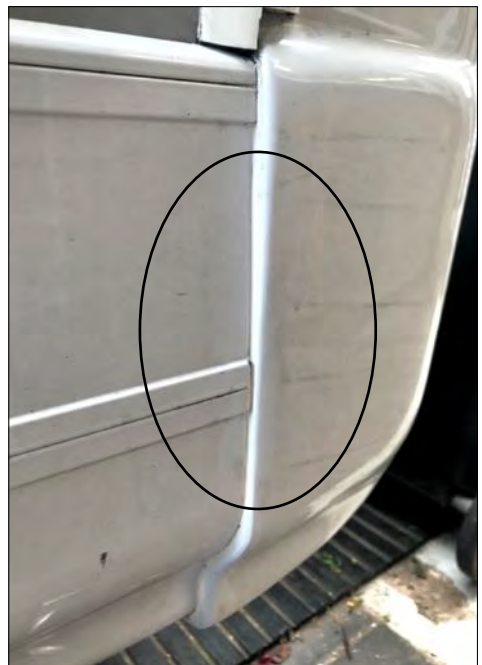
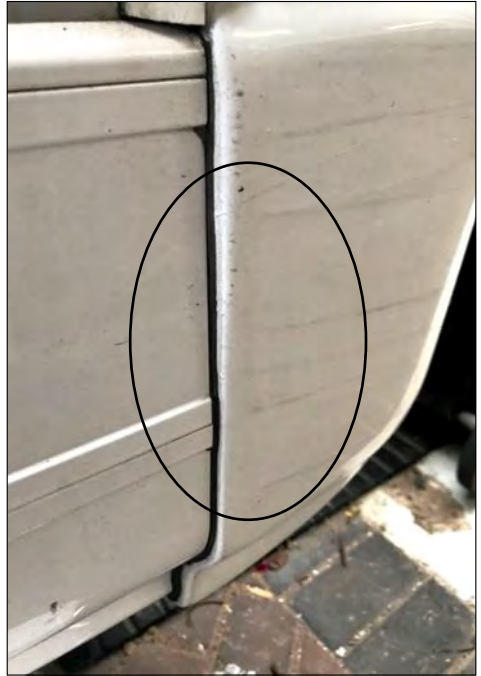
Frank Worsley and Felicity Allen

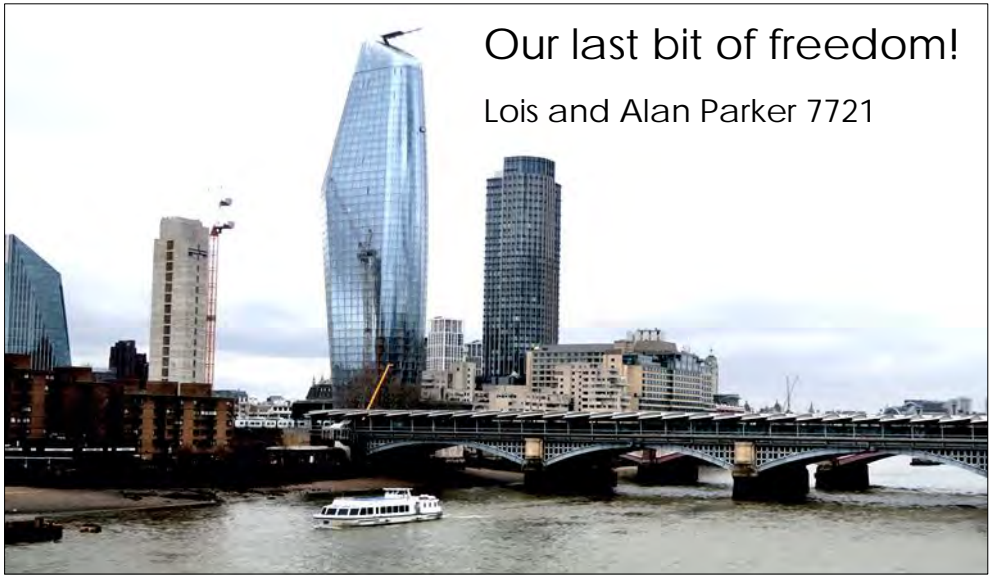
Cleaning discoloured sealant lines

I was very frustrated some years ago at the way the sealant along edges of doors, lockers and corners of my caravan (yes, I admit it, I was a caravanner!) got dirty and were impossible to return to their showroom state. I experimented a bit with several potential “cleaners” including WD40, but found that there was nothing more effective than White Spirit. I applied it with a toothbrush, scrubbed it for a few seconds and wiped it off straight away with a Terry cloth and like magic, the top surface of dirt came off.

What I observed was that the white spirit softened the surface of the sealant and the dirt just wiped away. A follow-up wipe with a clean cloth removed any drips from the paintwork without damage. I reserve this method for once a year, it is very effective, but constant application of white spirit or other solvents may not be good, long term, for the sealant. I stress, only the top surface of the dirty sealant is affected by the white spirit and after the surface is wiped over with a cloth, any residue evaporates quite quickly. I would follow through in about an hour with your normal polish. Now, having told you this, please don't go inspecting my Stanton. I am of the school that likes to see a gleaming motorhome, but finds life is just too short for cleaning them!

Dennis





Our last bit of freedom!

Lois and Alan Parker 7721

Little did we know as we set off in our Campervan on March 3rd 2020, that this would be our last trip out for quite some time. We had been given a voucher for Christmas for a Tour and Afternoon Tea at the Albert Hall and had booked the date for it sometime earlier.

We set off from our home in Leicestershire, in Wanda, our Auto-Sleeper Warwick XL, and headed down the motorways to London. Our pitch was already booked at Abbey Wood Caravan and Motorhome Club site, and we arrived there mid-afternoon, after negotiating the roadworks just outside the entrance. We were given a good welcome as usual and we were soon settled onto our pitch ready for a few days in the capital.

The next morning, we walked down to Abbey Wood Station and caught the train into Canon Street, a journey of about 30 mins. We started our sightseeing in the magnificent St Paul's Cathedral, using the information on the headphones to find our way around. Coffee in the crypt

was a must before we left to stroll over the Millennium Bridge and take lots of photos. Unfortunately, the weather was not at its best – rather cloudy and wet at times.

We arrived at the Albert Hall a little early for our Tour, so wandered around the outside of the building noticing the various inscriptions on the stonework. As we did so, we realised that large groups of children were making their way inside the hall – several hundred of them in fact! We were to find out later what they were doing there.

There were about 12 of us doing the Tour, which was very interesting, despite the fact that we could not go into all areas as the children were rehearsing for a concert that evening.

We were able to sit in the boxes and listen to them though. We learnt a lot about Victoria and Albert from our Tour guide and enjoyed seeing the room where the Royal party were received before they entered the Royal box. Then we were shown upstairs to the Tea Room where we

enjoyed a splendid afternoon tea with all the trimmings.



tea at the Albert Hall

We left Abbey Wood the next morning, after a very pleasant few days in London.

It was obvious whilst we were in London that people were starting to be cautious, and frequent hand washing was being encouraged. We had a small supply of Hand Gel with us, but we were unable to obtain anymore. We certainly didn't realise we were at the very beginning of a Corona Virus Pandemic, which would keep us in our homes for many months, with Wanda looking rather forlorn on the drive!



St Pauls

The next day we travelled by train again to London Bridge, and walked around Westminster. There were still many tourists from all over the world milling around the Houses of Parliament. We set off down Birdcage Walk, and along by St James Park to The Churchill War Rooms, underneath the Treasury building. This is a fascinating museum, and we spent most of the day looking around the subterranean offices and bedrooms where the Cabinet worked and lived during the War years. There is also now a huge Churchill Museum which is well worth seeing; it's lucky that our tickets allow us to return for another visit.

picturesque Saint-Aignan

Saint-Aignan or Saint-Aignan-sur-Cher is a commune in the Loir-et-Cher department of central France



St-Aignan Cathedral

The bridge over R Cher, separated Vichy France from Occupied France. the round arch was destroyed by the Nazi's and rebuilt after the war. there remains bad feeling with some of the older residents.





Grand Hotel
St-Aignan



Chateau
St-Aignan

ASOC EVENTS

Neil C. Rogers, Rally Coordinator

5 Emerson Court,
Carmel Road, North,
Darlington, Co.

Durham
DL3 8JB

Telephone or Fax 01325 954508

Email ncr@mypostoffice.co.uk

CLUB EVENTS

Applications for rallies

We would like to remind all rallying Club members that you may only apply for rallies by post using the Club rally slip. Under no circumstances will rally marshals accept bookings by telephone.

Points to remember

Marshals should let the rally coordinator know when their rallies are fully booked.

Always carry your ASOC membership card when attending rallies. Inform the marshal if you plan to bring a car, tent or trailer to a rally.

All rallies start at 12 noon unless otherwise stated in the rally information.

Running a rally

If you would like to run a rally, contact the rally coordinator for a "Guide for Rally Marshals". When a date and venue is chosen you will receive the "Rules for Rally Marshals" and will be asked to sign a marshal's declaration which should be returned to the rally coordinator.

Assistance and advice is available from the rally coordinator or a committee member.

Important

All potential rally dates and venues must be checked with the rally coordinator, who will check that the club will be able to comply with regulatory and insurance requirements.

If you would like to assist a rally marshal to see what is involved in running a rally, or interested in the details of possible rally sites we have, please contact the rally coordinator.

In response to advice given by the UK Government in the circumstance of the Coronavirus Pandemic, the 2020 ASOC Rally Programme is suspended until further notice

Rallies in the programme are run by volunteer members (marshals), some have chosen to cancel their rallies.

THE RALLIES LISTED BELOW **CANCELLED**

3 - 5 July Prestwood Steam Fair

9 - 14 July 2020 (5 Nights)
Leon's Field, St Ives, Huntingdon, Cambs. PE27 5ER.

Thursday 16 to Monday 20 July (4 nights)
Beacon Park, Lichfield, Staffordshire.

25 -29th July (5 Nights) Stafford Boat Club, Maple Wood, Wildwood,Stafford, ST17 4SG.

16 - 20 August
Blue Lias, Warwickshire

12-13 September Multi site Scottish rally

14-20 September Unity Resort, Brean Sands, Somerset

6 - 10 November
Sedgemoor Carnival, Burnham on Sea, Somerset

RALLIES JULY 2020



Please Note: This rally will only take place if Government Guidelines allow. Please make sure that the marshal has full contact details in case the rally has to be cancelled at short notice.

18-23 July (5 nights)
Aberystwyth Rugby Club, Plascrug Ave. Aberystwyth,
Cerediion SY23 HL

Rally marshals: Pamela & Colin Maltby, Linda & Derek Day
Emergency Telephone for site use only 07798 702090

Site Fees: £50 (5 nights) Rally Fee: £5 Single £3

Please send rally slips to Colin Maltby,

Green Acres, Nantmel, Llandrindod Wells, LD1 6EW.

Please send a clear email address or SAE for confirmation.

We will be pitched on grass. No EHU, water, Elsan and grey water disposal. We will have the use of the Clubhouse, showers and toilets.



A level traffic free walk (10 -15 minutes) to the town centre, bus and train stations or seafront. Aberystwyth has a large variety of shops, cafes and restaurants. There is a steam train close by and also a cliff railway.

The Rugby Club will allow dogs on a short lead at all times.

No arrivals before 1200 please, depart by 1200 on the last day.

LIMIT 25 vans.

Please Note: This rally will only take place if Government Guidelines allow. Please make sure that the marshal has full contact details in case the rally has to be cancelled at short notice.

13-18 August 2020 (5 nights) Eskdale School, Whitby, North Yorks.

Rally Marshals: Liz Irvin, and Peter & Chris Brown.

Emergency Telephone 07711 271568 (Marshal's mobile) email lizirvin@outlook.com

Site Fees: £9.60 per night. Rally Fees £4.00 couples, £2.50 singles Total with rally slip £52.00 couples, £50.50 singles. We have the use of toilets and showers.

We can have the use of a room in the evening if distancing guidelines allow.

Arrivals after 12 noon on Thursday.

We will be using the playground and tennis courts.

No Electricity.

Booking slips and (cheques payable to Mrs E Irvin)

please send to Mrs E. Irvin, 43 School Lane, Kirk Ella, HULL, East Yorkshire.HU10 7NP.

Telephone 01482 658345 or mobile 07711 271568.

Please enclose SAE, or clear email address on slip for confirmation.

The Whitby Regatta has been cancelled this year.

The school is off the Scarborough Road. Buses stop at the school gates to Whitby. Come and explore Whitby's fascinating and historic streets and waterfront.

The site is close to the Whitby end of the Moor to Sea Cycle Route with links to Scarborough and Pickering. For walkers, the Cleveland Way coastal path is nearby. The Sainsbury's superstore is nearby on Stainsacre Lane.

Directions: From Scarborough on A171, on entering Whitby, after the 30mph sign, turn left into Eskdale Road after the lay-by, and the school entrance is on the left. From Guisborough or Pickering on A171, enter Whitby and continue on the Scarborough road, cross the new Esk Bridge and up the hill to the top, Stainsacre Lane. Entrance is off Eskdale Road before Sainsbury's store and petrol station. Post code YO22 4HS.

31 July – 2 August National Motorhome Show East of England Showground, Peterborough

The Club has no marshals for this Show.

13 – 17 August Great Western Show, Three Counties Showground, Malvern.

The Club has no marshals for this Show.

Please Note: This rally will only take place if Government Guidelines allow. Please make sure that the marshal has full contact details in case the rally has to be cancelled at short notice.

24-28 August 2020 (4 Nights)

St Cross Symondians Cricket Club Winchester SO23 9RT

Emergency Telephone 07754 761423 (Marshals Mobile)

Rally Marshals: Rita & John Tubb and Jean & John Gutsell.

Site Fees: £48.00. Rally Fee £5.00.

ONLY POSTAL APPLICATIONS ACCEPTED ➡

Please send your rally slip and a cheque for £53.00 payable to Rita Tubb together with your e-mail address or an SAE for confirmation and directions to:- Rita Tubb 70 Charnwood Crescent, Chandlers Ford, Hampshire SO53 5QL. Telephone: 023 8026 7294 Mobile 07754 761423. This is a Greenfield Site with a C.D.P and water point. Toilets and showers will not be available. The site is less than a mile from Winchester centre. There is a bus stop outside the site which will take you there, alternatively it is a nice walk along the river. Buses are available from Winchester Bus Station to Southampton, Romsey, Alresford, Alton, and various other destinations.

Places of interest: Alresford there is the Watercress Line (Steam train), Various National Trust places in the area, The Royal Green Jackets Museum, Whitchurch Silk Mill, Jane Austen's House, Winchester College tours, Intech Science Centre, Planetarium, Marwell Zoo, Winchester Cathedral or visit Southampton Docks to see the Ships in Port, or Visit the Isle of Wight.

Please do not arrive before 12 Noon. (Limit 30 Vans).

Please Note: This rally will only take place if Government Guidelines allow. Please make sure that the marshal has full contact details in case the rally has to be cancelled at short notice.

3-8 September 2020 (5nights)

South Lytchett Manor Caravan and Camping Park, Dorchester Road, Lytchett Minster, Poole, Dorset BH16 6JB.

Rally Marshalls: Mo & Mike Valentine. Mobile: 07745 522 335. Landline 023 9248 2818. Assisted by Martin Ross.

Site fee: £18.50 per night, includes electric, free wi-fi and TV hook-up. Total of 5 nights £92 per unit.

The Rally will be run according to Government Guidelines of Social Distancing, therefore we are unable to organize the Teas & Coffee occasions. You will be welcome to bring your own drink and socialize at a distance of 2 metres. If we are able to arrange for Fish & Chips we will do so.

Rally slips and cheques payable to: M Valentine. 11 Hamilton Close, Langstone, Havant PO9 1RP. Tel.No. 02392482818.

Enclose SAE or email address for confirmation. Latest receipt for booking 12th August.

South Lytchett Manor, is an award winning commercial site, 5 miles from Poole, Dorset. The bus stop is directly outside the entrance, from where you can catch a bus to Poole, Bournemouth, Dorchester, Lulworth Cove, Wareham.

Ralliers will have full access to all the site facilities, showers, toilets etc. Dogs welcome but must remain on a lead at all times.

Rally starts at 2pm, no arrivals please before and closes 11.00am on day of departure. Should the Government guidelines change, then we will make decisions accordingly.

24-28 September Seasons Finale Show, Lincoln Showground
The Club has no marshals for this Show

Wednesday 30th September (1200 hrs) to Monday 5th October (5 nights)
Ludlow Racecourse
Marshals: Peter and Chris Brown tel 07771 827711

This rally is part of the ACCEO annual National Rally. Toilets are available as is a large hall in which social activities and/or entertainment is planned for each evening. There will be professional entertainment on Friday evening from female vocalist Emily Abbiss and on Saturday evening from The Soundations Band. The ACCEO AGM is on Saturday afternoon and can be attended as an observer by any interested rallier. There are no electric hook-ups. ➡

There is a bus stop about ¾ mile from the camping area on the Shrewsbury to Ludlow route and its about a 2½ mile walk to the town centre.

There is no rally fee. The cost of the rally for Friday and Saturday nights is £35, there is no extra charge for the entertainment. Wednesday, Thursday and Sunday are optional nights at £12 each. Please indicate on the application form which nights you want to stay.

For this year you will be asked to pay on arrival at the rally so please don't send a cheque with your application.

As caravans attend this rally we are asked to advise if you wish a permanent tent awning to be erected and also the length of your vehicle, please include this information on your rally slip. ASOC has to present a collated booking form so can I please have your rally slip before 30th August.

Peter Brown, 5 Kenilworth Walk, Cheadle, Stoke on Trent, ST10 1WA. If you have any queries, telephone 07771 827711 or e-mail pcb7ty@btinternet.com.

If you wish confirmation of booking please include an email address.

Covid 19 Shutdown quiz ANSWERS

Four of a kind

- 1 Hired killer ... Assassin "S"
- 2 Black magic ... Voodoo "O"
- 3 ET ... Extraterrestrial "R"
- 4 Indian Prince ...maharaja "A"
- 5 A tent ... Teepee "E"
- 6 The five by 4 letters give a romantic gift, perhaps "A ROSE"
- 7 CONTRACT
- 8 body parts arm, ear, eye, gum, gut, hip, jaw, leg, rib, toe.

ANAGRAMS

9 Six Breeds of dogs

a BEAGLE, b POODLE, c ALSATIAN, d LABRADOR, e GREYHOUND, f ROTWEILER

10 Six kitchen items

a KNIFE, b SIEVE, c GRATER, d BLENDER, e SPATULA, f SAUCEPAN

BRAIN BUSTERS

11 (eleven) First time after the first hour and each hour thereafter

12 Sleeplessness

13 (Seventy) half into 30 goes 60 times plus 10

14 (Three) 3 mice in 3 minutes equals 1 mouse per minute ... so three could catch 100 in 100 minutes

15 4,100. There are 4 @ 1000's (4.000) plus 40+30+20+10 (= just 100) total = 4,100

16 A father (granddad) his son (a father) & his son (juni

17 D Mother still has it, she won £24 but her choice of percentages doesn't add up Half = 50 % £12 (Mary) one third = 33.333 % £8 (David) and one eighth = 12.50 % £3 (Jane) = £23 total percentage comes to only 95.83 % of £24 paid out which equals £23 leaving mother with £1.00



AUTO-SLEEPER OWNERS' CLUB RALLY APPLICATION FORM

Rally application form should reach the marshal 14 days before the event if possible
Enclose a SAE if confirmation by post is required of your booking

Date sent:	Rally name:		
MEMBER DETAILS			
First name:	Surname:	Membership No:	
First name:	Surname:		
Address:			
Address:			
Town/City:		Postcode:	
Telephone:		Mobile:	
Email:			
We require these details below of the person to contact in the event of an emergency			
Name:			
Telephone:		Mobile:	
Members guests (include children and their age)			
Name:			
Name:			
Name:			
Name:			Number of dogs:
MOTORHOME DETAILS			
Registration:	Length:	Model:	
ARRIVAL DETAILS			
Day:	am	pm	Evening
OTHER DETAILS			
Is this your first ASOC rally:	Electricity if available:	Evening meal if available:	
Do you intend to bring an additional car, trailer or tent:			
Any special requirements:			

PAYMENT

Including rally fee £

Number of nights

Full payment should be by cheque and made payable to the Rally Marshal
Details can be found on the event details