



[www.asoc.uk.com](http://www.asoc.uk.com)

# ***AUTO-SLEEPER OWNERS' CLUB***

*A Company Limited by Guarantee  
Registered Office: Orchard Works, Willersey, Nr. Broadway Worcs. WR12 7QF.  
Registered No: 4616969*



**Photo: Ricky Smith see February newsletter item**

## ***NEWSLETTER 330***

### ***March 2016***

## Committee Members

<b>President</b>	Charles Trevelyan		
<b>Chairman</b>	Jill Bertlin	Jbertlin@aol.com	01539 534500
<b>Secretary</b>	John Osland-Jones	oslandjones@aol.com	01217 448065
<b>Treasurer</b>	Peter Brown		07771 827711
<b>Vice-Chairman</b>	Peter Brown		07771 827711
<b>Rally Co-ordinator</b>	Neil Rogers	ncr@mypostoffice.co.uk	01325 374540
<b>Webmaster &amp; Chair, Tech Group</b>	Baz Wellard	webmaster@asoc.uk.com technical@asoc.uk.com	01329 231259
<b>Regalia Officer</b>	John Jones		01623 627903
<b>Newsletter Editor</b>	David Mayne	daveatasoc@virginmedia.com	07745 330304
<b>Membership Secretary</b>	Jill Bertlin	Jbertlin@aol.com	01539 534500
<b>Chairman, National Rally Sub Committee</b>	Keith Ross	Ross17@john-lewis.com	
<b>Minutes Secretary</b>	Gill Hopkins		01244 675180
<b>Committee Member</b>	Mike Valentine	Mikemo.valentine@talktalk.net	02392 482818
<b>Two Committee Member Vacancies</b>			

<b>Contents</b>		Help Required	8
Committee Details	2	Boondocking	9
From the Editor	3	ASOC our club	9/10
Chairman's chat	4	ACCEO national Rally Advert	10
Obit Derek Marshall	4	Rudeshein	10
National Rally Advert	5	Ebers Heaters	11
National Rally Tombola	5	TV on the Move	11/15
Photo Competition 2016	6	Battery or Dashboard	15
An Open Invite	7	VW T4 Gearbox	16
Completing Forms Note	7	Tech Group and Web	16/19
On reading the Feb Item	7/8	New Members	19
On line Petition	8	For Sale	20

The Editor reserves the right to edit or omit items. Advertisements for items to be sold or wanted by members are published free of charge, however, small donations to Club funds are appreciated and will be acknowledged. No guarantee can be given that any item will appear in the next, or any, issue of the newsletter. Cheques should be made payable to "Auto-Sleeper Owners Club" and not ASOC and send to the Editor.

**IMPORTANT:** Contributions from Members are published in good faith in the hope that they will prove interesting and useful. All reasonable care has been taken to ensure accuracy but no modification or suggestion has been tested by the Company, the Club or your Editor. Therefore no warranties are expressed or implied nor indemnities given. You try them out at your own risk.

## From the Editor



Hallo again, the committee has decided that in future, the electronic newsletter will also include a copy of the rally supplement. This is to accommodate those members who are likely to be away from home at the time when they need to book a rally. There will be the need to print off the supplement to make the application to the rally marshal so Internet café would seem to be the option. So if you wish to receive this electronically, contact me by email and include your membership number (which a few members forget to do!). If I get overwhelmed with numbers I may find this is not possible. At present there are only 10 members who get the electronic version and this is sent out after I receive my paper copy via the post. This can also be delayed if I am away at the time it is delivered. If you know that you will be away at the start of the month, you can plan ahead and arrange for family or friends to post it for you assuming they have access to the home. I will report on the outcome next month.

Another point I need to make is that there is a lot of information available on our website which includes anything of a technical nature so it's worth checking this out. [www.asoc.uk.com](http://www.asoc.uk.com)

Thanks to all the contributors this month as I have been able to fill this newsletter to the usual number of pages, which is excellent. Please keep this up as I can only edit it, not write it!

**Deadline for the April Newsletter will be by 10th March** and you can send your contributions to [daveatasoc@virginmedia.com](mailto:daveatasoc@virginmedia.com) or by post to the address below. Please don't leave it to the last minute as our post is a bit irregular. I do always confirm emails but I only check the Webmail nearer the deadline date and occasionally between the deadline times.

*David Mayne*

Items for the newsletter **MUST** reach your Editor by the **TENTH** of the month. You may post them to 27 Mentmore Rd Leighton Buzzard Beds LU7 2NY or email to [daveatasoc@virginmedia.com](mailto:daveatasoc@virginmedia.com).

Any item appearing in this Newsletter may be freely used by other publications.

Please acknowledge both author and source.

## Chairman's Chat



I am delighted to confirm that following the Chairman's Chat in January, one nomination for the ASOC Committee has been received and at the recent Committee Meeting, we were very pleased to co-opt John Geeson, a long standing member of the Club, as Treasurer Designate. John will be formally elected as a Committee Member at the AGM.

During the meeting, the Committee discussed revitalizing the Newsletter, including the possible use of colour. As you will have read in previous editions, unfortunately the current Newsletter Editor will not be seeking re-election in 2017. We are therefore very eager to hear from any members who feel they could take this project forward. As this will no doubt incur additional costs and to avoid an increase in subscriptions (do I hear a cheer?) a possible solution could be to ask for sponsorship from selected dealers who already offer benefits to members. It is planned to seek members' views on sponsorship of the Newsletter at the Open Forum during the National Rally.

During the past year or so, it has been noted that the number of raffles held at rallies has significantly reduced and during the Open Forum we will be interested in obtaining members' opinions on raffles at rallies. Should you not be able to attend the Open Forum, I will include your views on either of these topics, if you send to me by email or letter.

Safe Travelling

Jill

We have just learnt that Derek Marshall sadly passed away on Sunday 7<sup>th</sup> February. Lilly and Derek left the club last year due to ill health after nearly 20 years membership.

**THE NATIONAL RALLY**  
**28<sup>th</sup> April to 02<sup>nd</sup> May 2016**

**Come and join us at your club's National Rally at Newark Showground**

**If you haven't yet booked for the 2016 National Rally, don't forget I would like your application by 10<sup>th</sup> April.**

**We have had such a good response for the Saturday coach trip it is fully booked. However we do still have some spare seats for the Sunday Trip.**

**SMC are again laying on a minibus to their showrooms on both Saturday and Sunday afternoon so you can view the latest Auto Sleeper models.**

***National Rally Tombola***

For the 2<sup>nd</sup> year I am running a Bottle and Can Tombola at the National Rally, in the Sir Stuart Goodwin Pavilion, assisted by Chris Mawdsley.

All proceeds to the Club Charity.

We would be very grateful if club members could start collecting bottles and cans to donate to the Tombola. The more we have, the bigger the display and the greater the contribution to the charity.

Many thanks

*Liz Irvin*

## **Photographic Print Competition 2016**

All images will be on display and judged at the National Rally.

There are 2 categories and you are invited to enter up to 2 photographs in each and they can be either 6x4 inches or 7x5 inches or the metric equivalent.

### **Category 1 Set Subject**

Each photograph **MUST** contain at least one Auto Sleeper Motorhome taken on or off a rally.

### **Category 2 Open Subject**

Each photograph can be any subject of your choice, taken on or off a rally.

For winning photographs in each category there will be awards of:  
1st place £15, 2nd place £10, and 3<sup>rd</sup> place £5.

During the National Rally, attending members will have the chance to vote for their favourite photograph for which there is a further award for the photographer of £20.

Entries may be sent in **anytime** up to 25<sup>th</sup> April 2016.

Entries to be posted (not E mailed) to:

Jean Hollingsworth.  
24 Norton Grove,  
Kingston upon Hull.  
East Yorkshire  
HU4 6HL

Please ensure correct postage otherwise I need to collect them from the post office and pay additional postage charges.

**AN OPEN INVITATION TO PAST,PRESENT AND  
PROSPECTIVE RALLY MARSHALS.**

The Committee would like to cordially invite Past, Present & Prospective Rally Marshals to the Stuart Goodwin Pavilion at 4.15 p.m. on Friday 29<sup>th</sup>.April for a cup of tea or coffee and an informal chat.

**COMPLETED FORMS RETURNED TO RALLY ORGANISERS AND OTHERS**

When filling out Rally Application Forms and other ASOC documentation could members please be aware that their writing is sometimes difficult to decipher. Recently some errors occurred on my interpretation of written information regarding our Irish Rally in June 2016.

Fortunately these were picked up by the Membership Secretary when checking our list of ralliers. These were only minor errors on our part but carefully written forms could have avoided this happening. Two examples were a crossed 7 where the cross was at the base and appeared to be a 2 and an X which looked like a K.

To avoid similar mistakes in the future, please take a little care when filling out your form. Your co-operation would be appreciated by all who have to read these forms. Thank you.

*Shelagh and Phil West*

---

**On reading the Feb. News letter I felt I had to put pen to paper.**

When the man of the house suggested we joined ASOC at the Club & Company Rally in Malvern, I politely told him 'No Chance, I don't do Happy Campers!' to which he replied, well we'll go as a Day Visitor.

Having thoroughly enjoyed ourselves we signed up there and then and as there was an unexpected pitch available I sent him up the road to bring our 'Legend' to the site! and enjoyed many further Rallies while living in Malvern.

Contd over

When we retired to Scotland in 2006 our rally list was greatly shortened because of the distance 110 miles from Stranraer to the Motorway before we start our journey south, but 23 years since joining ASOC and running 3 Rallies in the last three years I would say to anyone 'It does not matter how many rallies you attend its the friends you make and the experience you gain'

*Ann Smith 1533*

---

It appears an on line petition has been set up to get the government to look into getting towns etc to set up motorhome aires over here as they are on the continent. I think it needs 100,000 signatures to get the government to look into discussing it in parliament, when I signed it had about 4600 so it needs all the help it can get ( do 100,000 people own and use motorhomes in the UK I wonder? ).

To sign you need to go to:-  
[petition.parliament.uk/petitions/105748](http://petition.parliament.uk/petitions/105748)

You will be asked for your name, e-mail address & post code. When you input these you will be sent an e-mail containing a link which you have to tap to complete the signing.

Give it a go it may help.

*Eddie Conner 9091*

---

### **Help Reqd**

I have been looking online and in the magazine for a members forum where you can ask other members for advice., but I can't find one. I wanted to see if any other owners had had front and door cab folding blinds fitted retrospectively on their vans, particularly on a Nuevo, which is what we have. We have booked to have these fitted in March but I am slightly anxious to know if they work successfully and to make sure the fixings don't impede vision when driving. We very much want to get rid of the curtains that wrap around the front seats.

I would be grateful for your help in pointing me in the right direction.

We like the magazine and find the technical tips very helpful. Hopefully we'll manage to get on a rally sometime this year.

*Margaret and Selwyn Marsh (8956)*

## **Boondocking**

You may know this is popular in the USA and Walmart warmly accept overnight stays on their store car parks. You must not put out tables and chairs as this would constitute camping and also ask the store managers permission. Asda being part of Walmart I telephoned Asda head office to see if they held the same view as the US. I was told overnight stays are at the discretion of the store manager, which means you might be allowed to stay. I may test this out when I come across a store, even if I do not intend to take up the offer. Perhaps, other members could do the same and let me know the outcome and what store. Having an Asda carrier bag full of goods when you ask may just swing it?

John Morris 2388

[jm@redwink.uk](mailto:jm@redwink.uk)

---

## **ASOC - OUR CLUB**

It has been sad to read recently of members leaving because they don't want to attend rallies. A lot of effort goes into these. But they are not compulsory. We made good lasting friends with several members at our first AGM, but sadly have managed to attend only 5 other rallies elsewhere over the last 3 years. Despite bad weather at some, we enjoyed every one of them.

If nothing else, the ASOC offers terrific Autosleeper's support, (since they do manufacture a complex bit of kit), and at the current cost of membership, all the time we have an Autosleeper, we would never consider NOT being members.

We mostly use our Motorhome for walking breaks, and it may be of interest to members that we have recently been using rural pub car parks for overnight stays. I kept an article from Practical Motorhome June 2013 about the "Nightstop" scheme. It looked to have possibilities, and has come up trumps.

We have tried a few of those listed in that June article, and all have been fantastic experiences. We tend to ring up first, to check they still offer the service. Usually the arrangement is a free night's stay in the car park for an evening meal in the pub. Several have dedicated electric hook-up, or will provide a lead if you ask. Often we have a walk where there is no listed pub nearby. In these cases, I simply go on the internet and find pubs in the area, ring the landlord, (trying to avoid their busy times), and if I draw a

blank, ask if they can recommend another pub in the area. It has never failed.

We arrive mid-day, introduce ourselves and check the menu, level the Motorhome, switch the fridge to gas, lock up, and go for our walk. On return we freshen up, get changed and then off to the pub.

Oh dear. All this food - we will need another walk tomorrow.....!

If you don't like "loadsapeople" rallies - try this. Its fun!

*David and June Beavan 8202*

### **ACCEO National Rally**

The ACCEO National Rally will be held on Staffordshire County Showground from 28<sup>th</sup> September to 3<sup>rd</sup> October and an ASOC rally will be included and advertised in the Newsletter nearer the time.

ACCEO have produced a 'flyer' to advertise the activities planned during the rally and sent a copy to ASOC. The flyer can now be viewed in the 'stop press' section of the ASOC web site:  
[www.asoc.uk.com](http://www.asoc.uk.com)

*Peter C Brown*

### **Rudesheim**

Mike and I are going on the Rudesheim rally in June. As we have only experienced a short trip into Northern France so far, we were wondering if anyone could give us any tips on travel arrangements, sites to visit on the way, and gas tank filling adapters in both France and Germany. We have a 2014 Broadway FB with fixed gas tank.

We will be using the Dover – Calais crossing so any site suggestions from there would be much appreciated.

As the rally is only 10 nights, we would hope to stay "overseas" for about three weeks.

Please e-mail [val.pippard@gmail.com](mailto:val.pippard@gmail.com) Many thanks

*Val & Mike Pippard (8862)*

## **Ebers Heaters**

Some motorhome forums do not speak highly of "Ebers" heaters. I would be grateful to read of ASOC members' experiences with this form of space heating.

As the owner of a 1997 Duetto, wishing to upgrade to one of AS's more recent creations, I admit to being hesitant to change from my current very reliable gas heating.

*Bill Cameron 4968*

---

## **TV On the Move**

Many campers and caravanner's see one of the benefits of the pastime as the ability to escape modern media however many others wish to keep up with the news, regular home viewing patterns or just not miss the occasional big event that they are interested in.

There are three vital ingredients for successful operation of TV on the move; a power supply, a TV and an aerial (cable, terrestrial and/or satellite); you can also add a DVD player or PVR (Personal Video Recorder).

## **Power Supply**

The choice of power supply is largely dependant on the type of location that you camp. If you are always on a site that has a 230v mains supply available then all options are available to you. If you camp away from the availability of 230v then you need some form of portable supply.

230v generators are an option but they are heavy and usually noisy and smelly. LPG fuelled generators are available but costly and petrol fuelled generators require a supply of petrol to be carried. Use of generators is prohibited in some locations and frowned on at others so I would suggest thinking long and hard before adopting this as an option.

The most common type of power supply used when camping is from a 12v DC Leisure Battery. The unit you use for camping may have a battery (or two/three) installed or you may carry a battery with you. Whatever battery(ies) you have with you they have a limited capacity and you need to consider that (and what else you power from the battery) when deciding how much TV you want to watch and whether a charging alternative to 230v is desirable.

If you move on regularly then charging from your motor vehicle is probably all that is required. If you stay on site for a few days and consume quite a bit of 12v capacity then either a portable or a roof mounted solar panel can (depending on the weather and daylight availability) replenish the battery capacity.

Another option that is becoming available is to use a Fuel Cell to maintain the charge in your 12v battery. A Fuel Cell is a device that uses chemical reaction to generate electrical power silently. Currently available devices are fuelled by methanol that is not that easy to get hold of because of safety restrictions when it is transported. Fuel Cells are also available powered by LPG but are still in the early stages of development. I think fuel cells are the way for the future but they are currently very expensive and heavy.

## **TV**

If you have decided that you will always have 230v then the entire range of TV's is available to you. The size and availability of facilities will be your consideration. If you have decided you will be using a battery supply then you would do well to choose a TV specifically designed for the camping environment in particular that it can be powered direct from 12v DC and that it will consume minimal power. It is possible to use a small inverter to convert 12v DC to 230v AC and therefore use any TV but inverters are inefficient in the use of power capacity.

You need to decide whether you want to watch terrestrial TV or Satellite TV (or both). All modern TV's will include a receiver compatible with European terrestrial digital TV standards and many will now include a type of satellite receiver. There are pros and cons to both alternatives.

In the UK there are many areas, particularly in favourite holiday localities, where reception is not possible from the main TV transmitters. Many of these areas have coverage provided by repeater transmitters that do not have the capacity to transmit all of the available channels and of course in some there is no reception at all. Use of local terrestrial TV in mainland Europe is varied. For example in Germany, Austria and Switzerland there is virtually no terrestrial TV, in France it varies from region to region and in Italy it seems prolific (1000 channels) everywhere. Every time you move location you have to re-tune the TV and (if possible) adjust the aerial to receive whatever channels are available where you are. On some TV's the 'audio' button allows the selection of different sound tracks and you

will often find that a programme made in English but dubbed in another language will have both tracks transmitted and you will be able to select English.

Satellite reception is much more widely available as all you need is a line of site to the satellite that is hovering over the equator. This is particularly true if you are within the 'footprint' that the broadcaster is aiming the satellite at. However tall buildings or trees breaching the line of site will prevent reception, as will extreme weather conditions. Once the satellite receiver is tuned it stays that way wherever you are, all you have to do is point your aerial at the satellite.

Whether built into the TV or a separate box there are two types of satellite receiver (three if you include the Sky subscription service). The Freesat version will only receive the Astra 2 satellite that is aimed at the UK and transmits all of the Freeview TV channels plus a few more. Without a very large aerial this signal is only receivable for most UK channels in mainland Europe up to about 100 miles from the nearest UK coastline (based on personal experience in Europe this year).

The alternative Free to Air Satellite receiver will receive many different satellites (including, when in range, all the Freesat channels) all over Europe. Different satellites are tailored in the channels they transmit to one or several countries but they all transmit several English language news stations and many American and UK films/programmes often in English. The Free to Air receiver is slightly more complicated to use than Freesat, but the versatility is worth it. For instance since the BBC stopped showing all F1 live, even when at home, I watch the race on the German RTL channel on Astra 1 in the van and get the commentary from Radio 5 Live.

Whether or not you want to be able to play DVD's is something to consider and whether or not HD vision is your preference (with my eyesight on a small screen it makes no difference) will affect your choice of TV. Many people prepare for trips away by recording programmes of interest and films shown in the preceding months on to a PVR and taking that with them.

Do think carefully about power, connection cables and wiring routes that will be necessary before procuring separate receivers/players.

## **Aerial**

## **Terrestrial**

You will notice that TV aerials on houses can be either fairly long and thin that add a high gain to the signal at the expense of being very directional, or shorter and wider giving less gain but also being less critical in direction. You will also notice that most aerials are mounted with the elements in the horizontal plane but that in some locations the aerial elements are in the vertical plane, the later being targeted at repeater transmitters. As you approach your intended camping location it is a good idea to note in which plane and in what direction the local house aerials are pointing to aid in your setting up.

For camping a short directional aerial will give best results. You can obtain a pole and aerial from your local hardware shop and stick it on a spike in the ground or tie it to your outfit and then connect it to the aerial socket on the TV. If you wish to spend a bit more and have a easier set up then you can have a directional aerial fitted to the roof of your unit. These aerials are designed for camping use and come with an amplifier designed to make up the lack of gain from the less directionally sensitive aerial.

Circular aerial are also available for camping use. These are designed to receive a signal from any direction (omni-directional) but in doing so they have no gain and even with an amplifier need to be in a strong signal area. These either work or don't depending on where you are. Some omni-directional aerials have a spike in the middle, this is intended to receive the vertical signal from repeater transmitters but its addition further reduces the overall performance of the omni-directional aerial.

Several sites in poor signal areas have a cable TV signal distribution system installed. If you connect to one of these systems you need to connect it directly to the aerial socket on the TV, possibly via an external socket on your unit installed for the purpose, bypassing any amplifier fitted for use by the units own fitted aerial.

## **Satellite**

These aerials can be either portable or fitted to a unit, be dishes varying in diameter from 25cm to 100cm, be half dishes encased by a dome and come with either manual or automatic satellite finding.

The smaller the dish the more directional it is and the less gain it has. For a manual set up then a 60cm dish is relatively easy to set and will provide

good coverage in Europe albeit not always from the Astra 2 UK satellite. 1m and sometimes up to 2m dishes can be used in southern Europe if there is a real desire to receive UK TV. Dishes in domes can be smaller as they are aligned by computer and thus easier to set up. Their performance is often described as equivalent to an xxx cm diameter dish.

Portable aerials come in all sizes (some in briefcase sets but with a very small dish) and can be attached to a surface with suckers or just put on the ground or a table but most use a tripod. Portable dishes are vulnerable to both theft and wind but do allow much more flexibility when looking for 'line of sight' than one fixed to a unit. A tripod can be pegged down and possibly chained to some fixed object. On a hard surface a 10 litre full water container strapped to the tripod will hold it in place.

Manually aligned dishes fitted to units are lighter than the automatic equivalents and use less power but you do have to develop a pretty good 'nose' for where the satellites are to always set them up quickly. Whether manual or automatic alignment is used it's a good idea to check you can get the signal you want before setting up awnings and the like. There are various electronic satellite finders available to assist in setting up a manual satellite.

### **Peter Brown**

---

Further to my article in the December newsletter on battery problems .After having my air bag module replaced, a few days later I had two more warning lights on the instrument panel ,front brake pads and electronic immobiliser. After doing some research I came across a bulletin from Peugeot stating they had been made aware that some Boxers had been fitted with the incorrect 680a batteries, all Boxers should come with a 950a,. I contacted customer care Peugeot U.K. I was told quite abruptly that the technicians at Bristol had found them to be adequate, for a commercial van used every day maybe. Returning to my Peugeot dealer to rectify the warning lights they had not heard of the bulletin as it had not been a recall. There was a fault in the instrument panel and they had to replace the whole of the dash pod. They also submitted a claim for a new battery and when I went to collect my van I was surprised to find they had fitted a new 950a battery, despite my van being over two and half years old . I leave you to come to your own conclusion why the change of heart.

*Derek Steele No 8425*

*Editor: Apparently there was only one MH manufacturer that this applied to. Clearly all the faults are down to the dash board but will be of interest to all Peugeot owners including me!*

## Autosleepers "Gatcombe"VW T4 2001

Spasmodic Automatic Gearbox problem after 68000 miles approx.  
We get a very slow gear change with engine racing before engagement into higher gears.

Our problem starts on driving away from cold or after a two hour park-up. After two (2) new gearboxes changed by VW we still get this spasmodic problem.!

A VW.technician has witnessed our problem ONCE with us .BUT VW. will not accept that the A.A. and other Electrical experts say it is an " Electrical Control Unit" ECU fault.!

Has anyone got the answer to our problem.?

*John & Angela Hutchings. 2331.*

---

## Technical Group & Website



**Webmaster and Chairman Technical Group:** Baz Wellard can be contacted at 18 Greenwood Close, Fareham, Hants PO16 7UF or email : [technical@asoc.uk.com](mailto:technical@asoc.uk.com)

### Filling LPG Tanks:

As if there is not enough confusion already regarding differing connectors for LPG propane, butane & continental cylinders, there is now an added situation with the filling of LPG tanks.

Up until recently 2 connectors for LPG tank filling were considered sufficient for the more 'regularly' visited continental countries. However, I was unaware, until talking to Mike Valentine, that another connector is being introduced in Spain.

Should you need advice to identify/buy a connector or if you have any general LPG tank questions Chris Wise, of Autogas 2000, has kindly agreed to help members. His contact details are:- **cwise@autogas.co.uk** or Tel. 01845 523213. Autogas 2000 is also listed in the "Deals for Members" page on the Club website.

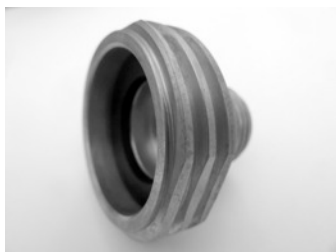
Chris is also offering members a 10% discount on LPG connectors. For the discount it is necessary to order by telephone - quoting your Membership No.

The differing connectors are:-



The 'dish connector' version is for France, Italy, and some other European countries.

**Autogas 2000 price is £13.44 (inc. VAT & p&p), also included is the 10% discount.**



The 'ACME connector' version is for Germany, Belgium & Ireland, and some other European countries.

Autogas 2000 price is £11.35 (inc. VAT & p&p), also included is the 10% discount.



The latest connector, the 'Euroconnector' or 'Euronozzle', is being introduced in Spain.

Autogas 2000 price is £12.30\* (inc. VAT & p&p), also included is the 10% discount. (\*Without the optional one-way valve.)

For those without any connectors the cheapest, and most popular, is the cotton bag of all three for the sum of £19.15 inc. vat, excl. p&p. No discount though.

### **Membership Numbers:**

Could I ask if you would include your Membership Number in all correspondence to the Committee, please? It does save time having to search for eligibility on the Club's database.

### **Ideas Sheets:**

The following Ideas Sheets have been approved by Auto Sleepers:-

- No. 240 Alternative Thetford C-402C R Toilet Flush Repair
- No. 241 Prevent a Bike Rack Damaging a Peugeot Panel Van's Side

### **Website supplementary updates:**

- **01a\*/16 Rally list & spreadsheet:**
  - Cheddar rally added
- **01b\*/16 Deals for members**
  - Autogas 2000 10% discount on continental LPG connectors
- **01b\*/16 Stop press:**
  - Safety recall for a Novacommet LPG Regulator - Not fitted by A~S. For info only.
- **01c\*/16 Technical – Ideas Sheets added:**
  - No. 240 – Alternative Thetford C-402C R toilet flush repair
  - No. 241 – Prevent a bike rack damaging a Peugeot panel van's side.
- **01d\*/16 Technical – Recall**
  - DVSA (was VOSA) recall for some Boxer motorhomes. "Instrument display may turn off intermittently": Contact your Peugeot dealer for more information.

**N.B.** \*Supplementary updates are not promulgated, so regular visits to the 'Updates' page is recommended.

Yours aye  
*Baz Wellard*  
Chairman Technical Group & Webmaster

---

## A Warm Welcome to New Members



Membership Numbers from 9382 to 9398

Andrew & Ann Maddison	Wakefield	Bourton
Phil & Debbie Vivian	Poole	Clubman
Derek & Margaret Pope	Wimborne	Bourton
Paul & Janice Sanderson	Coventry	Kingham
Stevie Johnson-Mansley & Sal Grace	Canterbury	Executive
Nigel & Sue Bryant	Bristol	Symbol
John & Diane Sawyer	Presteigne	Pollensa
John & Sue Wright	Rochester	Legend
Peter & Linda Mesney	Carlton	Symbol
Keith & Diane Brennan	Ramsbottom	Executive
Aidaen McHale	Eastbourne	Duetto
Brian Clarke & Anna Malina	Cockermouth	Amethyst
Roy & Vera Davey	Holmfirth	Duetto
Gary & Linda Humphries	Plymouth	Sigma
Keith & Val Oliver	Southampton	Romero
Morris & Christine Lee	Fleclney	Topaz
Sally Miller	Winchester	Nuevo

**Membership Secretary:** Jill Bertlin, The Rockeries, Sunny Terrace, Lindale, Grange-over-Sands, Cumbria, LA11 6LQ or email: [jbertlin@aol.com](mailto:jbertlin@aol.com)



Thanks for your  
Donations .

### **Auto-Sleepers Talisman 2003.**

73,000 miles. £18,750. 2.8 diesel. 2/3 berth. Dinette 3 way fridge Main/gas heating Oven 4 rings Awning Bike-rack Immobiliser/alarm No pets/smokers. Annual service/habitation record. MOT Aug 2016. Robert Moy

**01214452872**

**moyrj@doctors.org.uk**

---

For Sale: Drive-away Awning - Vango AirAway Kela Standard - £375

Based on latest AirBeam technology fits motorhomes between 1.8 and 2.4 m in height. Dimensions: Pack size: 65x30x30m; Weight: 14kg; Width 310 cm; Height 215 cm; Length 320 cm; Inflatable Air Chambers x 2; Colour: two tone grey.

Still in excellent condition with too many magnificent features to mention which can be checked out on Vango website. Price includes: Inner and removable sleeping chamber x 2pps: Footprint to protect integral groundsheet; electric pump (£70 new)and figure 8 x 4 rods- alternative to tension band fixture to van; Instructions. Reason for sale: Hardly Used.

For further details/information please us on 01934 512023 or [vag.thomson@btinternet.com](mailto:vag.thomson@btinternet.com)

### **Peugeot 2.3L Boxer (D)**

**Nuevo.** 2007 (new style). 2 berth. End kitchen. Bench seats. Bathroom with swing wall shower. 19,300 miles. Truly excellent condition throughout. Hardly used being reason for sale. All the standard equipment plus bike rack, up-rated suspension units. sun awning, TV. Lilliput awning, External cover ( needs minor repairs). £27,000 ovno. Roger Gray. **01883 715537**

---

**6 Mugs** with the original Crocus design and sugar bowl (Never used)

£10. Contact Pauline on **01483 480413 (Surrey)**

---

The Editor reserves the right to edit or omit items. Advertisements for items to be sold or wanted by members are published free of charge, however, small donations to Club funds are appreciated and will be acknowledged. No guarantee can be given that any item will appear in the next,or any, issue of the newsletter. Cheques should be made payable to "Auto-Sleeper Owners Club" and not ASOC and send to the Editor.

Copied from page 2