



[www.asoc.uk.com](http://www.asoc.uk.com)

# **AUTO-SLEEPER OWNERS' CLUB**

A Company Limited by Guarantee  
Registered Office: Orchard Works, Willersey, Nr. Broadway Worcs. WR12 7QF.  
Registered No: 4616969.



## **NEWSLETTER 291**

## **December 2012**

## From the Editor



Well firstly I must say what an excellent response to my plea for articles. Apart from the two left over from last month, I have received about 50 items this month!!

Some of these items relate to problem parts or similar and A/S have been asked to comment so may not end up in this issue but a later one., as will many others that I can't fit in the 20 pages that I have. But they will eventually be put in.

As you will see elsewhere, Dudley and Kathleen Woodhams are leaving the club due to his purchase of a non A/S motorhome, this means I have lost my Deputy Editor.

It is very useful to have a Deputy or Relief Editor in case I am unable to do the business due to ill health or some other catastrophe, So are there any budding Editors out there? They would need to have Microsoft Publisher or similar but we do have a club copy for use when Dudley sends it back. Please get in touch if you have the skills. I do a template for Publisher to make life easier, although I use Pageplus (I prefer it as I have used it for years).

I would like to thank Dudley and Kathleen for all their past support on behalf of the club and wish them well in their new motorhome.

Finally Pat and I wish everybody a very Merry Christmas and a Happy New Year.

Remember the **Deadline for the next newsletter will be 10<sup>th</sup> December**, or earlier if possible as Christmas and New Year holidays will give Mick our Printer less time to get it out, so don't be alarmed if it's a bit late, especially with the Christmas post situation. Mick normally excels at this time.

All contributions to [daveatasoc@virginmedia.com](mailto:daveatasoc@virginmedia.com) or via post at address on back page.

*David Mayne*

# Chairman's Chat



As you will see from Baz's article we recently attended a liaison meeting at Willersey. I am not going to add to his report, but I was struck by how friendly the welcome was and how many people at the factory were interested to know how the club is progressing.

There is a real family feeling about A-S these days and it is good to see the Club included. We do receive a tremendous amount of support from A-S, particularly their sponsorship of our National Rally and the new members under the Marquis scheme. What is not so obvious is the "behind the scenes" work which they do for us. As an example did you know that every one of the Ideas Sheets we produce is checked out by their staff before publication?

So, I would like to take this opportunity to thank Geoff Scott and all his team for their support and assistance – long may it continue!

On a personal note, Angie and I wish you all a very Merry Christmas and a Happy New Year. I don't think a new motorhome would fit under the tree but you never know!

*Andy Cavell*

## **MARSHALS REQUIRED.**

Rally marshals are required for the following rallies, The Northern Show(Cheshire), Abingdon Cricket Club & Hereford Rowing Club.

Rally information and assistance is available in all cases.If you are interested then please contact me A.S.A.P.

If we cannot find any volunteers then we will lose these rallies and other clubs will move in and take the dates and locations.

*Neil Rogers ( Rally Co-ordinator).*

### **Charity Choice 2013 - A Reminder**

As members may remember from the National Rally, we annually select a charity that would benefit from fund raising activities and we would like to do the same at the 2013 National Rally. The selections would be made by the Committee, from nominations made by you, the members.

The criterion is that it should be a lesser known national charity. Nominations will remain anonymous to the committee until a charity has been selected. If you would like to nominate a charity for 2013, please write to me at 31, Abbott Lea, Mansfield, Nottinghamshire. NG19 6NF by the 10th January 2013. Please make sure you send everything direct to me with full details of the charity you nominate and why.

Please enclose 14 leaflets of the charity for the committee (I will make copies of your letter). It would also help if you could confirm that your charity, if selected, would be able to set up a stand at the National Rally, and that a representative would be available to accept the cheque on Sunday morning.

Looking forward to receiving your nominations.

*John Jones.*

*Reprinted as John has yet to receive any nominations*

---

### **Cheques to the Club**

The Club asks that cheques to it are made out in the full name of the bank account "The Auto-sleepers Owners' Club". Bank rules dictate that cheques should only be accepted if the full account name is used.

It does vary from branch to branch but most banks will not reject a cheque that is made out to pay ASOC, the clubs initials.

The danger with using initials is that if the cheque falls into wrong hands, they are easily changed and the writer of the cheque could be the subject of fraud. The club does not indemnify members from fraud.

Very recently a renewal application was damaged in the post. The damaged envelope arrived with the Membership Secretary, an included self- addressed envelope arrived back with the sender and the cheque has disappeared and was subsequently stopped.

Cheques can get lost. If you use initials for the club name you increase risk of loss to yourself!

*Peter Brown*

## Rally Reports

### Alva and Dunbar Rallies

What great rallies these were, both marshalled by Moira and Allan Blackstock in September. Both rallies were new to us and although the setting of the Alva rally was wonderful with hills all around us, the immediate area was not known to us but we soon warmed to it, visiting the nearby Falkirk Wheel and Wallace Monument and there's lots more to do in this area too.

But what made the rally so good was the hospitality of Moira and Allan, they provided us with lovely Scottish oatcakes and cheese with our coffee and tea each evening and organised a horse shoe throwing match - what a hoot, two birthdays were celebrated and cake was supplied and enjoyed by all for both these occasions.

There was just one night to pass after leaving Alva until we joined the rally in Dunbar and again the rally was in a lovely spot about a mile from the town itself, easily accessed by bus for those less mobile, we walked in and came back via the John Muir Way which runs along the coast and provides wonderful views of the rugged coastline and birdlife which even included a flock of swans on the beach.

Moira and Allan arranged a meal for everyone at a nearby pub and also taxis to take us there and back. Both the rallies were so friendly and informal, we're not sure what Moira and Allan's secret formula is but they certainly know how to run a successful and friendly rally. Thanks to you both, please do it again.

*Brian and Eunice Lockett 6486*

---

### The Fab Five go on a bike ride

Picture this **The Whitemead Rally**, and five people with the Olympic Cycle racing still in their minds eye.

Scoffing at the official marshal led sensible cycle journey through the forest, the Fab Five take to their motley assortment of conveyance. In the lead with a beautiful, fully electric, posh saddled, steed was Peter A, sporting his "proper cycle attire", topped with a florescent jacket to die for!! Closely followed by Jean, whose posh electrics had, unfortunately given up at the last minute. ( But bravely she cycled on with calf muscles at the ready). The

third of our party was Judy, on her "just made for this sort of expedition" shopper or JMFTSOE for ease of understanding. Leaving the birthday boy to fend for himself and enjoy not being nagged, and best of all, free wifi. Bes was next, what a trooper, never say die and keep on pushing those pedals. Our outrider was Pink Floyd expert, and florescent jacketed anchor man Pete. He had his hands full looking out for traffic and wild boar that may be lurking ready to jump out and scare us. He was riding his sensible folding, light weight for the van, JMFTSOE racer.

We set off towards the cycle centre at a cracking pace, never mind those dodgy hip and knee joints, bad backs, and puffing lungs. This is adventure, keep on trucking, whoops sorry pedaling.

Hooray, reached the first stop. Cross tracks and sign post, but oh dear - where is our faithful Pink Floyd expert? No one has noticed he is not tagging along. Has the large police presence, stopped him for defective brakes, or cycling alone in a non built up area? No, there he is bravely pushing those pedals for all he is worth, even with a dodgy hip.

On to Connough Ponds, where we stop again, for a bit of a rest and a lovely view. Plus a banana snack for some and a quick drink for our intrepid leader. Well he said it was water, but who knows. Next the easier bit, the tarmac road, but what's that coming toward us? Yes, it's those brave fit hearty souls, on the official marshal led journey through the forest, looking very smugly at us poor amateur riders. We wave and greet them with a cheery hello - gritting our teeth and remembering to add at least a couple of imaginary miles to our expedition in the retelling. Oh thank goodness, the cycle centre at last, bring on the bacon sandwiches, tea and coffee, we certainly deserved it.

Going back was easy, just a bit of nagging doubt about the poor mad woman wearing glove puppets, (oh sorry not PC) the lady with mental health issues apparently sighted in the wood. Police presence explained. They did not seem to be able to find her, so I hope she was the figment of an overactive imagination, or they were able to locate her before dark.

Three hours later, sore of leg and derriere, back to the safety of the Whitemead rally, all ready for a nice cup of tea and a lie down. More adventures to dream of and look forward to.

P.S Thank you marshals for a great venue, great weather and a great time.

PPS Can we have easier quiz questions next time?

Best wishes to all

*Judith Horner.*

## **Malvern Show Rally 2013?**

In reply to Geoff and Sheila 7730 we would also agree that the Malvern C & W Show is probably the best one of the year. We went for the first time this year and thoroughly enjoyed every minute. The music shows were great - plenty of choice as well. We enjoyed the 'cowboys and indians' re-enactments which were done throughout the day and the 'outside' music was first class - it's the first time we have ever bought CDs from an act at a show. Its great fun to see so many people dressed up in costume to go along with the western theme - we even bought cowboy hats - and what a job to stop Les buying a replica gun and holster - maybe next year! So yes if the club do run a rally we will certainly go - its great to then go on to Topsham which followed on - shame it had to be cancelled.

*Patricia and Leslie Udale 6849*

---

## **Malvern Show.**

Thank you Geoff and Sheila 7730 for your notes on Malvern. I, too, have enjoyed the Show for the last two years, and know that there are many other ASOC members who attend, either camping with another Club or in the general section. Would they, and any others like ASOC to run a Rally there and join with us? (Aug 16-18 2013).

If so, I am willing to Marshal, but need others to co-marshal with me. Please let me know asap if you are interested: email [commember2@www.asoc.uk.com](mailto:commember2@www.asoc.uk.com) phone 01244 675180

*Gill Hopkins*

---

## **Another French Rally**

We will be organising a rally at Montreuil Bellay in the Loire Valley for ten nights starting on Monday 26<sup>th</sup> August 2013.

We're sure we don't need to tell you about the attractions of this area as they are very well known. Details will be finalised shortly and should appear in the rally supplement in January.

*Angie & Andy Cavell*

## **Recently Joined**

We have recently become members of your club, and unfortunately it is too late to join in this year. Having read your newsletter it appears everyone works very hard and also has a lot of fun.

We are looking forward to reading about next year's rallies and joining in on some, encouraging us to maybe travelling a little further than we normally do.

*Ray and Jean Foster*

---

## **Leaving Us**

It is with regret Joan and I have sold our van and will no longer be members of the Club. We have thoroughly enjoyed our membership and have met many lovely, interesting people and thank you all for the friendship you have given to us – there is no difference between the North and South if you have similar interests. Thank you for all the fun and knowledge we have shared and hope you all have better weather in 2013.

*Ernie and Joan Prince 1044*

---

We are very sorry and upset to be leaving the club as Norman hasn't been well this year and cannot drive too far these days. We have had 23 years in the club and had so much fun and laughter at all the rallies we attended, and at the rallies we ran. We made so many lifelong friends and nobody can take away our memories. We are still keeping "Lancashire Lass" (the best van ever), now 23 years old and still running well and have had few problems.

A very Happy Christmas and New Year to all ASOC Members and Happy Rallying for 2013

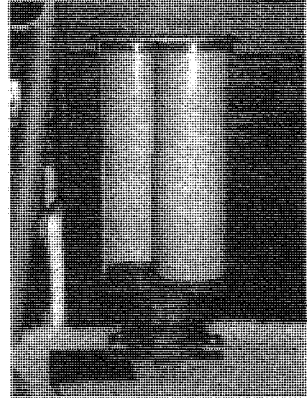
*Best Wishes Kath and Norman Benyon 418*

---

## **Wind generator and sad news**

Following on from my article about the wind generator that I purchased from Maplins I enclose a picture of the genny. I said that I could still use it at home for keeping the vehicle battery charged during periods of rest. I was totally wrong I set it up above the garage for a month and although it spun, what I call, really well but never reached the magic 30 mph required to generate 13.4 volts. The consequence of this was that when I needed it the

battery was flat, caused by clocks, alarms etc. The whole system has been checked and there is no fault it's just that the no-use discharge does just that - discharges. The obvious conclusion is that I would not recommend this product.



Now for what Kathleen and I feel is a very sad moment in our lives with ASOC and being Deputy Editor. We're leaving. For this situation place the blame firmly where it deserves to be, Auto-Sleeper. As a lot of you know we have the original style Duetto and ours is 15 years old and still going strong and I use a powered wheelchair. We missed the National because my Mum died and I'm sure with her blessing and our inheritance from her, we decided that it is a great time to update.

Our criteria was, it had to have a fixed bed, plenty of floor space(for the dogs) and a garage big enough for the wheelchair and of course enough payload to comfortably take the things we need. Everything else was negotiable. So with this in mind we searched everywhere on the Internet and no way could we find an Auto-Sleeper that met even the first two criteria. We couldn't afford a new vehicle so didn't have the option of asking if it was possible to modify an existing model. This being the case we had to look elsewhere so off we went to Brownhills Newark(two and a half hours down the road), where we were greeted with smiles and all the staff were really helpful. Well, you know what Christmas shopping is like, this was much much worse. After some 20 hrs on the Internet and three hrs on site we settled on an Auto-Trail Cheyenne which ticked all the boxes and we are impressed with the build quality. The van is 7 metres long and 2.4 metres wide and the point of telling you this is for the ladies in the club because **Kathleen** has to do all the driving due to limitations on my license due to my diabetes.

We would like to thank everybody at ASOC for their friendship, help and support through some difficult times particularly Peter and Chris, Liz Irvin, Jeanne Hall, Di and Bren, Andy and Betty, Cedric and Mo and OH HELP!!!! there are so many and we thank all and are going to miss you. I owe a BIG apology to David and Pat Mayne to whom I promised to carry on with the Newsletter but circumstance overtook us.

Hoping to see you all on the road, keep on motor-homing  
*Kathleen and Dudley Woodhams 5658*

## Leaving ASOC.

To quote from that well known song sung in their own inimitable way by Peter Cook & Dudley Moore ; "Now is the time to say goodbye."  
We joined ASOC when we first purchased a Trident in about 1993, i think our original ASOC number was 762. We sold it in '98 and in those free and easy days we were allowed after a humble approach to the committee to pitch our tent at the ASOC enclosure at Shepton Mallet so that we could look for another Autosleeper. This was on condition that we "huddled up" to our good friends Jan and Geoff Rawding in their motorhome.. We did a deal with that well known and established dealer Frank Williams at Cotswold Motorcaravans and our Talisman was delivered the following March. We sold it recently.

We have very fond memories of those shows at Shepton, the Club & Company rallies at Malvern and more recently the carnival rallies at Burnham on Sea. My digital images act as a reminder and i think some of them are in the ASOC archive. The C & C rallies were great fun. Over the years i recall there was a ride on a hovercraft, clay shooting, archery and a ride in a tethered hot air balloon. Queues for the opening of the company shop which was like entering an Aladdins cave! Baz was the organiser ably assisted by Dorothy and many others.

Over at Shepton we always looked forward to seeing Ben & Eirwen and of course having a few of Eirwens welsh cakes – nearly as good as those made by Beth!! It's wrong i suppose to start mentioning names because we have met and enjoyed the company of so many of the ASOC members and we wish them all good health and enjoyable holidays.

But you never know we might be back. The van we've bought is a tight squeeze on the drive, we should have measured it before we did the deal!  
Best wishes.

*Dave & Beth Thomas* 1482.

---

## Latest Executive

"I am building a new website dedicated to the limited 50th Anniversary Executive model and would like to contact any other proud owners of this model. You can contact me at [phylymann@yahoo.com](mailto:phylymann@yahoo.com).

*Stephen leVine*  
[www.executive50.moonfruit.com](http://www.executive50.moonfruit.com)"



## December 2012 Rally Supplement.

*A very Happy Christmas to all members.*

Please carry your ASOC membership cards when attending rallies.

All rallies start at 12 noon unless otherwise stated in this supplement.

**\*\*\*\*\* It is the responsibility of each rallier to ensure that they arrive at a rally on the correct day and time for the start of a rally. This will avoid embarrassment to both parties. The marshal is entitled to ask early arrivals to leave and return at the correct day/time.**

***If you are unable to attend a rally or will arrive late please inform the marshal.***

Applications for rallies must be made on ASOC rally slips.

Please inform the Rally Marshal beforehand if you wish to bring a car, trailer or tent to a rally.

***Will Marshals please ensure that they have the post code for their site as it is necessary if you need to contact the emergency services.***

### MARSHALS REQUIRED.

Rally marshals are required for the following rallies, The Northern Show (Cheshire), Abingdon Cricket Club & Hereford Rowing Club. Rally information and assistance is available in all cases. If you are interested then please contact me A.S.A.P

We intended organising a rally at Cognac, France in 2013. The site however, proved to be unsuitable so the rally will now be 20 miles away from Cognac but still in the Charente region.

**Saintes Rally, Friday 28th June - Monday 8th July 2013, 10 nights.**

The site is about 480 miles from Calais.

This year the site fees are 17.66 Euros per night, but for next year we have negotiated a discount and we will pay approximately 12 Euros per night per motor home, which includes electricity.

There will be a non-refundable deposit of £20 per van required to secure a place.

**Further details will be available in early 2013 when applications for this rally will be taken.**

Jean & Dave Hollingsworth.

**25th February - March 1st (4 nights) Whitmead Forest Park , Parkend , Nr Lydney , Gloucestershire.GL15 4LA.**

Emergency mobile 07528442136.

Rally Marshals: Yvonne & Stuart Wood and Celia & Alan Waugh.

Site fee including hard standing , hook up and entry to the leisure facilities is £18.50 per night.Rally fee including room hire is £5.50 for couples & £4.50 for singles.

Please send rally slip & cheque to Yvonne Wood:-26 Burton Acres way , Highburton , Huddersfield , West Yorkshire.HD80RF. Tel.No.01484604133.

If confirmation is required please send S.A.E. or give E-mail address clearly.

Ensure any special requests are put on the slip.

**Attractions:-** Walking & cycling in the forest , a guided walk one day , local pub serving good food at a reasonable price, discounted food on site and a local sculpture park .

**Directions:-**Into Lydney town centre from Gloucester turn right at Swan pub before level crossing (signposted Parkend).Follow to PARKEND Station and turn left at Fountain pub, at top of road turn left , site on left 100 yards.

Limit of 32 vans . Do not arrive before 14:00 hours (site rules).

*We depend on volunteers within the Club to act as Rally Marshals.*

*If you know of a suitable site why not think about running a rally.It is not difficult & help is available.Committee members are available to assist if required.*

*A "Guide to New/Possible Marshals" is available. If you would like one please contact me.*

*I have some sites that have offered a rally site,they have not been vetted as to their suitability for rallies,please ask if interested.*

*It is important that all potential rally dates and venues are checked with me first as unless they are approved by the Club,there will be no Public Liability Insurance.*

**Neil C. Rogers**

**3 Appleby Close,**

**Aldbrough St. John,**

**Richmond,**

**North Yorks,DL11 7TT.**

**Tel./Fax. No. 01325 374 540.**

**E-Mail. ncr@mypostoffice.co.uk**

**E & OE.**

Rally ..... Date.....

Your name and address (Please PRINT) .....

.....

.....Post Code.....

Phone No. .... Mobile No.....

e-mail.....Membership No.....

Van Reg..... Model/Length.....Arrival Day/Time.....

In the event of an emergency at the rally whom should we contact?

Name..... Phone No.....

**Please complete both sides of this form.**

*f*

Is this your first ASOC rally? Please tick box. Yes  No

Number of people in your van: Adults..... Children.....

Adults' names (Incl. forenames).....

Childrens' names (incl. ages).....

Cheque enclosed for £..... for..... nights incl. rally fee.

**Extras:** Please indicate which you would like, if available: \_

Electricity: Yes  No  Evening meal: Yes  No

Have you any special needs? Yes  No . If Yes please specify:-

.....  
**Full payment MUST accompany this slip-cheques payable to the marshal.  
POST FORM TO REACH MARSHAL 14 DAYS BEFORE EVENT,if possible.  
Enclose a SAE if confirmation is required.**

# Christmas Greetings

"We would like to wish all members an enjoyable Christmas and all the best for 2013. Hope the weather will be better than during this year and you will be able to enjoy lots of rallies.

Also we would like to thank those members who have kept in touch with us regularly all year following Keith's illness.  
Yours sincerely  
*Rita and Keith Taylor*



Wishing all our friends seasonal greetings and looking forward to seeing you all in 2013  
*Chris & Shirley Sturgeon 2897*

*Jill & Richard McAllister* send Christmas greetings to all our friends in ASOC together with all Best Wishes for the New Year.

*Mo and Cedric Jones* send Season's Greetings to all their friends in ASOC.

Rita & John Tubb would like to wish all of our friends a Merry Christmas and a Very Happy New Year and we look forward to meeting you again in 2013.



*Pauline & Neil Rogers* would like to send their best wishes for a Merry Christmas and a Happy New Year to all their friends in the Club.



*Dave and Theresa Smith* would like to wish all our friends in ASOC a very Happy Christmas and a Peaceful New Year.



Christmas greetings from *Gill Hopkins* - may we all look forward to good rallying in 2013! (Donation to charity in lieu).

*Liz & Bryn Morgan* would like to wish all our friends in ASOC a Happy Christmas and Good Health for 2013.

Instead of sending cards we will make a donation to Francis House, a local children's hospice.

To all my friends in the Club I wish you a very happy Christmas and plenty of happy Motorhomeing in the New Year. I do miss you all and look forward to seeing you in the New Year.

*Nora*



*Allan & Moira Blackstock* wish all ASOC members the very best of Christmas greetings and a happy, healthy and prosperous New Year hoping to see many of you at rallies in 2013.

A donation will be given to our local hospice in lieu of cards and stamps.



## ARE YOU GOING TO USE EURO TUNNEL AND FERRIES?

Just a reminder to members you can exchange your Tesco vouchers for your journey on Euro Tunnel and some ferries exchanging them for three times value (it used to be four). I have used my vouchers for Euro Tunnel on many occasions when travelling to France.

Usually all goes smoothly but on one trip, as it was not very busy they decided to load me last and we found ourselves in a compartment on our own with a few spare compartments behind us. We had a slight delay as a vehicle had a petrol leak in the compartment in front which had to be evacuated and sealed for the journey through. When we arrived in France they would not allow the vehicle to drive through and contaminate the whole train which meant I had to reverse back out through the train. They had to hold everyone else up while this was done. Last on, first off and away without a care leaving all behind me.

Something to bear in mind; If you have to come back earlier than your allotted ticket. We had to return a day earlier than planned when a family member had to go into hospital. We phoned the UK side of Euro Tunnel and were told we would have to pay a single fare of £90. Not being able to confirm a time when we could travel we decided to just turn up.

We explained at the French check - in kiosk we were returning a day early and could we rebook. We were told no high spaces were available but after a telephone call to someone, they apologised and asked if we could wait a couple of hours and they would load us, but we would have to pay, but only 8 Euros. In the end they loaded us before our allocated slot.

Interestingly they would not let me go forward to fill up the last space in a compartment but made me stay in the following one which allowed them to load cars behind me, apparently they needed a high vehicle to be in the compartment to be able to do this.

*John Morris 2388*

---

### **Revenue Weight.**

I recently received the 'new style' red registration document for our Executive, with which there was a request to check that the details were correct on this newly issued form. On checking this I realised that the 'Revenue Weight' on the registration document was different to the 'Gross Vehicle weight' shown in the handbook and on the Vehicle Information Plate, being lighter by 100kg. On checking with DVLA I was informed that

the Revenue Weight should be the same as the gross Vehicle Weight, and to send the Registration document back to Swansea with supporting evidence to allow them to make this change.

Peter Kingsnorth, Homologation expert at Auto-Sleepers, kindly supplied a document showing the correct weight and I have sent everything off to Swansea for correction. The worrying part of this episode is that Peter also informed me that this error affected my owner payload - have I been travelling loaded over the legal limit for the past 3 years? Hopefully soon to be rectified.

Moral - Check your vehicle registration document weight agrees with the plate on the vehicle. Our Executive is now 8 years old and copies of the previous Registration Documents all carry this error - worrying!

*Mike Tucker, 5477*

Ed: I've checked mine already. It's left blank. Perhaps a new one is on the way!

---

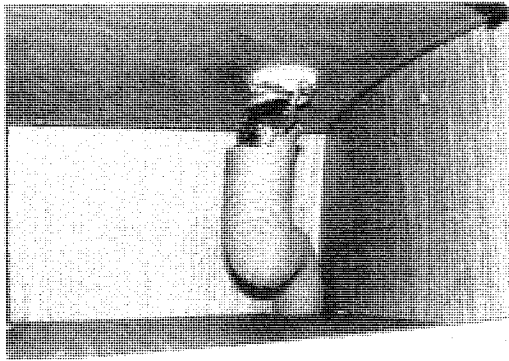
## **Truma Trauma**

In September we spent a couple of weeks touring the Isle of Man, and very pleasant it was too.

The weather was mostly kind and scenery was fantastic. The camp sites are just that, camping sites in my opinion. They are geared up for the bikers that invade the IoM every year. The only site we found which was up to most mainland standards was at Laxey and it was very good. It was here where met a local with a M/H and she kindly located on our OS map many of the legal wildcamping places. They are all in lovely places and frequently by seawalls or harbours.

Now, what about this Truma Trauma? Well, we were wildcamping with the harbourmaster's permission by the seawall in Port Erin (SW corner of IoM) with lovely views of the picturesque town and cliffs, seagulls whirling by and seals in the bay. Bliss, what could go wrong? During the evening the wind picked up to Force 5 or 6 and the temperature dropped. So whilst I was in the local hostelry checking local brews, as you do. "She who must be obeyed" decided to light the fire. Now we have a Truma where the gas is ignited by a piezo spark. She tried about 6 times without success then after about 5 mins tried again. But this time there was an almighty bang and the top of the chimney blew off and there was a smell of smoke. When I returned she was cold and jumpy.

Investigating I discovered that not only had the chimney cap blown off but the flue pipe where it goes through the roof in the wardrobe was shredded - see photo. I was able repair it all there and then and it worked well and safely. What I think happened is this. The wind blowing under the M/H was at a higher pressure than that going over the roof (aerofoil effect).



The gas from first attempts to light the fire had gone up the flue and were ignited by the second attempt to light the fire, hence the bang.

I don't know what lessons are to be learnt from this incident, but it is safe to say that our holiday on the IoM went with a bang.

*Patrick Beaumont.*

---

### **Notes on the Port Erin Truma Heater Incident**

To set the scene - In September 2012 while camping on the Sea Wall in Port Erin on the Isle of Man during a spell of cold and windy weather a member experienced a "blow out" in the flue pipe of a Truma heater fitted in a 1995 Auto-Sleeper. The heater was running on propane and was last serviced in November 2010.

What is a "blow out" – "blow outs" happen when a build up of gas/air mixture in the combustion chamber ignites and the flame travels up the flue until it either runs out of energy or shoots out of the terminal. The effect depends on the amount of gas/air mixture involved and varies from a barely audible pop to an almighty bang. However it should be noted that this effect is limited by the combined volume of the combustion chamber and flue and they have to be full of a precise mixture of gas and air to get the greatest effect; it's clear that there must have been a substantial build up on this occasion.

How does the gas/ air mixture build up - There are normally two ways. The first is when the heater is running and the flame goes out; when this happens the gas continues to flow for up to 30 seconds until the flame failure device (FFD) switches it off.

The second is when we are trying to light the heater. The process is to continuously operate the piezo igniter for a few moments while pushing in the gas control knob to allow gas to flow to the burner.

In both cases the manufacturer's instructions tell us to allow plenty of time to allow the gas/air mix to clear before trying to light it again.

In this case we know that the heater was being lit when the blow out occurred but, if the normal lighting procedure was being followed with adequate pauses to allow the gas building up in the combustion chamber to clear after every failed attempt, there should not have been a problem. There clearly was, so this is where I have focused my attention.

As I have no evidence to suggest otherwise, I have assumed that A) the gas flow was at the correct rate and pressure B) the heater and its air intake, flue and terminal (chimney) were all in good condition C) the installation had not been modified D) the person lighting the heater was following the manufacturer's instructions and E) nothing like this had happened before.

Given the above it seems logical to conclude that some external effect prevented the gas/air build up from clearing as it normally would and I believe that on this occasion a rare combination of wind speed, location and vehicle orientation caused areas of high and low pressure to establish above and below the motorhome that exactly balanced the heaters ability to clear itself. This caused the gas/air mixture in the heater to stagnate and become trapped in the combustion chamber and flue until another attempt was made to light the heater.

I cannot be certain this was the cause but nothing else makes any sense; unfortunately, unless we were able to exactly replicate the circumstances, we will never be able prove it.

I note that the owner was able to effect repairs and has reported that all is now well but I would be failing in my duty as a registered gas operative if I didn't advise the owner not to use it until it has been checked by a Gas Safe registered person to make absolutely sure it is now operating correctly

*Alan Curry*  
*Auto-Sleepers Customer Service Manager*

Editor: I'm grateful to Alan for investigating this matter and you should all heed his wise words. We have another item re gas generally from Alan but it will have to wait till next month. I've run out of space!!

## Truma Water Heater

In 2010 I wrote to the news letter asking for help, regarding my Truma water heater which misbehaved if windy (i.e. the flame was blown out.) I did receive a lot of advice and suggestions and some from the web so I was not alone, I am thankful for those. However I might have found the answer by luck. While washing the vehicle I decided to remove the plastic air in exhaust out cover to wash it, only to find the aluminium plate behind the plastic was loose, the fine thread self tapping screws were just loose and could not be tightened, (either holes too large or over tightened). I fitted new screws and have had no problems since. I am hoping the wind passed through the gap and pulled the flame away from the thermal couple. Hope this might help someone.

Nigel Wilkins.

---

## Technical Group & Website



**Webmaster and Chairman Technical Group:** Baz Wellard can be contacted at 18 Greenwood Close, Fareham, Hants PO16 7UF or email : [baz.wellard@virgin.net](mailto:baz.wellard@virgin.net)

### Liaison Meeting with A~S:

Andy Cavell (*Chairman*) and I have recently had another informal liaison meeting with Geoff Scott (ASG CEO). This was the 12th such meeting and they continue to be very useful to both the Club and also A~S, the subjects ranging very broadly, including the regular visit to the R&D department to see the latest venture and techniques.

We reviewed the recent NEC show and the ACCEO AGM rally; the latter being hosted by ASOC with financial donation from ASG. Plans were also discussed regarding the financial and practical support to the 2013 National Rally by A~S. Various technical and policy matters were also discussed

You may be aware that ASG (Marquis) have now bought the very large site at Durham; but perhaps not aware that it is large enough to accommodate storage of motorhomes. If storage of your motorhome is a problem, and you reside in the general area, contact the site direct on 0191 4922480 for details.

**Winter:** Winter is now almost with us and it's time to prepare motorhomes against the worst elements. The two very important actions are to: -

1. Ensure that the water system is totally drained down and all taps left open. Also ensure that no bottles, with liquid, are left in the van.
2. Take your van out for a good ride regularly – I suggest at least once a month.

For further advice there are two Ideas Sheets: - No 85 - 'Guide to Winterisation and No. 219 Winterisation Updated Guide. For copies e-mail me on [technical@asoc.uk.com](mailto:technical@asoc.uk.com) or write to me at my home address, with SAE, as above.

**Canvas repair:** Having had to repair a small tear in my awning tent I sought advice and was recommended to consider "Stormsure", which "repairs & strengthens rips & holes in most materials". I am more than satisfied that the finished repair is flexible, strong, clear, and did not need use of a patch. Cost £4.99 and is available from most caravan/motorhomes accessory dealers.

**Truma Regulator & Filter:** Truma have recently developed a filter for the LPG system which is designed to prevent 'blockage' of the LPG regulator. However, there was some confusion whether the fitting of the filter was essential for the regulator to be covered under warranty. Geoff Scott (CEO A~S) has kindly checked and reports that: "*Truma have confirmed it is not essential to have a filter fitted in order for there to be warranty cover on the regulator.*"

**Website updates general:** Currently 80% of members are registered as having access to the internet and of those 577 (54%) receive information immediately I update the website. If you are on the internet and not receiving the information and wish to - simply e-mail me on [webmaster@asoc.uk.com](mailto:webmaster@asoc.uk.com). For those not on the internet the Newsletter always contains brief details of all updates and, if you're interested, a trip to your local library is all that is necessary. Library staff are always willing to help and it's free.

**Website Update No. 10/12 contained;-**

- Provisional rally list for 2013. Allowing prospective rally marshals to compare dates of other rallies.
- New ASOC liaison officer to the ACCEO – Ozzie Jones

**And finally:** Always laugh when you can. It's the cheapest medicine.

Baz

# A Warm Welcome to New Members

Membership Numbers from 8065 to 8095

Keith & Stella Channing	David & Jane Bush	Eugene & Carol Potter
Julian & Linda Johnson	Paul Nickson & Ann Sweeney	Dennis & Doreen Taylor
Michael & Pauline Tatham	Stan & Sheila Brown	Ron & Hilary Wittridge
Danny & Avril Thompson	Ian & Jean Mackay	Alan & Peggy Lawrence
Paul & Cherry Bromage	Vaughan & Joy Oriel	David Ritchie
Stuart & Jean Hopkins	Peter & Vera Palmer	Vic & Alison Stephens
John & Kathy Leroy	Mary Doncaster	Mike & Wendy Sullivan
Clive & Kim Young	Alun Jones & Judy Millard	Nadia Bonwick
Ian & Patricia Simpson	Bob & Kath Cave	Robin & Julia Pipe
Colin & Catherine Hamilton	Pete & Janet Dabell	Richard & Marilyn Tawn
		Donald & Karen Lee

**Membership Secretary:** Jill Bertlin, The Rockeries, Sunny Terrace, Lindale, Grange-over-Sands, Cumbria, LA11 6LQ or email: [jbertlin@aol.com](mailto:jbertlin@aol.com)



**A-S Talisman SE 2** berth 2003 model, 2.2 diesel, 26600 miles enjoyed, MOT until November 2013.  
Usual A-S quality plus :- solar panel and split charger, Silver Screens, Drive away awning. Auto-cruise, Cat 1 alarm, A-S crockery, full set handbooks and service history. £22000 o.n.o.  
Tel-**01766515705**. David Myers, Porthmadog, North Wales.



Thanks for your  
Donations .

**Auto sleeper Peugeot Talisman 2002**  
Reg, Selling due to bereavement. Manual,  
Diesel, Engine 2800, mileage 55000, Mot  
May 2013, Shower & Toilet, Bike Rack,  
Parking Camera, 2nd Battery and Charger, 4  
Berth, 3 Owners, Comprehensive Service  
History, £19995 ONO, contact Irene Bundle  
**01366 383317.**

---

Due to a change of M/H the following items  
are for sale:-

**Drive-away Awning** for Duetto £250 on -  
plus postage

**2 brand new tyres** (done 3 miles) Mohawk  
195R14C on transit wheels £25 + carriage  
Assorted Bilton Tulip crockery FREE plus  
postage

Contact: Dudley **07815954957** or  
**snowgoose1@hotmail.co.uk**

---

**Silver Screen insulated fold down  
windscreen cover** with storage bag for a  
Peugeot Nuevo. Used only once before we  
changed our van. Best reasonable offer  
secures. Delivery to be discussed. Alan  
Birch (Shipham) **01934 842016** -  
**AandAShipham@gmail.com**

---

**Silver Screen insulated non fold down  
windscreen cover** with storage bag for a  
VW Clubman. Approx 12 years old but in  
good condition. Best reasonable offer  
secures. Delivery to be discussed. Alan  
Birch (Shipham) **01934 842016** -  
**AandAShipham@gmail**

**Auto-Sleeper Nuevo 2008**, Peugeot 2.2  
(130 bhp), 34,930 miles, VGC. 1 owner  
FSH; tax, MOT & habitation to 6/13; sleeps  
2 (2 sgl or 1 dbl); Thatcham cat.1 alarm; full  
Gaslow tank; cruise control, cab aircon,  
awning, bike-rack, reversing camera, roof  
bars & ladder, mirror protectors, solar  
panel, TV with freesat autosearch,  
separate shower, full gas cooker, gas &  
electric hob, fridge/freezer; gas/electric fire,  
heating & HW; electric step, exc storage.  
£27,000 ono  
Susan Quinlan, Nr Glastonbury, Somerset.  
**suzie.que@tiscali.co.uk**  
Tele: **01458 851 224**

---

Auto-sleeper Cotwold (2011) **Double  
shaped mattress for the fixed bed.** Hardly  
used, almost as new. £30-00.

**Maxview "Crank-up" caravan satellite  
system** with free-to-air digital satellite  
receiver, (requires new base-plate available  
from Maxview) £200-00.

Buyers collect or arrange delivery.  
Tel: Tony Denton **01442 265355**  
email: **awdenton@btconnect.com**

---

**Raleigh Motor Annexe** for sale. Free sand-  
ing awning purchased for a 1989 VW Troop-  
er but never used. Some structural elements  
(wires etc.) may be missing. Original Cost  
£199 Sale Price £20. Purchaser must col-  
lect. Sheffield area. Contact David on  
**01142368770.**

---

**Silverscreen for Nuevo Es 04** on Peugeot  
cab. with storage bag in excellent condition  
£best offer. will agree delivery.  
Phone **01489 895834**. Near  
Winchester/Southampton.

## Contents

From the Editor	2	Leaving ASOC	10
Chairman's Chat	3	Latest Executive	10
Marshals Required	3	Christmas Greetings	11
Charity Choice Reminder	4	Euro Tunnel and Ferries	12
Cheques to the Club	4	Revenue Weight	12
Scottish Rallies Report	5	Truma Trauma	13
Whitmead Rally Report	5	Truma Water Heater	16
Malvern C&W Show 2013	7	Technical Group and Web	16
Another French Rally	7	New Members	18
Recently Joined	8	For Sale	18
Leaving Us	8	Committee Details	20
Wind Generator and Sad News	8		

## Committee Members

President	Charles Trevelyan	
Chairman	Andy Cavell	01635 201976
Secretary	John Osland-Jones	01217 448065
Treasurer	Peter Brown	07771 827711
Vice-Chairman	Jill Bertlin	01539 534500
Rally Co-ordinator	Neil Rogers	01325 374540
Webmaster & Chair, Tech.Group	Baz Wellard	01329 231259
Regalia Officer	John Jones	01623 627903
Newsletter Editor	David Mayne	07964 532936
Membership Secretary	Jill Bertlin	01539 534500
Chairman, AGM Sub-Committee	Al Buckett	01304 369149
Minutes Secretary	Alan Waugh	01392 271955
Committee Member	Mike Valentine	02392 482818
Committee Member	Gill Hopkins	01244 675180

Any item appearing in this Newsletter may be freely used by other publications. Please acknowledge both author and source.

Items for the newsletter **MUST** reach your Editor by the **TENTH** of the month. You may post them to 27 Mentmore Rd Leighton Buzzard Beds LU7 2NY or email to [daveatasoc@virginmedia.com](mailto:daveatasoc@virginmedia.com).

The Editor reserves the right to edit or omit items. Advertisements for items to be sold or wanted by members are published free of charge, however, small donations to Club funds are appreciated and will be acknowledged. No guarantee can be given that any item will appear in the next, or any, issue of the newsletter. Cheques should be made payable to "Auto-Sleeper Owners Club" and not ASOC and send to the Editor.

**IMPORTANT:** Contributions from Members are published in good faith in the hope that they will prove interesting and useful. All reasonable care has been taken to ensure accuracy but no modification or suggestion has been tested by the Company, the Club or your Editor. Therefore no warranties are expressed or implied nor indemnities given. You try them out at your own risk.