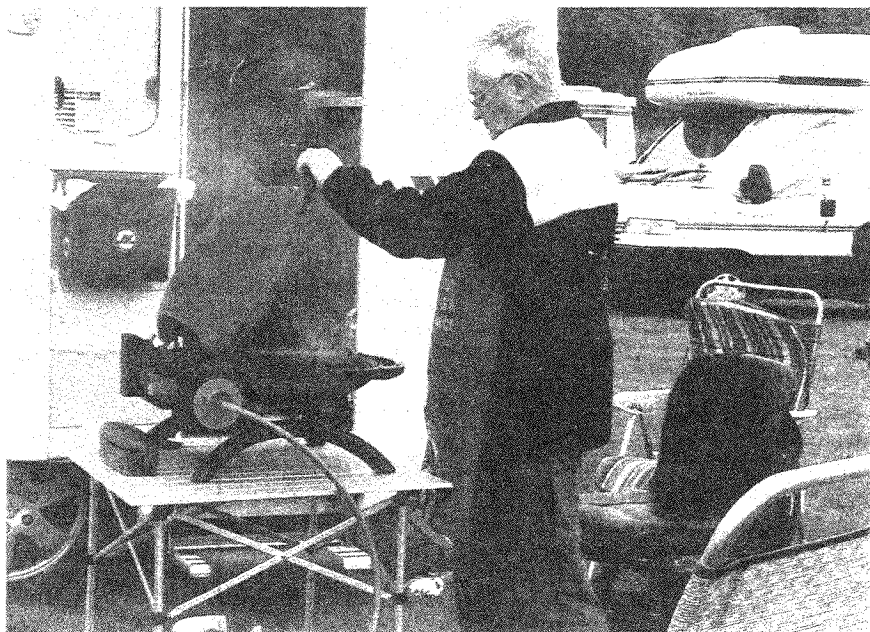


www.asoc.fsnet.co.uk

AUTO-SLEEPER OWNERS' CLUB

*A Company Limited by Guarantee
Registered Office: Orchard Works, Willersey, Nr. Broadway Worcs. WR12 7QF.
Registered No: 4616969*



*Thanks to Les I think we can see Alan
demonstrating how to smoke an
AutoSleeper, but true story page 11*

NEWSLETTER 274

July 2011

From the Editor (S)

Here we are again in the dungeons of ASOC towers still slimy cold and very damp but if the weather improves again it may get a bit dryer. So far this year we have been to three rallies and have another two booked so things are looking very good for us at present.

I don't know what you all think but the three rallies we have been to have been the best we have ever been to. I have no idea why but there it is. Perhaps it's us because Kathleen retired in March this year and at present I am experiencing a period of really good health, for me that is.

Wasn't it a wonderful National Rally, good weather, great organisation and content and of course how wonderful it is to meet up with everybody that we may have seen during the past year but especially those we only ever seem to meet at the National, it's like a wonderful family gathering. Some of you may have noticed we didn't have a hobby table this year and the reason for this was that we never seemed to have time to do anything for ourselves and we found that we did have time to meet up with friends and talk to people without having to rush off, it was absolutely fabulous and look forward to next year.

Peter previously mentioned that we need your views on what you want from your newsletter and it is very important that we get them because it is yours and we need your support in order to produce it, (my view - 80% you, 20% committee).

This may be the killer on the input but many thanks to you all who have contributed and apologies to those who haven't made it this month

So enough of us, on with the show.

I know that some of you would have withdrawal symptoms if Peter wasn't in the early pages so from Peter:-

Walking in France

Earlier this year, a contributor to the Newsletter advised that it is now a

legal requirement in France to stop if, when in a residential area, a pedestrian shows clear intent that they want to cross the road. This advice was given from a drivers point of view.

I have now had the opportunity from a pedestrians point of view to define what 'clear intent' means. I have found that if you attempt to commit suicide by throwing yourself in front of a moving French vehicle then the driver will attempt to stop. In all other cases - He has right of way and WILL take it.

Normal Welcome Displayed by ASOC Members

We would like to say thank you to everybody who made our first rally with you such an enjoyable event.

Although we celebrated our 45th Wedding Anniversary on the 30th, we did not expect to be treated so "Royally".

We have since met up with Mervyn and Irene Kitchin, who joined us for our weekly boules session in Tenterden and we are both looking forward to future ASOC rallies.

Richard and Ivy Birch

Richard and Ivy please be assured that there is nothing you or any other members send in that will be classed as a dupe and it will almost always be published, that's what we want—input. Dep. Ed.

Regalia Price Update

Unfortunately I have had to make some price increases on some items or Regalia, owing to new stock arriving.

They are as follows:-

Lapel Badges	£4.25
Polo Shirts	£12.30
Sweatshirts	£13.25

John Jones

MORE ON BATTERY CHARGING

I read with interest David Garraway's letter on battery charging.

I have a 2002 Nuevo with the same setup. Just to clarify further to my note to Peter last month

The charging of the leisure battery switch is permanently selected but attached to the leisure battery is a "battery mate"? fitted by Vanbitz when they fitted the alarm which allows the vehicle battery to take a top up from the leisure battery as required so the alarm will always work and the vehicle should always start!

Thank goodness my leisure battery is not sealed, a good reason not to have a sealed type. well it is 9 years on the same battery but have to admit the stoppers look a bit worse for wear with the topping up required on a regular basis. I may revert to Peter's advice when a new battery is required and put it on a timer.

John Morris

For Those With a Delicate Disposition

We read in the June newsletter about the foam mattress toppers and rushed out to buy a double one! We have had caravans with fixed beds for many years and found the bed in our new (to us) motorhome a trifle bumpy. When I unpacked the new mattress I thought that it is about the size of a single duvet cover and this would make bed-making even easier – like a fitted sheet! A standard British cover is too narrow – BUT a single duvet cover from Ikea is just the right size. (150mm as against 135mm wide) I thought other new motorhomers would find this information useful.

And, **Caravans in the club?**

A thought on the debate about allowing Autosleeper caravan owners to join the ASOC – We received the latest Caravan Club magazine this morning – and lo and behold a motorhome is on the front cover!! I'm sure if members want to avoid children on a rally – keep away from school holidays. We are in favour of increasing the membership to include caravans.

Pat and Les Udale

Help and Tips

Many thanks to Beryl and Dave Dalziel for their assistance when we tried to put up a new day tent we had bought at Peterborough Show. We are now proficient in getting it set up, and the tent, now affectionately known as Beryl, is a valued member of our camping kit.

In the last edition there were various tips on refrigerators and keeping the door open when not in use. Something else that might be useful to the readers is actually wiping out the fridge with a weak solution of water and vanilla essence. This tip also works for refrigerators in the home after being cleaned. Thank you for your assistance and good luck with the producing of the magazine. I look forward to its arrival each month.

Best wishes

Sue Coxon

Motorhomes & Caravans?

The issue of whether The Auto-Sleeper Owners' Club should extend membership to Auto-Sleepers caravan owners was conclusively 'put to bed' at the AGM with a vote being taken resulting in 209 members against including caravans and only 5 for accepting them.

In spite of this overwhelming decision, the Chairman considers it short-sighted and asks for more discussion...

Many of us transferred to motorhomes from caravans when the children no longer came along, so we are not anti-caravans, we just enjoy spending time with folk of like mind who fully appreciate the differences involved in somewhat diverse hobbies.

A major contributory factor against including caravans was raised prior to the vote, by several members who run rallies (including the Rally Co-Ordinator) that on many rally sites, the combination of motorhomes and caravans would be incompatible. On such occasions, for Marshals to exclude 'caravan members' would be unacceptable - 'human rights' and 'discrimination' spring to mind.

There is a good relationship between the Club & the Company which

benefits both, but that does not make it necessary to change the original principles of the Club set out in the Articles of Association.

James & Jill Bertlin - 2770

A Plea for Your Expertise

We have an Auto-Sleeper Excelsior (96) and wondered if anyone could explain why we often have a small amount of water which appears in the groove around where the toilet is seated.

Also, whilst holidaying in Scotland last year we developed a horrible smell which was reminiscent of a gentleman's' urinal. We then developed a wet patch on the carpet outside the shower, which we thought must have been coming from the shower. However when we opened the compartment to empty the toilet cassette we were horrified to find the whole compartment full of what should have been in the cassette! It was this that was causing the damp carpet and the horrible smell. We have never experienced anything like this before or since and are a bit baffled. (The green indicator was not showing our toilet as full.)

Finally, we have a built in battery charger which charges the leisure battery when we are connected to electrics. Should we leave this charging continuously, or not?

Many thanks for any help you can offer.

Richard and Christine Ryan

Charity 2011

I have just received two letters of thanks from Parkinson's UK. The following are extracts from the letters:-

Thank you very much for inviting me to your National Rally service on Sunday morning and for presenting Parkinson's UK with a cheque for over £2423.35. It was very humbling to receive such a sum and to know

it had been raised so quickly over the course of the weekend.

I can promise you that every penny will be spent wisely to help fund our research programme which ultimately will help everyone affected by Parkinson's wherever you live or camp!

Our work is totally dependent on voluntary contributions; hence we really do appreciate your kind and generous support.

Thank you again and it was a real pleasure to meet such a lovely group of people.

Yours sincerely

Paul Boothman

Vice Chairman of Parkinson's UK

Dear Mr Jones

I am writing to express your sincere thanks for the support shown to Parkinson's UK by the members of the Auto Sleeper Owners' Club at their recent National Rally. Your donation for £2423.35 to our Huntingdonshire Branch will be hugely valuable contribution towards your work to find a cure for Parkinson's.

None of this progress would be possible without the support of people like your ASOC members – and we are immensely grateful for your generosity. Please pass on our thanks to your fellow Committee members and also to your members through your communications with them.

With thanks and kind regards

Carol Stork

Regional Fundraiser Eastern England

John Jones

Peugeot Radios Strike Again

I am contacting you in the hope that you may be able to assist or provide some advice/information regarding a problem with my 2005 Autosleeper Nuevo ES / Peugeot Boxer HDi 2.2 litre.

The problem is that the radio switches itself on completely at random !

This can occur whilst driving along or more annoyingly whilst parked or on site with the engine off, usually in the middle of the night ! The radio remains on for 20 minutes then switches itself off sometimes coming back on again almost immediately for a further 20 minutes, or other times remaining off for several hours. This happens quite unpredictably but does seem to be happening more frequently.

It does not seem to make any difference whether the Autosleeper's fitted radio isolation switch in the habitation area is in the 'on' or 'off' position.

This situation is obviously unsatisfactory as it is not only inconvenient and annoying, but is also causing a drain on the vehicle battery whilst the vehicle is parked up.

The vehicle is in superb overall condition, having covered only 19,000 miles and has been regularly serviced, in respect of base vehicle and habitation aspects.

The radio / CD player is the standard factory fitted unit and has not been modified in any way and I am aware of the feature which means that the radio switches off after 20 minutes. On occasions when I use the radio, this feature appears to operate as intended

I am also aware of the Owners Club Ideas Sheet number 63 (Jan 2004) titled ' Stop Peugeot Radios Cutting Out', but I have NOT carried out this modification.

Any suggestions or help would be very welcome. It is getting to the point where I am considering removing the radio fuse(s) on arrival at a site in order to ensure an undisturbed night's sleep !

Mark Summer 6551 mark.summer@btinternet.com

Information

It has come to my attention that the term editor is misunderstood by some people so for the record my understanding of the main parts of the job are as follows:-

Not to write articles but to edit them, either for grammar, English, spelling or without changing the meaning to make an article fit or flow better.

To withhold unsuitable material, or remove those parts which are.

And generally to piece the newsletter in this case, together with a flow and layout which makes it both interesting and pleasant to read.

So please don't be afraid of sending in your news or whatever in any sort of form and we will edit it for you if necessary , what we don't do is write it.

Dep Ed.

Cartmel Rally Report

What a lovely village Cartmel is, no wonder "Mavis" from Coronation Street went to live there.

On the Tuesday morning we travelled up through heavy rain, but as soon as we arrived the sun came out and we looked forward to the next few days. On the Wednesday many of us went for an enjoyable walk in the local countryside, led by Alan Blackstock. Many people also took advantage of the local bus service to get further afield in the Southern Lakes.

Then on the Thursday the grand finale to which we were all looking forward, our dinner in the racecourse restaurant, and we were not disappointed,an excellent meal in wonderful surroundings.

Many thanks to James and Jill, and there able assistants Alan and Moira, for once again giving us all an excellent rally.

John and Linda Hill

ASOC & Caravans

As the subject of admitting caravans to membership of ASOC appears to be exercising minds at the moment, I thought it might be helpful to members to set out the only way in which this change can take place.

Article 4. of the Club's Articles of Association states that "Membership of the Club shall be open only to individuals who are current owners of Auto-Sleeper motorhomes". That is clear and unequivocal.

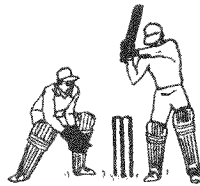
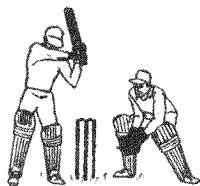
Article 17. states equally clearly "These Articles of Association may be amended only by a majority of three quarters of those members voting at a general meeting".

So the only way caravans can be admitted to membership is by an amendment to the Articles of Association at a duly convened general meeting of ASOC. This would normally be at an annual general meeting but a special general meeting could be called. This could either be done by the committee or in response to a written request signed by at least one tenth of the membership. Given the result of the unexpected vote at the AGM this year I would be surprised if the committee felt that this matter warranted the expense of a special general meeting.

Finally, in order for the resolution to succeed, assuming 250 members voting, it would need the support of at least 87.5% to approve it and not more than 12.5% to oppose it.

Hope that helps!

Andy Cavell



July 2011 Rally Supplement.

Please carry your ASOC membership cards when attending rallies.

All rallies start at 12 noon unless otherwise stated in this supplement.

Applications for rallies must be made on ASOC rally slips. The only exception is the National & AGM Rally.

Please inform the Rally Marshal beforehand if you wish to bring a car, trailer or tent to a rally.

1st - 3rd July (2 nights) Prestwood Steam Fair, Great Missenden, Bucks.

Emergency Tel. No. 07775570182 or 07749378587.

Rally Marshals: Jan & Vic Hicklin & Margaret & Bob Cleaver.

Fee for the weekend £18.50 per unit. Rally Fee: £2.50 per unit. (Incl. VAT).

NO Electricity.

The weekend fee includes unlimited entrance to the Steam Rally.

This is a GREEN FIELD site- own toilets essential.

Rally slips & cheques to Mrs. J. Hicklin, 381 Manor Road, Brimington, Chesterfield, Derbyshire. S43 1PP. Tel. No. 01246 236157.

If unavailable please ring Margaret on 01442 851080.

Directions: From A413 Great Missenden take the A4128 to Prestwood and follow steam rally signs.

NO arrivals before 1.00p.m. Friday please.

7th - 12th July (5 nights or less if you wish!)

Abingdon Vale Cricket Club, Abingdon, Oxfordshire OX14 3HP.

Emergency Tel. No. 07880 532057 (Marshal's mobile).

Rally Marshals: Angie & Andy Cavell and Mo & Mike Valentine.

Site fee: £6.00 per night: Rally Fee £3.00 (inc VAT).

Rally slips & cheques to A. Cavell, 24 The Close, Hampstead Norreys, Thatcham, Berks. RG18 0RY.

Attractions: This is a green field site adjacent to the River Thames and only a short walk from the town centre, which has a variety of specialist shops and several pubs. There are many local attractions including bus and boat services to Oxford. We hope to have the use of the pavilion for a get-together on Friday evening if the weather is bad! Dogs are welcome, subject to usual rules; there are walks straight from the site.

Directions: The cricket club is on the A415 Abingdon to Dorchester road. If you approach from Abingdon, it is on the right after you go over the river bridge. Don't turn in to the car park! About 100 yards after the car park there are two gateways side by side. The Cricket Club is the right hand gateway. Coming the other way it is the second of the two gateways on the left just after the 30 mph sign. Please do not arrive before 2.00 pm to allow us time to mark out the site

11th - 15th July 2011 (4 nights) Emberton Country Park Nr Olney, Bucks. MK46 5DB

This rally has been cancelled.

14th - 18th July 2011. Northern Motorcaravan Show, Cheshire Showground, Tabley, Knutsford, WA16 0HJ.

Emergency Tel. No. Marshalls Mobile 0786 8000 705

Rally Marshalls: Liz & Roger Spensley, & Eunice & Brian Lockett.

Please use the booking form enclosed in the May Newsletter if possible.

If you use a form from other magazines mark the form ASOC and note the special club site fees. Arrive Thursday £38, Arrive Friday £35, Arrive Saturday £32.

All bookings for Pitch and Saturday evening entertainment must be made with Warners and the booking form sent to them by **24th June**, if you wish to rally with the club.

****Then you must also complete a Club rally slip, (this also applies to internet bookings).

Return it with the Rally fee of £2.50 couples, £1.70 singles (inc.VAT) to: R. & E. Spensley, 30 Kilsyth Close, Cinnamon Brow, Warrington, WA2 0SQ. Tel. No. 01925 813558. Cheques payable to R. & E. Spensley.

The rally ends 12 noon Sunday but you may remain on site until 12 noon Monday.

Thurs 21st - Monday 25th July 2011 (4 nights) Beacon Park, Lichfield, Staffordshire.

Rally Marshalls: Ted & Trish Pratt & Vic & Jan Hicklin.

Emergency Tel.No. Marshalls' mobile 07713186508.

Site Fee: £5.75 per night inc. VAT. Rally Fee: £2.50 inc. VAT.

PLEASE NOTE THIS RALLY IS 4 NIGHTS LONG.

Booking slips and cheques payable to P.M.Pratt, 3 Grafton Rd., Stapenhill, Burton on Trent, Staffs. DE15 9DN. Tel.No.01283538818.

You may arrive on Thurs AFTER 12 noon NOT BEFORE PLEASE. (This is virtually a green field site although there are toilets in Beacon Park).

Sat. evening get together includes jacket potato, dessert and drink - £5.00.per person. Pay with booking slip.

If you would like to go on a tour of Lichfield Cathedral during the weekend, please telephone on above number to let me know.

Attractions: Beacon Park is adjacent to Lichfield City centre. Busses are available to National Arboretum from Lichfield bus station.

Directions: Beacon Park is situated on outskirts of Lichfield, just off the A51 Tamworth to Rugeley/Stafford Road leaving Lichfield. Follow brown Beacon Park tourist signs. Turn into Walsall Road, then immediately left into Lower Sandford Street. Follow signs for Car Park, the site is through the car park keeping to the right.

POSTCODE for Lower Sandford Street is **WS13 6RA**.

28th July - 2nd August (5 nights) Leon's Field, St.Ives, Huntingdon, Cambs. PE27 5ER.

THIS RALLY IS NOW FULL

2nd - 6th August (4 Nights) Redgate Junior School, Hunstanton, Norfolk, PE36 5DY

THIS RALLY IS NOW FULL

11th - 16th August (5 nights) Eskdale School, Whitby, North Yorks.

Emergency Tel. No. 07711 271568 (Marshal's mobile).

Rally Marshals: Liz Irvin, Peter Brown & Chris Mawdsley.

Site Fees £6.00 per night. Rally Fees £3.50 couples £2.00 singles (both include VAT). **Greenfield Site, No Toilets, No Electricity. All Hardstandings.**

Booking slips to Mrs E. Irvin, 43 School Lane, Kirk Ella, HULL, East Yorkshire.HU10 7NP. Tel. No. 01482 658345. Cheques payable to Mrs. E. Irvin.

Attractions: Whitby Regatta 13th 14th & 15th August. School off the Scarborough Road, buses at the school gates to Whitby. Come and explore Whitby's fascinating and historic streets and waterfront. The site is close to the Whitby end of the Moor to Sea Cycle Route with links to Scarborough and Pickering. For walkers the Cleveland Way coastal path is nearby. Visit Goathland where Heartbeat is filmed, or travel on the North Yorkshire Moors Railway.

Directions: From Scarborough on A171, on entering Whitby, after Lay-by and 30mph. Sign, turn left into Eskdale Road and the school is on the left. From Guisborough or Pickering on A171, enter Whitby and continue on the Scarborough road, cross the new Esk Bridge and continue up the hill to the top of Stainsacre Lane. Eskdale Road is on the right, before the industrial estate.

Post code YO22 4HS. Limit of 25 vans.

17th - 22nd August (5 nights).Shoreham AirShow.Shoreham by Sea, West Sussex.

Emergency Tel. No.07999571461 (Mobile).

Rally Marshals:Shirley & Chris Sturgeon &Theresa & Dave Smith.

Site Fee:£3.00 per night Rally fee: £ 2.40 (Incl.VAT). Airshow tickets £28.00 per adult,£12.00 per child (Covers both days).

No Electricity.Green field site with tap and Elsan point.

Saturday evening buffet meal available@ £5.50 per person (Incl.VAT) payable in advance.

Rally slips and cheques payable to A.N.Fowler,20 Hawkins Close, Shoreham by Sea,West Sussex.BN43 6TL. Tel.No. 01273594479.

Send SAE if confirmation of booking required.

Sorry no dogs allowed

Attractions: 2 day Airshow with on ground entertainment,cycle rides from site.

Directions:On A27 between Brighton and Worthing leave the A27 at traffic lights opposite Sussex Pad Hotel.Turn into airport (This is the only entrance for motorhomes).

Sussex Pad hotel post code BN15 0RH.

Please do not arrive before 12 noon Wednesday.

Tues 23th. -Sun 28th August (5 nights) Topsham Rugby Club.Topsham Nr. Exeter Devon

Emergency Tel No. 07890876859 (marshal's mobile)

Rally marshals Elizabeth & Bryn Morgan 44 Mersey Road,Stockport .SK4 3DJ. Home Tel. 0161 432 4869 and Nora & Ven Venables.

Site fees: £8.00 per night. Rally fee: £4.80 for couple = £44.80, £2.40 for singles = £42.40 incl. Vat.

This is a GREEN FIELD SITE (no electricity). We will be able to use the club's toilet facilities during the day.

Please send cheques to the address above payable to B.Morgan together with a rally slip and self-addressed envelope (we will put the stamp on).Directions and confirmation of booking will then be sent to you.

We plan to devise a roster so we can use the club's communal shower room (very basic).

Dogs are allowed but they must be on a lead at all times and exercised off the site.NB Please say on rally slip if you are bringing a dog.

The rugby club may have functions on whilst we are there.There may also be a cricket match played on the far wicket.

We hope to organise an al fresco "Bring your own meal" one evening.

Attractions: Topsham is a delightful small town situated on the River Exe. Topsham Town Fair Week coincides with our rally. The town has an historic quay; ferries across the river and an excellent bus and train service to Exmouth, Exeter City and beyond so if you have an English concessionary bus pass bring it with you. The town has a good range of shops, eating-places, pubs and an open air heated swimming pool. Within walking distance is the River Clyst that has a nature reserve that is popular with bird watchers. Dartmoor National Park is a short drive away. The rugby club is 250 yards from the town.

Possible limit of 35 vans.

1st September - 6th September (5 nights) Faversham Hop Festival .

Emergency Tel. No. 07818 006733. Marshal's mobile.

Painters Farm Painters Forstal Ospringe Faversham Kent ME13 0EG.

Rally Marshalls Barbara & Al Buckett Mo & Mike Valentine.

Site Fees £17.50 in total for 5 nights.

Rally Fee £ 2.40 per couple or £ 1.40 singles.

Dogs on leads welcome.

Rally slips & cheques payable to A Buckett please with a SAE for reply and directions

Mr A Buckett , 16 St Margarets Drive ,Walmer Deal ,Kent CT14 7UJ. Telephone number 01304 369149.

This is a green field site surrounded by orchards and countryside. A pub within 5 minutes walk serves good food. There is a nature reserve within 5 minutes walk. The Faversham Hop Festival is on the Saturday & Sunday. It includes lots of music ie Jazz Bands Folk Dancers Morris Dancers Pearly Kings & Queens etc..

There are stalls and eateries all along the streets of the town. Parking for motorhomes nearby. Canterbury is about 20 minutes away and has a Park and Ride for motorhomes to get into the city. This rally could be a good tag on to either end of a holiday in France.

Rally starts at 12 noon. Please do not arrive before this time.

8th - 12th September Motorhome & US RV Show, Shepton Mallett, Somerset.

Emergency Tel.No. 0777 557 0182 Marshals' mobile.

Rally Marshals: Jan & Vic Hicklin, Eirwen & Ben Cox. & Margaret & Bob Cleaver.

Site Fee: Special Club prices. Arrive Thursday £33.00 Friday onwards £28.00.

Rally Fee: £2.35 (Incl.VAT). Send rally fee with rally slip & SAE for Show application form to Mrs. J. Hicklin, 381 Manor Road, Brimington, Chesterfield, Derbyshire. S43 1PP. Tel.No. 01246 236 157 **by 24th August. Show application forms to be returned to the organisers, Stone Leisure, by 31st August.**

12th - 19th September (7 nights). Holiday Resort Unity, Brean Sands, Somerset.

Emergency Tel.No. 01278 784524 home with answer phone 07711375323 mobile

Rally Marshals, Linda and Brian Ellis.

Site fee £12.50 per night includes electric and club passes. Plus £2.50 Rally Fee Includes VAT.

Send Rally slips with full payment to:- Brian Ellis, 52 Golf Links Road, Burnham On Sea, Somerset TA8 2PP. Tel.No. 01278784524.

This is a new rally which we have purposely slotted in between the motor caravan show at The Royal Bath and West Show Ground Shepton Mallet and the Little Cotton C.P Dartmouth Devon. Unity Holiday resort is about 26 miles from the showground and 92 miles from Little Cotton Dartmouth. So anyone wishing to extend their break or use this as a stop over on route to Devon may find this convenient.

Alternatively, Unity Holiday Resort is a full facility site in an area well worth exploring and would make an ideal September break.

It is ideal for walking with 7 miles of beach, and the Brean Downs, or for cycling as the area is fairly flat, or use the local buses to Burnham On Sea and Weston Super Mare.

Dogs are welcome on this site

The rally starts midday Monday 12th September, And ends midday Monday 19th September

Directions.: M5 to Jct 22 Burnham On Sea.

Cross straight over A38 heading to Burnham On Sea, Cross Tesco Island, then at mini island, turn right Berrow /Brean. Follow this road for about 4 miles, to Brean, site is on the right.

19th to 24th September 2011 (5 Nights) Autumn in Dartmouth at Little Cotton.

Caravan Park Dartmouth. TQ6 0LB

Why not come and join us for 5 nights now all the holiday makers have gone home, and enjoy all that this area has to offer.

Rally Marshals:- Rita & John Tubb,

Site fees £12.50 per night inclusive of electric and VAT. Rally Fee £3 inclusive of VAT.

Send your application slips and a cheque for £65.50 payable to Rita Tubb together with **SAE or E-mail address** for reply and directions to 70 Charnwood Crescent, Chandlers Ford, Hampshire, SO53 5QL.

Telephone No. 023 8026 7294 or Mobile 07754 761423.

The site has excellent facilities, inc. disabled.

Dogs are welcome but **must** use the doggy walk, and be kept on a lead at all times whilst on site.

The area has a good bus service, down into Dartmouth or venture further afield to Kingbridge, Totnes, Torquay.

You can cross the ferry to Kingswear and catch the steam train to Paignton, or the bus to Brixham.

You can enjoy a boat trip up the River Dart to Totnes or out to sea.

There are also various NT properties in the area to visit. Remember to bring your Bus Pass.

Please do not arrive before noon on the day of the rally.

If you wish to extend your stay either before or after the rally please contact the site direct on 01803 832558.

Web site- www.littlecotton.co.uk

22nd -25th .September. The Motorhome Show,Season Finale, Lincoln Showground.

Emergency Tel.No. 07922049714

Rally Marshals:Pauline & Neil Rogers, & Yvonne & Stuart Wood.

Please use the booking form enclosed in the July Newsletter if possible. If you use a form from other magazines please mark the form ASOC and note the **special Club site fees:Arrive Thursday:£39, arrive Friday £36, arrive Saturday £33.All bookings for the Saturday evening entertainment must be made with Warners when returning the application form to the organisers, by Friday,2nd.September, if you wish to rally with the Club.**

*******Then you must also complete a Club rally slip, (this also applies to internet bookings).** Return it,with the Rally Fee of £2.40 couples,£1.70 singles (both

inclusive of VAT) to: N.C. & P. Rogers, 3 Appleby Close,Aldbrough St.John,Richmond, North Yorks.DL11 7TT.Tel.No. 01325 374 540. Cheques payable to N.C.& P.Rogers.

Please collect the *Club* rally information pack from the ASOC marshal before parking

The rally finishes at 12 noon Sunday but you may remain on site until 12 noon Monday.

28th September – 3rd October (5 nights) ACCEO National Rally, Towester Racecourse, Northants

This will be a rally at the ACCEO National Rally, Towester Racecourse, London Road, Towester, Northants, NN12 6LB. Organisers (on behalf of ACCEO) are the Coachman Owners Club.

ASOC Rally Marshals : Pat and David Mayne.

This is a **Greenfield site** with no electricity 1½ miles from Towester town centre, nearest bus stop 1 ¼ miles. Market town with buses to Milton Keynes.

ASOC Marshal site emergency phone 07964 532936. Cost per unit, Friday & Saturday £17.00, additional nights Wednesday/Thursday/Sunday @ £7.50 per night.

Friday and Saturday entertainment pass £10 each adult. **Attractions:** Hall for Friday night meet and greet with music, Saturday night show "Super Trouper" (Abba tribute Act) and close up magic with "Simply Magic" and on Sunday morning the grand raffle.

Please note that all ASOC bookings must be made by the ASOC Rally Marshal on one ACCEO booking form therefore: applications on ASOC rally slip (indicate if entertainment pass required). Cheque for Rally and Entertainment with slip to Mr D Mayne, 27 Mentmore Rd, Linslade, Leighton Buzzard, Beds. LU7 2NY by 30th August 2011.

We depend on volunteers within the Club to act as Rally Marshals. If you know of a suitable site why not think about running a rally. It is not difficult & help is available. Committee members are also available to assist if required.

A "Guide to New/Possible Marshals" is available. If you would like one please contact me.

I have some sites that have offered a rally site, they have not been vetted as to suitability for rallies, please ask if interested.

It is important that all potential rally dates and venues are checked with me first as unless they are approved by the Club, there will be no Public Liability Insurance.

Neil C. Rogers
3 Appleby Close,
Aldbrough St. John,
Richmond,
North Yorks,
DL11 7TT.
Tel./Fax. No. 01325 374 540
E-Mail. ncr@mypostoffice.co.uk

F&S	17.00
W,T,S	22.50
Ent	20.00
	<hr/>
	£59.50

E & OE.

Article relating to Front page Picture

Bentley Rally

Thank you Baz and Dorothy and Mike and Mo for organising the rally at Bentley which we thoroughly enjoyed. The facilities at the Wildfowl and Motor Museum proved very interesting and the addition of a wedding at the house plus the Rover Car Meet in the grounds afforded added interest.

The brunch on Saturday morning gave Alan the opportunity, ably assisted by Eileen and others, to display his talent of Auto-Sleeper **Masterchef of Bentley 2011**.

Pauline and Les Henman 5635

Little Cotton – Dartmouth Rally 4th - 9th May 2011

We have been touring caravanners for many, many years but changed to our first motorhome last summer. We were determined to use the motorhome more than we did the caravan so we attended our first ASOC rally at Little Cotton. We were full of trepidation as to what it would be like – Would we like the people? – Would it be too organised and formal? – Would we feel like outsiders? – Not a bit of it! John and Rita Tubb had taken over as rally marshals at the last minute and did a brilliant job! Ably supported by Steve and Pam – his magic show was very funny!!!! We were made to feel very welcome by everyone. Coffee was arranged for the evening get-together and we, along with two other couples, were introduced to the regulars. It was like meeting up with old friends. We had coffee every evening, fish and chips (for 60!!!!) on the second night and a raffle on the final night. Everyone exchanged their views on where they had been during the day – very useful when it's your first time in an area. The site was perfect, exceptionally clean – fabulous bus service from the gate and a new Sainburys directly opposite.

We would definitely encourage other members to attend as many rallies as they can – we certainly will be booking more. Thanks again to Tom and Rita – hope to see you in September.

Pat and Les Udale, Gatley, Cheshire.

Chairman's Chat

This newsletter has been produced by our assistant editor Dudley Woodhams. I would like give my thanks to Dudley and his wife for taking on the production of the next two months Newsletters, I know that the style may be different but the content will be the same as ever!

The 2011 season is now well underway and I have attended two rallies both well attended and I note that several are now full; I do hope that you have been able to take to the road and enjoy the fine weather.

I would like to remind members that the new road rules for France are now in place.

If a pedestrian wishes to cross the road, he or she must use the appropriate crossing, if there is one within 50 metres. (An "appropriate" crossing is a marked crossing or traffic-light controlled crossing.)

Failure to use such a crossing is jaywalking and carries a fine of €4.

If there is no appropriate crossing within 50 metres, the pedestrian must indicate an intention to cross the road by either stepping onto the road from the pavement or by making a clear hand signal. In this situation **pedestrians must be given precedence by the motorist**. Failure by the motorist to do so risks a fine of €135. *Please be advised and do not get caught out!*

The British Credit Card companies have now implemented "anti-fraud" systems which pick up "unusual usage" of your credit card. Unfortunately, this system may lead them to 'not approve' transactions which are outside your normal usage area. Therefore inform your bank or credit card company of the countries that you are visiting, thus avoiding the embarrassment of having your purchase rejected.

Members may have seen "on-line" or heard that there are two new web sites and may be also found on 'face book'. www.autosleepersownersclub.co.uk this link currently is not recognised and www.autosleepersforum.co.uk neither of which your committee has any input.

Due to a very sad happening on a recent rally, would members please assist all of the Marshalls by giving a "LIVE" contact telephone number, a name and an address, so that in such an emergency, help can be sought and news passed to whom ever.

Mo and I are off to Solvenia tomorrow (beginning of June) for a month, back just in time to assist with the Abingdon Rally. I should then be able to give you details of whether you should make the effort to visit the area.

And finally, on behalf of the club I would like to thank Geoff Scott of Auto-sleepers for the celebratory very smart Key-Fobs given out at the National Rally. If you have not claimed yours yet, make haste to any Marquis dealership or other main A-S dealership and ask for one.

Mike Valentine

Clubman Ramblings

Just returned home after 20 nights away in our Clubman. Went to the Peterborough Show and AGM at Newark. Our thanks to Pauline and Neil, Nora and her team – best AGM ever – enjoy your retirement Nora. At Peterborough and the AGM lots of faces were missing through ill health, we wish you all a speedy recovery and look forward to seeing you all again very soon.

Over the Easter we had booked 5 nights on a CL site at Marton. Just water and elsan points for £5 a night. Weather so good we decided to stay another 2 nights so 7 in all to be told you now get one night free. There is a small shop 2 minutes' walk away and buses to Gainsborough and Lincoln. If you want peace and quiet look it up. Manor House, Marton nr Gainsborough. Caravan Club Book. You will be made very welcome. Owners have a motorhome but not an AutoSleeper.

Safe and happy camping to all.

Sylvia and Norman Bryce 864

Technical Group & Website



Baz Wellard
Chairman Technical Group & Webmaster

Digital Television

Twenty two BBC transmitters have now switched over entirely to digital, and the remaining transmitters are planned to change over during the next year.

With a poor analogue signal it is still possible to receive a picture (albeit snowy), however, with a poor digital signal the screen will simply go blank. Motorhome omni-directional aerials may, therefore, need to be superseded by directional ones. [See *Ideas Sheet No. 177 as an example*].

It will be useful therefore to have a rough idea where the transmitters are, and they can be identified at www.bbc.co.uk/reception/transmitters/tv/. Alternatively look where fellow campers, or local aerials point, and follow suit.

The good news is that when the transmitters change to digital the signal strength will be increased. You will, of course, need to have a digital receiver or a 'set-top-box'!

A-S Recall: Auto Sleepers have advised of a recall for some Cotswolds that may require a change of position of the fog light. It is not a safety related issue but just something that needs attention. A list of build numbers and number plates are on the club website – click on "Technical > Recalls". Contact your dealer for more information.

Vehicle reviews: Now available: - Topaz 2011 & Kemerton 2011

Ideas Sheets:

- No. 210 Extra support handle on rear door – coachbuilts
- No. 211 Drying & storage of wet shoes – coachbuilts

No. 212 Repairs to 'door-fitted' waste bin – some
Executives & Talismans

Website Updates:-

- **No. 06/11 contained:-**
 - o **AGM & National** – AGM summary; new Sub-Committee and photos
 - o **Committee** – Committee members for 2011/2012
 - o **Rally list:-**
 - ✦ Spare rally application form (*down-loadable*).
 - ✦ Emberton rally cancelled.
 - ✦ **No. 06a/11 contained:-**
 - o **Technical** – A~S recall for some Cotswolds – see above.
 - o **Rallies-**
 - ✦ Cartmel rally report & photos
 - Bentley rally report & photos

LEZ: Further to my May article on the London Emission Zone I should add that the legislation is only applicable to diesel engines. Petrol engines are not included.

Tyre Pressures: - I am regularly asked for advice on tyre pressures which I cannot provide. However the last advice from A~S was:- "For tyre pressures use the figure quoted by the base vehicle manufacturer for the maximum fully laden weight. If using the vehicle below this weight have the vehicle weighed and then seek advice from the tyre manufacturer and request they confirm it in writing. If the vehicle loading is changed and hence overall weight changes then different tyre pressures will be required".
[See Club website FAQ No. 15 for full details].

I've had both my vans weighed (*with Dorothy and loaded as for touring*), and not only did I get advice on pressures but it also checked that my motorhome was not overweight and thus not being driven illegally.

And finally: Please - remember to quote your membership number on all Committee communications.

Comments on June's Issue

I would like to comment on two letters in the June issue, firstly on Snoopers by Roger Spensley I am aware of the Snooper GPS which can be set up to suit the size of your van, but they are expensive at between £350 and £580, I was of course referring to the common or garden Garmin or TomTom type instruments at around £100, which most people will have, for example on a recent trip from Wokingham to Newbury when management got stroppy and refused to navigate, the GPS took us off the motorway and back on twice, god knows why.

On the bit by David Garraway on battery charging. I use during the summer months a 7 day time switch set to come on for ½ hour 3 times a week, on the mains end of my hook up lead when hooked up at home. These switches are not as common as the 24 hour version but they look similar and can be found if you look hard enough.

In the winter this is overridden IE permanently **on** to run the electric section of the Truma heater with the control set very low so that it only comes on if the temperature drops to near freezing, I can do this because in the bottom of the wardrobe on our 2005 Lancashire there is a plastic cover which when removed gives access to the charger switch (other models may have this facility) which is switched **off** most of the time and only switched **on** 1 night or day per week, this of course gives enough charge to keep the batteries up without over charging.

In addition I do give the van a run about once a fortnight to prevent lazy van syndrome and to keep rust build up on the brake discs to a minimum though I do realise that not everyone can do this.

Brian Murphy

Education....

A man is stopped by the police at midnight and asked where he's going.

"I'm on the way to listen to a lecture about the effects of alcohol and drug abuse on the human body."

The policeman asks. "Really? And who's going to give a lecture at this time of night?"

"My wife"

WELCOME NEW MEMBER



David & Joyce Hymas	Colchester	Clubman
Mick Mickleburgh & Heidi Goodwin	Hitchin	Sigma
Ian & Linda Brockbank	Wigton	Gatcombe
Rob & Lyn Phillips	Westward Ho!	Duetto
David & Sylvia Wright	Ferndown	Vivanti 2
Paul & Barbara Taylor	Southport	Executive
Keith Manning	Brinklow	Symphony
Peter Smethurst	Bolton	Clubman
Sally Spencer & John Milnes	Chester	Duetto
Brian & Annetter Jennings	Wroxall	Rapport
Ken & Mary Doran	Spalding	Gloucester
John & Theresa Collins	Wickford	Topaz
Sally Dennett-Thorpe	Chelwood Gate	Executive
Kevin & Christine Dunmore	Newquay	Gloucester
John & Pearl Ellice	London	Gloucester
Rob & Jenny Jordan	Bedford	Cotswold
Mel & Ann Larkins	Redruth	Pollensa
Les & Jen Moore	Epsom	Sussex
Keith Patty	Harrow	Warwick
Brian & Angela Savage	Worthing	Duetto
Derek Barber	Dartford	Symbol
Ronald & Sylvia Bond	Eastbourne	Harmony
Mervyn & Margaret Collings	Lostwithiel	Broadway
Brian & Doris Corkindale	Largs	Executive
Alan & Lily Knowles	Pevensey Bay	Trooper
Ray & Joan Prest	Barnsley	Executive
Tricia Share	Northampton	Gloucester
Denis & Angela Stiles	Southampton	Dorset
Chris & Sue Beechey	Milton Keynes	Executive
Bob & Adeana Raper	Sheffield	Rigid side pop top

WELCOME NEW MEMBER Continued



Robin & Angela Tinston	Royston	Clubman
Eddy & Pauline Boraston	Worcester	Lancashire
Peter & Sheilagh Grimshaw	Rochdale	Duetto
Steve & Janet Guesford	Milton Keynes	Sandhurst
Denise Laing & Barbara Howden Richards	Wilby	Legend
John & Susan Newman	Hythe	Cotswold
Chander & Dianne Sharma	Brighton	Clubman
Graham & Linda Rouse	Leicester	Nuevo
Peter & Georgina Bacon	Woodbridge	Dorset
David & Barbara Irwin	Redruth	Sigma
Barry & Gill Daymond	Bala	Broadway
Tom & Jan Turner	Seaford	Sandhurst
Dan & Margaret Blake	Toddington	Cotswold
Tony & Val Carroll	Carrbrook	Suffolk
Martin & Jenny Dines	Colchester	Gatcombe
Roy & Gill Duncan	Peterborough	Symbol
Graham & Jayne Saunders	Northampton	Broadway
Harry & Judith Wharton	Abingdon	Lancashire
Frank & Beryl Lutman	Titchfield	Executive
David Springett	Colchester	Broadway
Harry & Vera Henderson	Dungannon	Berkshire
Peter & Denise Johnson	Northampton	Northants
John Camm & Valerie Jenkins	Darfield	Hampshire
David Hearn & Sally Soulsby	Mullion	Executive
John & Jo Adams	Radstock	Pollensa
Peter & Jo Milne	Poole	Nuevo



Thanks for the Donations

We were Auto sleeper owners until recently and had to sell our beloved Rambler, however the reason for contacting you is that we have a complete set of tailor made curtains by Regal furnishings Dusky blue in colour, we are led to believe that these will only fit a Rambler, and we wondered if they would be of any use to any of your members, as you know these sort of items are too good to be just thrown away and I'm sure someone somewhere would like them..

Many Thanks for your time

Graham Tassell
grahamtassell999@gmail.com

VW Trident 1995 T4 (2.4 Diesel) 40 mpg, 81,300 miles. Full service history, in very good condition throughout. Just serviced and full MOT. Owners elderly couple retiring for health reasons. No children or pets. Free standing

awning. Two new tyres and all instruction manuals and records. Full Auto Sleeper specifications ready to take you anywhere. £9,500.

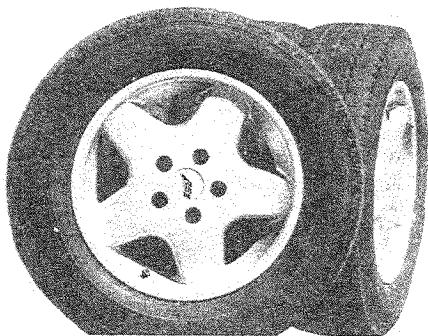
Contact John Flynn 01273 301792
(Brighton)

Sunsolo 12v 13w Solar Panel in Briefcase, v.g.c. in original packing £30.00.

Maurice Pepper 01329 236586
(Gosport Hants.)

Set of four 1 year old Alloy Wheels for VW Transporter T4, fitted with 2 Continental Vanco and 2 Michelin Agilis 81 195/70 R15C are fit for a further 5 to 6,000 miles. £195 or near offer. Photograph included.

P Edwards 07981 463559 Mobile
(Bournemouth)



Contents			
From the Editor	2	Peugeot Radios Strike Again	8
Walking in France	2	Information	9
Normal ASOC Welcome	3	Cartmerfil Rally Report	9
Regalia Price Update	3	Asoc and Caravans	10
More on Battery Charging	4	Bently Rally, Little Cotton	11
For those with a Delicate disposition	4	Chairman's Chat	12
Helps and Tips	5	Clubman Ramblings	13
Motor Homes and Caravans	5	Technical	14
A Plea for your Expertise	6	Comments on June's Issue, Education	16
Charity 2011		Welcome New Members	18
		Fore Sale	19

Committee Members

President	Charles Trevelyan	
Chairman	Mike Valentine	02392 482818
Secretary	John Osland-Jones	01217 448065
Treasurer	Peter Brown	07771 827711
Vice-Chairman	Andy Cavell	01635 201976
Rally Co-ordinator	Neil Rogers	01325 374540
Webmaster & Chair, Tech.Group	Baz Wellard	01329 231259
Regalia Officer	John Jones	01623 627903
Newsletter Editor	Peter Brown	07771 827711
Membership Secretary	Jill Bertlin	01539 534500
Chairman, AGM Sub-Committee	Al Bucket	01304 369149
Minutes Secretary	Alan Waugh	01392 271955

Any item appearing in this Newsletter may be freely used by other publications. Please acknowledge both author and source.

Items for the Newsletter **MUST** reach your Editor by the **TENTH** of the month. You may post them to 5 Kenilworth Walk, Cheadle, Stoke-on-Trent ST10 1WA or e-mail to petercb1952-asocnews@yahoo.co.uk. Or when notified to, send to Deputy Editor **Dudley Woodhams** at 83 Langdale Place, Newton Aycliffe, Co. Durham DL5 7DY or e-mail to snowgoose1@hotmail.co.uk. Jill Bertlin The Rockeries, Sunny Terrace, Lindale, Grange-over-Sands, Cumbria, LA11 6 LQ. e-mail jbertlin@aol.com. Baz Wellard 18 Greenwood Close, Fareham, Hants PO16 7UF E-mail baz.wellard@virgin.net.

The Editor reserves the right to edit or omit items. Advertisements for items to be sold or wanted by members are published free of charge, however, small donations to Club funds are appreciated and will be acknowledged. No guarantee can be given that any item will appear in the next, or any, issue of the Newsletter. Cheques should be made payable to 'Auto-Sleeper Owners' Club' and NOT TO ASOC and send to the Editor.

IMPORTANT: Contributions from Members are published in good faith in the hope that they will prove useful or interesting. All reasonable care has been taken to ensure accuracy but no modification or suggestion has been tested by the Company, the Club or your Editor. Therefore no warranties are expressed or implied nor indemnities given. You try them out at your own risk.