



www.asoc.fsnet.co.uk

AUTO-SLEEPER OWNERS' CLUB

A Company Limited by Guarantee
Registered Office: Orchard Works, Willersey, Nr. Broadway Worcs. WR12 7QF.
Registered No: 4616969



*ASOC Special 24 Feb 2010
Dean Forest Railway*

NEWSLETTER 259

April 2010

From the Editor ^(S)

VERY IMPORTANT This issue of the Newsletter contains the Agenda for the 2010 AGM, a proposed amendment to the Club's Articles of Association and an item on Proxy Representation that includes a formal notice to you of your right to appoint a Proxy as your representative at the 2010 AGM. Other documents relevant to the AGM are enclosed in the envelope with the Newsletter.

Once again **Dudley Woodhams** has agreed to produce the newsletters for July and August this year, so please make sure you send your articles directly to him by 10th June for the July edition and by 10th July for the August edition.

We really are **struggling** for material for the Newsletter on a month by month basis (although we are approaching the time of year when we usually get a bit more) and I am running out of ideas. If you send me some ideas of what you would like to read about then I may be able to do the research and write an article on that topic (or persuade someone who is better qualified on that topic to do it for me). We have not had a contribution from the AS factory for a while despite their best intentions—maybe they could make some comment on LED lighting, a topic that is raised later in this issue.

Attending the National? Delays on A46 In September last year, Di Leader wrote to advise me of roadworks on the A46 between the M1 nr Leicester and Newark. The works are planned to last till 2012 and Di expects that at certain times of day delays could be lengthy. I've just checked the Traffic England website and they say you should expect delays totalling up to 30 min on that stretch of road.

Looking forward to seeing many of you at the National

Chris and Peter

THE AUTO-SLEEPER OWNERS' CLUB

AGENDA FOR THE TWENTY-FIRST ANNUAL GENERAL MEETING

To be held on Saturday May 1st 2010
At the Cedric Ford Pavilion, Newark and Nottinghamshire
Agricultural Society Showground, Newark

Chairman's welcome to the Seventh Annual General Meeting of the Club
as a registered Company Limited by Guarantee.

- ✓1. Apologies.
- ✓2. Appointment of Tellers.
- ? 3. Appointment of a Proxy.
- ✓4. Minutes of the Twentieth Annual General Meeting and Open Forum 2009.
- ✓5. Committee Reports for 2009-2010.
- ✓6. Accounts for year ending 31st December 2009.
- ✓7. Annual Subscriptions.
- ✓8. Election of Honorary Examiner for the accounts.
- ✓9. Committee elections. There are six vacancies on the committee and the following Nominations have been received.

Al Buckett	5829
Andy Cavell	3752
John Jones	2902
John Osland-Jones	0948
Alan Waugh	4494
Baz Wellard	1501
- ✓10. Proxy Voting. Amendment to clause 35 of Articles of Association. (Please read the amendment on the next page)
- ✓11. Any other competent business.

RESOLUTION TO CHANGE THE ARTICLES OF ASSOCIATION IN RESPECT OF CLAUSE 35 VOTES OF MEMBERS

As a result of the implementation of the 'Companies Act 2006' each individual member is entitled to appoint a person as their Proxy during a Club General Meeting.

Existing Clause 35 reads "On a show of hands or poll, every member who is present in person shall have one vote. Neither postal votes nor voting by proxy shall be permitted

In order that this new entitlement for members can be enshrined in the Clubs Articles of Association the Committee propose that Clause 35 is amended to;

35. On a show of hands, every member who is present in person or by proxy shall have one vote. On a poll every member present in person or by proxy shall have one vote. Postal votes shall not be permitted.

35(a) The appointment of a proxy shall be in writing in any form which the Committee may from time to time approve.

35(b) A proxy attending a General Meeting can only accept appointments from a maximum of two members.

35(c) A notice stating how a proxy may be appointed, and the date by which this appointment is to be received by the Secretary, shall be sent to members with the notice calling the General Meeting. Any appointment of a proxy not received by the due date shall be invalid.

35(d) If, after appointing a proxy, a member wishes to withdraw that appointment, he must notify the Secretary in writing before the commencement of the meeting.

REPRESENTATION BY PROXY

As you will have seen on the agenda for the AGM there is the subject of Appointment of a Proxy.

Now are you sitting comfortably, then I'll begin, to try and explain why.

When the Club became a Company Limited by Guarantee in 2002, it followed the requirements of the Companies Act 1985 and 1989. These Acts did not allow for proxy representation in a company with no share capital.

The government in its wisdom then produced the Companies Act 2006. This Act is the longest Act to have been passed having 1300 sections, 47 parts and 16 schedules, with the intention of cutting red tape and simplifying the running of companies!!!!

Section 324 of the Act, Right to appoint a proxy, states, "a member of a company is entitled to appoint another person as his proxy to exercise all or any of his rights to attend and speak at a meeting of the company". This section overrules anything stated in the Articles of Association. So we have to change to comply with the law.

What this means for the Club, is that a member can if they wish after filing a Proxy Form with the Club Secretary by a due date, appoint a person to represent them at an AGM or other General Meeting.

As this is a legal requirement you are hereby notified that you have a right to appoint a proxy to participate in the 2010 General Meeting, on your behalf, using the Proxy Form enclosed, that must be received at the address given on the Proxy form before 10.30 am Thursday 29th April 2010.

As you can see this change though important, will not alter the running of the Club. It will only mean a bit more work for the Club Secretary (that's what I'm here for) and at the AGM the voting procedure may take a little longer while we count the votes.

I hope this has been informative and that you should now go and make a cup of tea, you deserve a break.

John Osland-Jones

The National Rally

CHARITY 2010

Firstly, I would like to thank everyone who sent in nominations to be chosen as our Charity of the year at the National Rally in April/May 2010; and I must say we had the best response ever this year.

Out of all the nominations received the one chosen was sent in by Ven Venables (0104) and it is **Max Appeal** which supports those affected by DiGeorge Syndrome and their families. These are a complex and varied group of conditions. Babies and young children may have complex heart defects requiring surgery.

If you need any more information on Max Appeal you can visit their website at www.maxappeal.org.uk or freephone 0800 389 1049.

Once again thank you all.

John Jones

You may be interested in the process by which the Committee make the choice of charity.

John collates all the nominations and supporting documents received and then deletes all trace of the nominator, numbering them instead. The packs of anonymous documentation are sent to the committee members for their consideration. During a committee meeting each committee member votes for one charity and the charity with most votes is selected. It is only after that process is complete that the rest of the committee are advised by John who it was that made the successful nomination

Peter Brown

CAKE COMPETITION

Cider Fruit Cake

¼ pint Cider
225g (8 oz) butter
225g (8 oz) soft brown sugar
4 eggs beaten
275g (10 oz) self raising flour
75g (3 oz) ground almonds
75g (3 oz) glacé cherries chopped
500g (1 lb 2 oz) mixed dried fruit



Method

Soak the fruit in the cider overnight if possible.
Cream the butter, sugar and eggs. Add the flour and ground almonds.
Stir in the cherries and soaked mixed fruit. Pour into a well lined 8 inch round cake tin.

Bake in a moderate oven for approximately 1¼ - 1½ hours.

Place the cake on a cardboard plate and cover with cling film.

**Please bring your cake to the Stuart Goodwin Hall on Friday 30th
April between 10am and 4pm**

First Prize	£30
Second Prize	£20
Third Prize	£10

All the cakes will be auctioned off for the chosen charity.



Chairman's Chat

I trust that all of those members who attended the exhibition at the NEC viewed everything, were not disappointed with what they saw and did not overspend!!!

I understand that ASG had a very successful exhibition and have sold their production allocation for this year. Whilst wandering around the show I overheard numerous comments regarding the quality of the latest AS vans being better than that of other makes; this has to be good news, with member's comments and suggestions being adopted. I noticed too that some of the competition had copied several of the AS ideas, particularly in the bathroom area, ideas that I know some of our members had put forward, did someone say they never listen?

I was recently discussing with a potential rally marshal the ins and outs of running a rally, particularly how to budget the costs and how to handle the raffle. I explained that the club does not expect you to make a profit but nor does it expect you to make a loss. The whole idea is to pitch the costs so that a small profit is made or at least a break even. The raffle, though not compulsory, may be used to defray the expenses should the rally costs look like running into difficulties due to cancellations or bad weather for example. The profits from these raffles are kept separate from other club monies and your committee decides upon the percentage, usually about 50%, being added to the overall donation given to the chosen charity at the National Rally. This charity is chosen each year by the committee from submissions made by members who have connections with the various charities. I do hope that this will help new members understand what happens to the raffle profits and where some of the donation money comes from.

It now leaves me just to wish you all a Happy and Peaceful Easter.
See you at the National Rally.

Mike Valentine

FoldTuk Bakeware

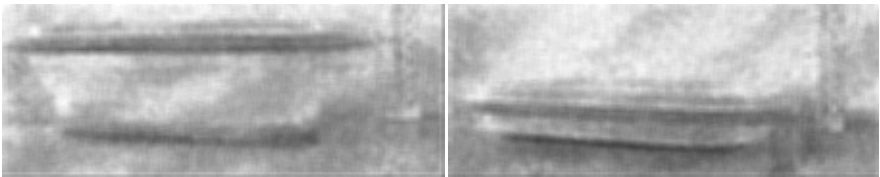
I read about this product in a magazine, bought one and am impressed. FoldTuk is a collapsible bakeware product with the non-stick durability of silicone and freezer-to-oven-to-table convenience that folds flat for storage.

The product uses a silicone formulation called Ceramber™ that retains the non-stick properties of silicone but provides added rigid strength where needed. The result is a sturdy bottom and top rim with a flexible folding center band.

FoldTuk silicone flexible bakeware is available in four shapes: rectangular, round, oval, and square, and two sizes: 4-cup (32 oz./0.94L) and 6-cup (48 oz., 1.42L).

- Cook, Serve, and Store – From freezer to oven to fridge. Dishwasher safe.
- Collapsibility – Fully collapsed, FoldTuk measures only 1 inch tall - perfect for stacking and storing.
- Natural Non-Stick Surface – "FoldTuk's proprietary material has a high surface tension and low coefficient of friction which provides a natural safe non-stick surface." No Teflon, so no PTFE or PFOA

We bought a 4 cup rectangular to try (24cm x 16cm) at £7.50 plus £2.99 P&P. The UK contact is Liz Boniface who can be contacted via UKenquiries@foldtuk.com or 01474 872827. <http://www.foldtukbakeware.com/product.php>



I made a cottage pie and froze it in the dish. Left it in the van freezer for a few days. During the Whitemead rally it was allowed to defrost and then heated in the oven. Whilst away we also used the dish to cook a casserole and hot pot in the van oven. We're very pleased with it so far but be warned – it looks like plastic but in the oven it gets as hot as metal!!!

Peter Brown

EHIC RENEWALS

As we have been reminded in earlier issues of the Newsletter our EHIC cards have a renewal date. If your EHIC card is coming up for renewal you can do it online by following the simple steps and a new card should be with you in seven days.

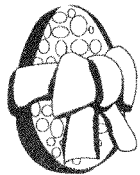
However, take care when going to a EHIC renewal site as some private organisations which may look like the official NHS site will charge you £9.95 for forwarding your details to the NHS. I discovered that the first two sites listed were commercial sites. To go to the free NHS renewal site go to: www.ehic.org.uk/ Make sure you select the site that has org.uk in it's address.

Liz Morgan

How many appliances can you use in the van at any one time?

On my travels around the UK and the continent, I am continually amazed at the number of different electrical appliances that are available for use in our vans. From time to time in the past we have been troubled with the electricity tripping out particularly at busy times! Most caravan sites in the UK supply 16amps at the connection post, on the continent however you will usually be given a choice of power, either 2-4-6 or 10amps and maybe 12, for which you will pay accordingly.





April 2010
Rally Supplement.

Please carry your ASOC membership cards when attending rallies.

All rallies start at 12 noon unless otherwise stated in this supplement.

Will marshals please try to put the post code in the rally site address.

If you wish to bring a car, trailer or tent to a rally please check with the marshals first.

Applications for rallies must be made on ASOC rally slips by post. The only exception is the National & AGM Rally.

******* New Rally. 7th. – 11th. October (4 nights) Conkers Camping & Caravanning Club Site, National Forest, Derbyshire.**

29th. April – 3rd. May National Rally & A.G.M.
Nottinghamshire Showground, Newark.

Please use the application form enclosed with the January Newsletter. The closing date for bookings for meals and camping is 3rd. April.

22nd -25th.April National Motorhome Show,East of England Showground,Peterborough.PE2 6XE.

Emergency Tel.No. 07922049714

Rally Marshals:Pauline & Neil Rogers, & Jean & Ian Sellers.

Please use the booking form enclosed in the February Newsletter if possible.If you use a form from other magazines please mark the form ASOC and note the **special Club site fees:**

Arrive Thursday:£35,arrive Friday £32, arrive Saturday £29.

All bookings for the Saturday evening entertainment must be made with Warners when returning the application form to the organisers, by Thursday 1st.April if you wish to rally with the Club.

*******Then you must also complete a Club rally slip, (this also applies to internet bookings)**

Return it,with the Rally Fee of £2.00 couples,£1.50 singles (both inclusive of VAT) to: N.C. & P. Rogers,3 Appleby Close, Aldbrough St.John,Richmond, North Yorks.DL11 7TT.

Tel.No. 01325 374 540. Cheques payable to N.C.& P.Rogers.

Please collect the *Club* rally information pack from the ASOC marshal before parking.

The rally finishes at 12 noon Sunday but you may remain on site until 12 noon Monday.

6th to 10th May (4 Nights) Little Cotton C.P. Dartmouth.TQ6 0LB.

Site Tel.No.01803.832558 Fax 01803 834887.

Website- www.littlecotton.co.uk

Rally Marshals: Rita & John Tubb.

Site fees:- ***This rally is now fully booked.*** Hard pitch £11.25.,

both fees are per night per unit inclusive of VAT.

Rally fee £2.35 couples and £1.20.singles Minimum booking 3 nights.

Send application slips with cheques payable to R. J. McAllister together with SAE for reply to 'Milesaway' Steart Drive, Burnham on Sea, TA8

1BZ. Telephone numbers are:- 01278 781976 and Mobile

07840076771.

Attractions: This is an immaculate 7.5 acre site having an award winning toilet/shower complex with disabled facilities, dishwashing area, launderette style washing machines, large tumble dryers & ironing boards available.

Dogs are welcome but they **must** use the doggy walk on site and be kept on the lead on site.

There is a well stocked site shop; papers must be ordered the day before. Also very close by are Sainsburys and Lidl. The site is adjacent to the Park & Ride bus service into Dartmouth (tickets available in the camp shop).

This will be the 13th. year of the Dart Music Festival held from Friday 7th to Sunday 9th May. There are plenty of boat trips operating from Dartmouth, either up the River Dart to Totnes or out to sea. Ferries run to Greenway Quay from where you can visit Greenway House & Gardens (NT) one time home of Agatha Christie. There are other NT properties in the area; also two local steam trains, one from Kingswear to Paignton and another from Totnes to Buckfastleigh.

Good bus services – bring your free travel cards! This very good site is in a lovely area of South Devon with much to see and do; if you would like to extend your stay either before or after the rally contact the site owners direct, they will welcome your call.

Please DO NOT arrive before Noon on rally day.

6th. – 13th.June (5 nights).Old Barn C.P.,Nr.Sandown, Isle of Wight. PO36 9PJ.

Emergency Tel.No. 07730212750 -07866621291.

Rally marshals: Ken Bolton & Mac.McArthur.

(Tel.No. 01983875918).

Rally fees (including ferry fares) £145 per unit for 7 nights including electricity.(Incl VAT).

The ferry will be Red Funnel Southampton to East Cowes.Basic ferry charge is for a van 5.5 metres long & 2.25metres high.

Anything higher & longer will be charged extra.Ferries leave Southampton every hour on the hour so when booking put time of departure on rally slip.

Contact the rally marshal before booking for details of package.

Then send an S.A.E. with rally fee made out to K.Bolton, 2
Cherryside,Lake,Sandown,Isle of Wight.PO36 9LU.Tel.No. 01983
402059.

Attractions:Most of the Isle of Wight is an area of outstanding natural
beauty with many attractions.The site is situated on the main Newport
Road between Sandown and Newport.

A Morrisons store is ¼ mile away & opposite the site is a very nice café.
There are bus stops nearby and it is quite easy to get all over the island
by bus,passes accepted.

There are lots of walks nearby and you are in sight of the Isle of Wight
airport,a small private airport with a grass runway.Pleasure flights are
available or you can learn to fly.

Rally starts 12 noon 6th. June,ends 12 noon. 13th.June.

7th - 12th. June (5 nights) Tattershall,Lincolnshire.

The Dream Teams' holiday. Limited to 30 units.

Site behind Tattershall Village Hall.

Water & toilet disposal but NO electrics.

Emergency Tel.No. 07185080442 (Marshal's mobile) Up to 2 days prior
to the event 01354654526.

Site donation £20 for 5 nights per unit(2 persons,extra persons £8).No
reductions for less nights.

This includes Coffee mornings or evenings,freebies,major quiz with star
prizes,pressies for pets(indicate how many and sort of on rally slip).Also

(at no ex

Rally slip

Cambs.P

Please se

love, March,

Local attractions.Hourly buses for woodhall Spa,Boston,Lincoln,
etc.Battle of Britain Museum at R.A.F.Conningsby,subject to flight not
being away on display,Tattershall Castle,Conningsby church.Local shops
5 minutes.Information pack on arrival.

Gates will not be opened until 12 noon.

10th to 20th June (10 nights) 2010 Turckheim, Alsace, France.

Rally Marshals: Angie & Andy Cavell and Dorothy & Baz Wellard.

Emergency
VAT, not r

This rally is now fully booked.

Fee: £17.50 inc.
& cheques.

17th. – 20th. June (3 nights) Riverside C.P.,Stratford upon Avon.CV37 7AF.

Emergency Tel.No_– 07799660641 (Marshals' mobile).

Rally field on commercial site,some electric hook ups available.

Site Fee:£9.00 per night,Electric Hook up;£2.50 per night. Rally

Fee:£2.50.All include VAT.

Rally Slips and Cheques payable to: Sandra Wisely,2 Mount

Pleasant,Bishops Itchington,SOUTHAM,Warwickshire.CV47 2QE.Home

Tel.No.01926 614194.

Please note - Tents,gazebos,windbreaks,generators and disposable
BBQs are not allowed on the site.

Attractions:Riverside Café,club house,free fishing,river taxi to and from
Stratford,riverside walks.Bus stop just outside the entrance to the site.

Directions: Take the B4086 Tiddington Road from the bridge in
Stratford. As you enter the village of Tiddington the Park entrance is on
the **left** hand side opposite the new NFU building, pull into the parks and
follow signs.

Please note Strictly no arrivals before 1400 hrs.

Please remember that if you are attending a rally not on a commercial site then the Club will be using its Exemption Certificate. This certificate is issued by Natural England and similar agencies in Scotland and Wales. Rallies using this certificate must last no longer than 5 nights. If they start at 12 noon then they must finish and the site be cleared by 12 noon on the fifth day. Failure to follow this could lead to the Club losing the certificate. No additional time can be added for setting up or clearing up.

We depend on volunteers within the Club to act as Rally Marshals. If you know of a suitable site why not think about running a rally. It is not difficult & help is available. Committee members are also available to assist if required.

A "Guide to New/Possible Marshals" is available. If you would like one please contact me, details below.

I have some sites that have offered a rally site, they have not been vetted as to suitability for rallies, please ask if interested.

It is important that all potential rally dates and venues are checked with me first as unless they are approved by the Club, there will be no Public Liability Insurance.

Neil C. Rogers
3 Appleby Close,
Aldbrough St. John,
Richmond,
North Yorks,
DL11 7TT.
Tel./Fax. No. 01325 374 540

E-Mail. ncr@mypostoffice.co.uk

E & OE.

This matter got me thinking about the limitations on usage within the van and why we should all use low wattage kettles and heaters, thus helping to make sure that everyone has an uninterrupted supply. I decided to do some research and found a tremendous variation of amperage requirement needed to power the various appliances. I thought that my findings might prove useful, particularly to those people new to our hobby and have therefore listed the main items within the van:

Kettle	2000w (2KW)	approx 8.7amps
Kettle	750 w	approx 3.3amps
Toaster	1300w (1.3KW)	approx 5.6amps
Iron	1300w (1.3KW)	approx 5.6amps
Mircowave	1200w (1.2KW)	approx 5.2amps
Colour TV	50w	approx 0.2amps
Fan heater	1000w (1KW)	approx 4.3amps
Battery charger	100w	approx 0.4amps
Fridge	125w	approx 0.5amps
Table lamp	60w	approx 0.2amps
Blown air heating	1000 - 2000w (1-2KW)	approx 4.3 - 8.7amps
Water boiler	2000w (2KW)	approx 8.7amps
Air-con	1000w (1KW)	approx 4.3 amps

Now walk around your own van, total up how many amps you might use at anyone time and this will tell you how close you are to the limit of the incoming supply and why just at the critical moment the electric goes off!!

I hope that this will stop you being left in the cold or dark one evening or both!

Mo Valentine



Technical Group & Website

Baz Wellard
Chairman, Technical Group & Webmaster



Stopping Cab radios switching off when stationary:

Contrary to previous understanding, it would appear that the Peugeot X250 cab radio 20 minute problem can in fact be overcome.

Three members have kindly contacted me to say that an Auto Electrician has successfully replaced their radios, and one member now feeds his existing radio from the leisure battery.

However Auto~Sleepers have issued a proviso if either of the above options are adopted: - "The Peugeot and Auto~ Sleeper warranty will be invalidated in this respect and is not recommended".

Should you still decide to go ahead, then I strongly advocate you use the services of an experienced Auto-Electrician.

A~S Design & Development:

Along with the Chairman I have been invited to attend informal meetings with the Design and Development Department to see if we can assist them - and for them to inform us - of future advances in Motorhome conception. It is early days yet but following the first meeting this looks like being a very interesting and promising opportunity for both the Club and Auto~Sleepers.

These meetings are in addition to the regular meetings with Geoff Scott CEO ASG, which involve the more current technical, or related, matters.

Model Reviews: All 104 published 'model reviews', and 4 A~S reviews have now been scanned and can be sent over the internet on request - see Club Website for updated list.

Members' deals with Auto Sleepers Group (ASG): If you are wishing to take advantage of the discount recently offered by ASG - would you please inform the receptionist before the work is started and the invoice is raised. See website for the various offers.

Website updates:-

- Update No. 04/10 26th February 2010
 - Rally list – Conkers, Derbyshire rally added. Spreadsheet updated

- Regalia – ASOC front grill badge - photo inserted
- Members' deals – ASG discount procedure added
- Stop Press – ASG discount procedure added
- New Marshals – further advice on expenses and profitability
- Update No. 05/10 10th March 2010
 - Rallies - Whitemead rally photos and report added
 - Technical
 - Ideas sheets No's 194 & 195 added
 - Fuel economy - Wilton data added
 - Admin - Contact details updated
 - Technical – 15 further model reviews and 4 Company reviews now available

And finally: My contact details on the Club website are (for very good internet security reasons), not personal and intended for prospective members and for non-members. May I ask if, as members, you could use my own e-address or postal address that is on the back page of the Newsletter in future, please?

Welcome to New Members 1

Norm & Margery Brown	Needham Market	Legend
Roy & Lynda Pulley	Nether Whitacre	Nuevo
Richard & Jane Leonard	Todmorden	Talent
Eric & Ann Waterfield	Blaby	Sigma
Ray & Lorraine Edgecombe	Woolaston	Executive
Geoffrey & Helen Eaton	Ilkeston	Amethyst
Victor & Phyllida Scrivens	Thorpe St Andrew	Palermo
Dave & Jen Atkin	St Helens	Pollensa
Robert & Jean Fairfield	Northwich	Legend
Jonathan & Janet Sinden	Battle	Luxor
Lance & Mignon Longbone	Burgess Hill	Duetto
Peter & Carole Dobey	Nr Leek	Executive
Keith & Julia Brooks	Danehill	Nuevo
Peter Ellis & Dave Webb	Brighton	Topaz
Mike & Jacky Tidball	Yeovil	Executive
Alan & Joyce Yates	Norton	Nuevo
Tony Davis	Nr Shefford	Duetto
Jeff & Maggie Cook	Bristol	Executive
Tony & Pauline Hawker-Bond	Blackeney	Ravenna
Brian Beck & Margaret Thurston	Stockport	Topaz

A Cautionary Tale

Last year we took the opportunity to change out smiley face Duetto for one of the newer Transit based ones. Being so far out in the sticks, SW Scotland actually, and with the nearest Motorhome dealers being a good overnight trip away in any direction, after a long and involved web search we decided to suss out the ones in the north of England first, there being a goodly number in and around Preston then on to Huddersfield and lastly the Newcastle area. On checking out the ones in the Preston area first we were lucky enough to be able to examine a 90bhp auto at Todds and a 125bhp auto 'Ice' at Marquis, unfortunately both were spoken for but the dealers let us inspect them under their supervision, they must have recognised experienced Auto-Sleeper aficionado's!

At Brownhills NW we had a long informative chat with the salesman who checked out our part exchange and then asked if we had looked at their web stock list, which we had, as luck would have it a new entry had just been posted BUT it was at Newark! He would get it transferred to Preston if we were really keen but as this would take time delaying our replacement search, we elected to go down to Newark the following day and check it over, a mid 2000's Duetto being a little like rocking-horse manure at this time. The van would be suitable, after side door damage repair and a general fettle had been done (another very long and involved story) so a month later we collected a nicely presented '05'Duetto Auto Shift Manual (ASM) Transmission from Preston. The 'van has performed well, the extra power (125 viz 79) and the ASM makes it a nice unstressed vehicle to drive.

Now the Tale, after a visit down south in late November we parked it up on its hardstanding beside the house, did all the usual things to prepare it for winter, Coldwatch on inside the 'van to keep it aired, water drained off, etc. etc.

Come to go up to our sons mid February the 'van would not budge! Having an ASM transmission there was not enough 'bite' when engaging the drive. Rocking did not work and so we were STUCK!

'Calm Down Dear', Ann said. 'Engage brain, what is different from the previous Duetto?' True this had happened before, the rear brakes locking on but it was easily freed with judicious use of revs and clutch. What was needed was a jerk with a towrope to free the drum/shoe bond.

Britannia Rescue was duly called. 'Be there within the hour' we were told. On the hour we called again 'He is just 10 mins away' we were informed, sure enough he was with us in his small white van (with tow hook) 10 mins later.

I told him our tale of woe and he just grinned, 'We will just try this before we do as you suggest and yank it with a tow' picked up his 16oz hammer and proceeded to whack under the rear of the 'van. Not my cast iron drums? I thought, no he was smartly striking the bulges on the brake drum backplate.

'Try it now' he said. Sure enough the shocking had freed the sticking shoes! 'Happens all the time' he said, 'if I was you, if it is to be left for any length of time, engage gear, block the wheels and leave the parking brake off' Nuff said! You are never too old to learn!

A couple of things came to light as a result of this experience. Don't think a '1hr response' means it will be sorted soonest, our man said they respond with a mechanic in a van unless informed that the vehicle needs to be recovered. Try to give the call centre a full assessment of the problem, and even though you have a wealth of knowledge on the motorcaravan front, advances in vehicle technology may one day catch you out.

Ricky & Ann Smith

Change to LED Bulbs?

Does anyone have experience of changing Quartz Halogen spotlights for L.E.D. lamps? A phone call to A/S reveals that they are at present investigating the use of LED lamps. I believe a special sucker is required to extract the existing lamps and it looks like LED's with an MR16 type fitting replace the existing quartz lamps, at around £10 per lamp. Any thoughts, observations and experiences would be much appreciated before laying out money to replace units that already work well.

I am sorry if this material has already been covered but being fairly new to the club, I do not have long term back issues of the magazine. I also checked through all of the sheets (I think) in the big folders of hints and ideas at A/S during a recent visit. My interest was raised when I learnt that the power consumption of LED's would mean I could have six spotlight on using LED's for the equivalent consumption of one Q.Halogen.

Finally, thank you for running a previous article about Palermo beds that sag in the middle. Thanks to one contributor the problem is solved.

Alan Greenwood

I've experimented with substituting LED bulbs in both the house and the van and find that it doesn't work very well. AS and other converters now design lighting from inception based on LED products and that does work.

My compromise is to use LEDs at home where light levels for reading etc are not a concern – hall, landing, etc. In the van we have an end lounge with 6 spotlights. I have replaced two of them with LED's to use as background lighting when not on hook up. It is possible to use them to read but the beam is very directional and, if off centre, not light enough.

In the van spots I used two LED MR11 Cluster White 1 watt at £8.55. Total £17.10 + £2.90 shipping + £3.50 vat = £23.50. I am happy with them for the use we make of them. Below is a link to the BLT Direct web site I used.

<http://www.bltdirect.com/products.php?cat=241&nm=LED+Light+Bulbs>

I have no problem removing the bulbs as I have small fingers. Another option that works is to point the light straight down and drive over a rough track. I haven't tried it but I think the sucker on the end of a car valve grinding tool would do the job.

Peter Brown

Rally News

Whitemead Rally 2010

We wanted to say how much we enjoyed this years rally in the Forest of Dean. Despite the weather being less favourable than the last two years we attended, the atmosphere was brilliant from the start, when we were greeted by Mary and Celia on arrival, with our information pack and asking how our journey had been. Then Mike on his bike took us to our gravel, level, pitch.

The Monday evening talk by the railway enthusiasts was both informative and interesting; as was the SPECIAL TRAIN laid on for us on Wednesday to take us through the forest; very enjoyable despite the awful rain. The Tuesday evening 'Curry Night' followed by indoor bowls was very good; although the 'bowls' were in fact rubber eggs which made life interesting. Great idea—let's have it again!!

The organised walks and bike ride was enjoyed by all who took part, the facilities on site were very good with a warm swimming pool, Jacuzzi, sauna, steam room and restaurant. The local pub provided an excellent lunch on Thursday followed in the evening with a raffle, quiz and excellent 'Auto-Sleeper Drive'.

Thank you all (Mary, Mike, Celia and Alan) for a really great rally.

Pete & Bez Orme
(from the noisy table!!)

Barbara and Al Bucket would also like to say a big thank you to Mary & Mike Bardsley and Celia and Alan Waugh for all their efforts. It was a great rally and thoroughly enjoyed.

Peter & I would also like to add our thanks - a great start to the rally season.

A few years ago I printed a summary of the types of Autosleeper's owned by Club members. As we are once again short of contributions I thought the current status may be of interest to members, so: *Peter Brown*

ASOC Members Models					
Model	No	Model	No	Model	No
Amethyst	27	Lancashire	6	Sherbourne	2
Ascot	3	Legend	31	Sigma	9
Berkshire	2	Leisure	1	Sirius	1
Broadway	7	LT 28	1	Sportsman	2
CB22	3	Luxor	1	Stratford	1
Clubman	66	Medallion	13	Suffolk	1
CXL	1	Mezan	6	Surrey	2
Devon	6	Montana	1	Sussex	1
Dorset	6	Northants	1	Symbol	73
Duetto	57	Nuevo	107	Symphony	19
Eton	3	Palermo	3	Talisman	75
Excelsior	10	Pavo	1	Topaz	33
Executive	72	Pescara	2	Trafic	1
Flair	2	Pollensa	26	Trident	22
Frisky	5	Rambler	16	Trooper	13
Gatcombe	32	Rapport	4	Trophy	6
Gemini	2	Ravenna	13	VX50	1
Gloucester	1	Rienza	14	Warwick	6
Hampshire	5	Rimini	1	Wilton	4
Harmony	20	Romero	1	Windsor	7
Inca	11	Sandhurst	6	Zeta	5

Welcome to New Members 2

Ron & Maggie Sainsbury

Terry & June Pewtner

Richard & Liz Spencer

Les & Joyce Brunton

John & Jan Dalton

Ian Rose & Joyce Wynne

Brian & Daphne Roles

Sue Quinlan

Arlesey

Southampton

Machynlleth

Dronfield

Cannock

Billericay

Tewkesbury

Nr Glastonbury

Excelsior

Lancashire

Symphony

Broadway

Executive

Trident

Executive

Nuevo

TO SWAP (Due to bereavement)

2001 Ravenna. 1.9TD. 42,000 miles. FSH since purchase in March 2006. Tax'd August. MOT to 1st March 2011. Habitation checks since 03. 06. Rear lounge. 4 berth. All usual Ravenna features plus bike rack and mobility scooter rack by Towtall (optional. This is off but can be re-fitted very quickly). Pictures available on-line or by post.

I NEED

Symbol or similar. Preferably 2003 or later. Cash your way.

Please contact Peter Simpson at petesim774@yahoo.co.uk or 01225 762701



Thank you for your donations.

**For a Smiley face
Transit base.**

NUEVO 2008 Model. For sale : Two single bed width extensions (Aparo Upholstery) - £30.00. Can deliver to AGM Rally.

Tel.: Jeanette Adams 0151.608 8987 or e-mail: jeanette@adamsmail.co.uk.

Haynes Manual Diesel 86>99 £8
Silverscreen Solarview screen £35
Oil filter 2.5 Diesel EFL 912 £5
Air Filter (Halfords) rect. HAF215 £4

For any model

Carver Cascade drain plug New £3
Carver Cascade vent New £3.50
Auto-Sleeper Owners Manuals £5ea
VW Talent on T4
Duetto 1996
Symphony 1992
Legend GL->1993
Legend (end lounge) ->1999?
Ricky at: rathlarg@btinternet.com
01776705628 Wigtownshire Can bring to AGM

Awning, Dreamer approx 7ft x 8ft + groundsheet **free of charge** to anyone who collects it. **Contact P Whittington 01909 474240** (Workshop Notts).

Flamma Privacy Room F45i 350 Medium was used on Autosleeper Ford Pollensa Cost new £522.00 For Sale at **£125.00**
Para-Gon Silver Screen with privacy panel Ford Transit Mk4 For Sale at **£50.00**
Both available for collection
Contact christine.crowhurst@btopenworld.com or phone 01293 882604 (Crawley, West Sussex.)

Contents

From the Editors	2	Welcome to New Members 1 ...	13
AGM and The National Rally ...	3	A Cautionary Tale ...	14
Chairman's Chat	8	LED Bulbs ...	16
FoldTuk Bakeware... ..	9	Rally News ...	17
EHIC REnewals... ..	10	ASOC Members Models ...	18
Appliance Electric Consumption	10	Welcome to New Members 2 ...	18
Technical Group & Website ...	12	Swap	19
		For Sale	19

Committee Members

President	Charles Trevelyan	
Chairman	Mike Valentine	02392 482818
Secretary	John Osland-Jones	01217 448065
Treasurer	John Tidbury	01235 538593
Vice-Chairman	Baz Wellard	01329 231259
Chairman, AGM Sub-Committee	Nora Venables	01902 332105
Rally Co-ordinator	Neil Rogers	01325 374540
Webmaster & Chair, Tech.Group	Baz Wellard	01329 231259
Regalia Officer	John Jones	01623 627903
Newsletter Editor	Peter Brown	07771 827711
Membership Secretary	Jill Bertlin	01539 534500
Committee Member (Co-opted)	Andy Cavell	01635 201976
Committee Member (Co-opted)	Al Bucket	01304 369149
Committee Member (Co-opted)	Alan Waugh	01392 271955

Any item appearing in this Newsletter may be freely used by other publications. Please acknowledge both author and source.

Items for the Newsletter **MUST** reach your Editor by the **TENTH** of the month. You may post them to 5 Kenilworth Walk, Cheadle, Stoke-on-Trent ST10 1WA or e-mail to petercb1952-asocnews@yahoo.co.uk. Or when notified to, send to Deputy Editor **Dudley Woodhams** at 83 Langdale Place, Newton Aycliffe, Co. Durham DL5 7DY or e-mail to snowgoose1@hotmail.co.uk. Jill Bertlin The Rockeries, Sunny Terrace, Lindale, Grange-over-Sands, Cumbria, LA11 6LQ e-mail jbertlin@aol.com. Baz Wellard 18 Greenwood Close, Fareham, Hants PO16 7UF E-mail baz.wellard@virgin.net.

The Editor reserves the right to edit or omit items. Advertisements for items to be sold or wanted by members are published free of charge, however, small donations to Club funds are appreciated and will be acknowledged. No guarantee can be given that any item will appear in the next, or any, issue of the Newsletter. Cheques should be made payable to 'Auto-Sleeper Owners' Club' and NOT TO ASOC and send to the Editor.

IMPORTANT: Contributions from Members are published in good faith in the hope that they will prove useful or interesting. All reasonable care has been taken to ensure accuracy but no modification or suggestion has been tested by the Company, the Club or your Editor. Therefore no warranties are expressed or implied nor indemnities given. You try them out at your own risk.