

[www.asoc.fsnet.co.uk](http://www.asoc.fsnet.co.uk)

# **AUTO-SLEEPER OWNERS' CLUB**

*A Company Limited by Guarantee*

*Registered Office: Orchard Works, Willersey, Nr. Broadway Worcs. WR12 7QF.*

*Registered No: 4616969*



*Delusions of Grandeur??*

**NEWSLETTER 229**

**October 2007**

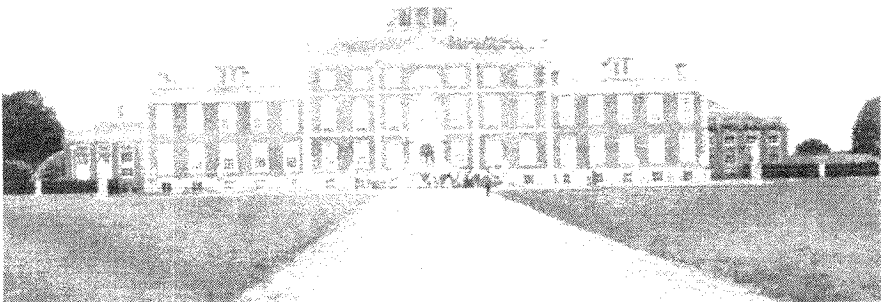
# From the Editor (S)

First a reminder to send your input for the next two issues (November and December) to Dudley Woodhams, his contact details are on the back page. And speaking of which, where is all your input for this month? We've had a devil of a job finding enough copy, we nearly had to take some pages out!! Anyway it's given us some room for a couple of quizzes we've been sitting on for a while.

I'm sure everyone's been out and about all summer (and I use the word loosely) enjoying themselves like we have, considering Peter works 3 (though it's sometimes 5) days a week, we manage to get away quite a bit and the family do have trouble keeping track of us.

Enclosed with this month's Newsletter is the ASOC Renewal Form. Please complete it and send it to the Membership Secretary, who, at the moment is John Osland-Jones 'Ozzie'. His address is on the renewal form and his full contact details are on the back page of the Newsletter if you have any queries. Can you please also complete and return this form if you pay by standing order, so that your up to date details can be cross checked with the database.

Anyway because we seem to have more Newsletter than copy.... Here's a view of wimpole Hall taken by Angie Cavell.



## ***New Rally Slips***

In the Rally Supplement within this Newsletter you may notice that the format for the rally slips has been changed. Over the past two years I have consulted marshals & members for their opinions on how the rally slips could be improved.

I have modified the format to give the marshals more of the information that they require when running a rally. The new format also gives members more space to write in the required information. There will be 2 rally slips in each Rally Supplement ie. 24 rally slips during the year. If you need more either save them from earlier Rally Supplements or photocopy them.

Please make sure that you use these rally slips when applying for rallies and not any other form of rally slip, and complete all sections on both sides, as before.

These revised rally slips were accepted by the Committee and it was agreed that they would replace the existing ones as from October 2007. If you have any comments about the new slips then please let me know.

***Neil Rogers***

---

## **It's a small world!!**

***Robin Gardner***

Val and I went to Liz Irvin's Lincoln rally and on the rally list we saw Gill Brindley from Newbury, was attending, (who sadly had recently lost her husband). While we had been on the same rallies before with Gill and Ken, we had never met to speak. As I originate from Reading I had often visited Newbury and it was where my mother went to school, attending Newbury Grammar School for Girls (which was during and after the Great War), I thought it would be nice to see how much we both knew of Newbury.

When we met at the *Meet & Greet*, we found she had brought her elder sister, Joyce Osbourne with her for company. I asked Gill where in Newbury she came from and she replied she lived a few miles outside, in

the village of Kingsclere. This was a good starting point as my mother was born in Kingsclere. Her father, my grandfather, was Ralph Moreton who was Head Lad to the famous racehorse trainer John Porter, who trained in the latter part of the 19th century. While working for John Porter my grandfather met and married my grandmother, Annie Matchwick. Early in 1904 my mother Hylda was born and about this time John Porter retired. Grandad became a trainer in his own right and set up stables at Park Farm, Upper Lambourn, towards the end of 1904. He won many races, but was never in the same league as John Porter.

Park Farm was a large house and as much entertaining was required they had a number of staff, including a housekeeper. During the time they were at Park Farm they had two housekeepers, the second being a Miss Sly, not only a good housekeeper but she and my grandmother became close friends.

When grandfather died in 1931 grandmother moved out of Park Farm and Miss Sly had to seek new employment. She became housekeeper to Hugh Turner, part owner, with his brother, and editor of the Newbury Weekly News, it's offices and printing works being at 34 Northbrook Street, the main street of Newbury.

From the 40s onwards my grandmother, who now lived in Reading or my mother would often go to Newbury, taking my brother Tony and I, to visit Miss Sly, and we got to know Mr Turner *and* his bad tempered dachshound (who bit Tony on the nose once!). Mr Turner as I recall, was a kindly man and showed us both round the printing works. To me as a small boy, the presses were giants.

I told this tale to Gill and Joyce and imagine my surprise when Joyce said that her first job in the early 40s was with the Newbury Weekly News, as a proof reader and general dog's body to Hugh Turner. One of her tasks, as cigarettes were in short supply at the time, was to go round all the shops for supplies. She also knew that '*bad tempered dog*' and of course she also knew Miss Sly. *It is a small world!*

Once again, like my Germany trip (August Newsletter), if it was not for ASOC I would never have met Gill or Joyce. I hope we now meet on many more rallies.

## **Bulk Gas Cylinder** *Joy & Nigel Wilkins*

We have recently had a bulk gas cylinder fitted to the underside of our Executive. Our reasons for doing so are threefold;

1. So that himself does not have to carry heavy cylinders
2. To save himself from damaging his hands when trying to fit them
3. To avoid running out of gas first thing in the morning, the system having an indicator of contents inside the van.

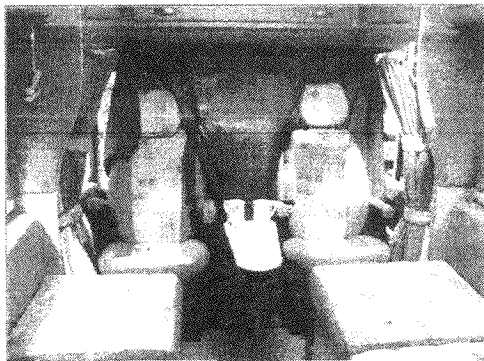
We do not expect to recover the cost of the installation unless we are very lucky, but the usable capacity is the same as two 6kg propane cylinders which cost £36 to replace and to fill the tank to 80% was £11, so running costs are under a 1/3. We've also gained a beanie box with space for bucket, levelling blocks, water container, etc.,

We wonder why motorhome converters do not fit underfloor tanks on new models, surely the cost of installation would be less during conversion??

\*\*\*\*\*

## **Idea for a coffee (or tea) table.**

Thought this might be of interest. This small table was made to enjoy a mug of tea while watching TV, still allowing access to the rear of the van. I used the existing table leg and made a shaped top to fit it.



***Denis Kimber***

## Upholstery Query

We had an email from Peter Hales who purchased a year old Symbol in November 2006. Because of a problem with the upholstery coming undone, it was returned to the dealer and although they repaired the upholstery Peter was informed that 'the upholstery is only under warranty for one year from manufacture, not two as previously indicated'.

We passed this query on to Auto-Sleepers who responded:

*Auto-Sleeper's warranty "guarantees the body conversion of the motorhome against failure arising through defects in workmanship or material under normal use and service for a period of two years from the date of purchase or registration whichever is earliest. Subject to limitations and conditions specified the Company will, during the warranty period, repair free of charge any defects which arise in the conversion part of the motorhome and which are found on inspection to result from faulty workmanship or materials." There are Upholstery Maintenance instructions in the Users Handbook, which contribute to the terms and conditions of the warranty and yes the warranty does cover upholstery for two years in accordance with these guidelines.*

We think Auto-Sleepers have cleared up that particular query unequivocally.

---

### ***Thank you***

May I thank everyone who has sent me cards and good wishes during my recent illness.

It's great to belong to such a wonderful club like ours and to have made so many good friends over the years and to know they are thinking of you when you have a problem.

***Ray Wood***

# Technical Group & Website

**Baz Wellard**  
**Chairman Technical Group & Webmaster**



## **Peugeot X250 Radios:**

I have received a reply from Peugeot, through Auto~Sleepers, with the good news that the radios on the X250 are designed not to run down the engine battery. However this does not resolve the main problem I raised that the 'ignition' switch has to be left on (*not recommended!*) if one wishes to listen to the radio/CDs over the van speaker system when stationary for longer than 20 minutes. I have asked Auto~Sleepers if they would re-present this fault to Peugeot, in the hope of an early resolution. I'll keep you advised.

## **Ideas Sheets:**

Auto~Sleepers have kindly reviewed and approved another good idea from Dave Kibblewhite, available by SAE to 18 Greenwood Close, Fareham, Hants PO16 7UF; (please include your membership number):-

- Ideas Sheet No. 141 Drinking bottle stowage in a Peugeot X250 Boxer door pocket

## **Tyre valves:**

In reply to my query regarding tyre valves on alloy wheels, Auto~Sleepers have obtained this statement from Ford: -

"Just for clarification all Transits have a 'Full' metal insert that runs the whole length of the rubber outer sleeving and these are on Alloy & Steel Wheels"

I thank Stephen Small, Chief Engineer at Auto~Sleepers, for his support in concluding this subject.

**Website:**

- Update No. 8/07 (11<sup>th</sup> Aug) contained – Questions and answers from the Open Forum at the AGM, (*available by SAE as above*) and release of Ideas Sheets No's 139 & 140.
- Update No. 9/07 (31<sup>st</sup> Aug) contained: - Photographs and reports of the Malvern Open-Air Concert and the Topsham rallies. Supplementary update No. 9\*/07 (4<sup>th</sup> Sep) contained – updated information on the Auto~Sleepers Service Centre; and two more vehicle reviews added to the library; - Pollensa 2000 and the Symbol 2007; available by SAE as above.

Please visit your local library if you do not have personal access to the web.

**Tip:**

An occasional smearing of olive oil on the rubber seal and blade of your Thetford toilet will keep the rubber supple, and prolong its life. This routine maintenance is often forgotten until it is too late and the seal is damaged! Do not use any other lubricant such as Vaseline or vegetable oil.

\*\*\*\*\*

**Can anyone help?**

We bought our 1992 Trident about a year ago, we joined the club shortly afterwards and have been delighted with the friendly and constructive advice we read in the newsletter.

Recently the plastic exterior panel covering the rear offside window fell off and we noticed that it is simply attached with mastic. Could anyone please let us know if this panel has any purpose beyond the decorative and also what to use to re-attach it?

***David and Jackie Hope***

# Rally News

## *Burn Gliding Club Della Chapman*

What a lovely, long relaxing weekend we all had at this Gliding Club near Selby. Sun, sun and yet more sun!

Although there weren't many of us there, those who didn't come missed out. Peter and Irene Wilson said they will certainly go again. Thank to Alan Guest and Don Bland, our marshalls. Well done 'boys' for a good venue with excellent facilities.

## *Wimpole Hall Chris Mawdsley*

We all had a great time at Wimpole Hall at the beginning of September. You'll see from the front cover what a lovely place this National Trust property is, no wonder the Newman's van suffered delusions of grandeur! Although grand it actually has a family feel about it and the view from the saloon is spectacular as you can see the full length of the drive - a lovely tree lined avenue stretching into the distance - in one direction and right up to the folly in the other.

The surrounding grounds provide pleasant walks across open parkland, round, or across, a couple of lakes and on up to the folly. On one such walk we went across one field of sheep and it wasn't until we were nearly at the other side that I noticed some of the 'sheep' were very large, with very large horns! What's more they had calves with them! It turned out they were white cattle laying down, needless to say I stepped out quite briskly and kept my eyes firmly on the gate.

Ian and Stella Ross did a sterling job providing a cheese and wine supper on Saturday evening and arranging a cream tea at the Hall's restaurant on Sunday afternoon.

The site is near enough to Cambridge for a visit and the surrounding villages were quite pretty, though I will admit to being a bit confused as we entered Croydon. There is also an excellent pub just outside the gates where we had a very good meal Sunday lunchtime.

The only slight hiccup was the fact that the Elsan point was about half a mile away! But never daunted trolleys were loaded and the march got underway!



Thanks again to Ian and Stella who are going to do a rally next year at a different National Trust site, which we will certainly try and get to.

\*\*\*\*\*

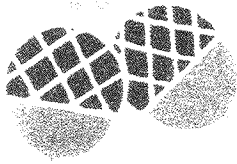
## Topsham - August 2007

Fifty motorhomes made their way to the Rugby ground at Topsham, on Tuesday 21st August, for the fifth rally run there by Liz & Bryn supported by Nora & Ven. The rally was timed to coincide with the Topsham Fair & Carnival. Although there had been heavy rain on Monday the ground was firm and drying quickly enabling everyone to get to their clearly marked out pitches without any problems.

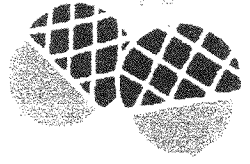
Rally envelopes were given out to each van for the ralliers to read all the comprehensive information that the marshals had collated for the rally.

At 1600 on Tuesday a walk around the small town of Topsham was available for those that hadn't been before and for those who wanted a refresher. After the walk, at 1930, a tea & coffee get-together was held in bright warm evening sunshine, *(which continued to shine for the whole of the rally).*

Liz welcomed all the ralliers and gave an update with the latest information. Sale of raffle tickets started with ralliers taking active



## OCTOBER 2007 Rally Supplement



All rallies start at **12 noon** unless otherwise stated in this supplement.

Please remember to notify the marshals if you wish to take a car, trailer or tent to a rally.

All rallies, with the exception of the National Rally, must be applied for by using only official A.S.O.C. rally slips sent by post to the relevant marshals.

**3<sup>rd</sup> - 8<sup>th</sup> October (5 nights) Autumn in Norfolk, Royal Norfolk Showground, Norwich.** Applications had to be made by **SEPTEMBER 1<sup>st</sup>**.  
**Please do not arrive on the rally field before 1.00p.m.**

**8<sup>th</sup> - 12<sup>th</sup> October (4 nights). Walk the Wolds, Alford Cricket Club, Lincs.**

Emergency Tel. No. 07768164522.

Site Fee: £30.00.

**This rally is now fully booked.**

ly Fee: £2.00.

Rally Marshals: Jd

Meals (optional) T

head payable at rally. (Incl. VAT)

### **NEW RALLY**

**26<sup>th</sup> - 29<sup>th</sup> October (3 nights) Fishery Creek, Hayling Island, Nr. Portsmouth.**

Emergency No. 07745 522 335 (Marshal's Mobile).

Rally Marshals : Mo & Mike Valentine, Angie & Andy Cavell.

Site Fees £14.30 per night inc. electric hook-up, also includes the use of a room for the evenings.

Rally Fee : £2.35 - couples, £1.50 single. Both inc. VAT.

Rally Slips & cheques payable to M.Valentine please with SAE for reply and directions to: M

Valentine, 11, Hamilton Close, Langstone, Havant. PO9 1RP (tel : 023 9248 2818)

**Because it is the schools' half term, replies by the 8th October please, we must advise the site of numbers by the 9th October 2007.**

All the usual camp site facilities, including disabled.

Dogs are welcome on leads.

Fishery Creek is set adjoining a tidal creek of Chichester Harbour with pathways leading to easy walks and extensive views of the harbour and the Solent. The park is well maintained, the grass drains very quickly and there are tarmac access roads.

Approx 5 min. walk takes you to the beach, local shops and pubs.

**Attractions.** Chichester, Emsworth, Portsmouth with its Maritime Museum. (HMS Victory, Mary Rose, The Warrior).

**Please do not arrive before 1 pm.**

**9<sup>th</sup> - 13<sup>th</sup> November (4 nights) Somerset Carnival, Burnham on Sea.**

Rally Marshals: Linda & Brian Ellis, Sheila & Ivor Barnett.

Site Fee: £51.00. (Includes electric). Rally Fee: £2.50. Total £53.50. (Incl. VAT) **by the end of**

**September please.**

Rally slips & cheques made payable to Brian Ellis, 52 Golf Links Road, Burnham on

Sea, Somerset. TA8 2TP. Tel.No. 01278 784 524. Mobile 07711375323.

The Carnival is on Monday evening. Rally limited to 60 pitches, 45 are hardstanding 15 grass. Site toilets & showers. NO PETS ALLOWED, site rules.

**Rally limited to 60 pitches,45 hard standing, 15 grass pitches with electric hook up.Pitches allocated as slips are received.**

**Attractions:** Saturday coach trip to Clarks' Village of Street ( shopping) cost approx. £3.50 each.(**DO NOT send payments but indicate interest** on slip).Sunday evening Fireworks display on beach.Monday a.m. beach to pub walk.Monday evening two hour (approx.) Carnival Procession. The Holiday Village is approx.10 mins walk from the town centre.There is also a Saunders Garden Centre a short ride out of town with parking.

**Directions:** Post Code TA8 1NQ. M5 junct. 22 Burnham on Sea exit.To large island (Edithmead A38) turn **left** and follw signs for Burnham Holiday Village ( Taunton A38).In approx.1 mile straight over island A38 continue past Caravan Sales, over railway bridge then turn **second right** signed Burnham Holiday Village to mini island by petrol station.Bear **left** towards Burnham town centre.Holiday Village about a ¼ mile on **left**.  
**Rally starts at 10.00a.m. Friday 9<sup>th</sup>. November.**

**22<sup>nd</sup> – 26<sup>th</sup>. November. ( 4 nights).Dickensian Fair,Ford Park,Ulverston,Cumbria,**

**Rally Marshals:** Don Bland,Roy Loveys & John Garlick

**Site Fees:** £5.00 per night per unit. **NO ELECTRICITY** Rally Fee: £3.00 couples,£1.50 singles.

**Rally slips & cheques payable to Mr.D.Bland, 38 Oakwood Drive, Ulverston, Cumbria LA12 9JG.Tel.No. 01229 587 937.**

**Attractions:**Ulverston is in the centre of the Furness Peninsular, South Lakes, Barrow,North West Coast,Morecambe Bay.

The rally is being held on the Dickensian Festival Weekend.Victorian/Dickensian dress very welcome.Don't miss out !

A meal can be arranged. Use of Ford Park House – kitchen,toilets & showers.

**Directions:**Take A590 from Junction 36 on M6.Follow signs for Ulverston,after Booths Supermarket roundabout take first **right**(Swan Hotel).Take 3<sup>rd</sup>. **right** (signed Hoad Hill).Sharp **right** hand bend entrance ahead.

*If you wish to run a rally in 2008 please contact me to check dates **before** booking with a site.This prevents any clash of dates.*

*To be shown on the "Provisional Rally List" for 2008 I must receive dates by **the end of November 2007.***

*We depend on volunteers within the Club to act as Rally Marshals.If you know of a suitable site why not think about running a rally.It is not difficult & help is available.Committee members are also available to assist if required.*

*I have some sites that have offered a rally site,they have not been vetted as to suitability for rallies,please ask if interested.*

*A "Guide to New/Possible Marshals" is available. If you would like one please contact me,details below.*

*It is important that **all** potential rally dates and venues are checked with me first as **unless they are approved by the Club,there will be no Public Liability Insurance.***

**Neil C. Rogers**  
**3 Appleby Close,**  
**Aldbrough St. John,**  
**Richmond,**  
**North Yorks,**  
**DL11 7TT.**

**Tel./Fax. No. 01325 374 540 E-Mail. [ncr@nasuwt.net](mailto:ncr@nasuwt.net)**

**E & OE**

Rally ..... Date .....

Your name and address (Please PRINT) .....

.....

..... Post Code .....

Phone No. .... Mobile No. ....

Van Reg. .... Length .... Membership No. ....

e-mail ..... Day/Time of arrival .....

In the event of an emergency at the rally whom should we contact?

Name ..... Phone No. ....

**Please complete both sides of this form.**

~-----

Rally ..... Date .....

Your name and address (Please PRINT) .....

.....

..... Post Code .....

Phone No. .... Mobile No. ....

Van Reg. .... Length .... Membership No. ....

e-mail ..... Day/Time of arrival .....

In the event of an emergency at the rally whom should we contact?

Name ..... Phone No. ....

**Please complete both sides of this form.**

Is this your first ASOC rally? Please tick box. Yes  No

Number of people in your van: Adults..... Children.....

Adults' names (Incl. forenames).....

Childrens' names (incl. ages).....

Cheque enclosed for £..... for..... nights incl. rally fee.

Extras: Please indicate which you would like, if available:

Electricity: Yes  No  Evening meal: Yes  No

Have you any special needs? Yes  No . If Yes please specify:-

.....  
Full payment MUST accompany this slip-cheques payable to the marshal.  
POST FORM TO REACH MARSHAL 14 DAYS BEFORE EVENT,if possible.  
Enclose a SAE if confirmation is required.

Is this your first ASOC rally? Please tick box. Yes  No

Number of people in your van: Adults..... Children.....

Adults' names (Incl. forenames).....

Childrens' names (incl. ages).....

Cheque enclosed for £..... for..... nights incl. rally fee.

Extras: Please indicate which you would like, if available:

Electricity: Yes  No  Evening meal : Yes  No

Have you any special needs? Yes  No . If Yes please specify:-

.....  
Full payment MUST accompany this slip-cheques payable to the marshal.  
POST FORM TO REACH MARSHAL 14 DAYS BEFORE EVENT,if possible.  
Enclose a SAE if confirmation is required.

participation.

On Wednesday a walk had been arranged and was led by Liz's brother, David. The walk was from Budleigh Salterton along the coast then inland to Otterton. The logistics meant that all those going (34) caught the bus from outside the camping ground to Exmouth and then another bus to Budleigh Salterton. Special rates were available and for £3.80 one could travel any where in Devon! Both journeys were without trouble albeit the buses were full and, naturally perhaps, very noisy. The walk from Budleigh Salterton gave the walkers the opportunity to see a short section of the the famous 'Jurassic' coast. Leaving the coast the walkers followed the River Otter inland for a short while, until a decision had to be made whether to take the shorter route to Otterton, by continuing up the riverside, with Liz - or alternatively the longer route following the coast and then coming back inland to reach Otterton, with David. Those on the short route had their lunch in Otterton, whilst those on the longer route had a picnic lunch on the coast. The return trip was by bus from Otterton via Budleigh Salterton; changing at Exmouth for Topsham.

The same evening teas & coffee were available for anyone who wished to relax and sit in the evening sunshine with friends, and join in on a special dice game, with the proceeds going to a local charity.

Thursday was yet another brilliant day's sunshine and it was up to ralliers how they spent the day. Some going into town to see the brilliant flower display in St Margaret's Church, (*open for 3 days*). All the many displays had the theme of 'films', and their designs, ideas and creations were a credit to the ladies who worked so hard.

The 'film' theme was also extended to local shops who decorated their shop windows with film titles - but with one added item. All the windows had a 'mistake' in the display for observers to discover.

In the evening there was the opportunity to gather and have evening meals together, to which the great majority took advantage. Teas and coffees were on offer followed by the raffle draw.

Afterwards the majority of ralliers walked down to the quay for a drink in the lovely evening sunshine and where they were entertained by Morris Dancers, with several of our ralliers joining in when invited!

Friday brought an opportunity to take advantage of visiting the local area by motorhome; bus; bicycle or walking.

A great many took this opportunity to visit the very attractive city of Exeter, with its great Cathedral; attractive gardens; city walls; original bridge; catacombs and the quay. In the 'days-of-old' goods were taken by canal to Topsham where they were put aboard ships at the town quay. However the City of Exeter invested money to build its own deep water quay thus by-passing Topsham, making the Topsham-to-Exeter canal and tow path only used for pleasure. Saturday was a very busy day. There was a bric-a-brac market in Matthews' Hall, with a small, but very good, jazz band outside, and the opportunity to see a display by the local Fire Brigade.

Also available was a visit to the very interesting museum, which included the opportunity to partake of a really excellent cream tea. In the museum there was a sneaky chance to see a reconditioned very old small tender named the Cygnet, before it is put officially on display. The Cygnet is old and was originally a tender to a larger yacht called the Swan, and was due to be broken up but was saved by the forethought of the Museum.

Twenty five Town Criers, with their consorts, visited the town each year to partake in the annual competition for the best Town Crier. They paraded the the main town road and performed their skills at the Globe Public House. Several ralliers had met one of the Town Criers at the Lichfield, Rally - who, had it been permitted, was going to mention the ASOC in his speech.

Early Saturday evening farewell teas & coffees were offered back at the rugby ground, and Liz took the opportunity to thank ralliers for coming and wishing them a safe journey home. Appreciation was given by Oz to all the effort that all the Marshals had put in to make the rally so successful. After the farewell session all the ralliers walked back into town for the evening carnival, which was extremely well presented with much gaiety, colour and enthusiasm.

Following the long procession, many ralliers went down the quayside for a shandy-or-two! Finally, when the Bagpipe Band returned to the Rugby Field to collect their cars they gave an impromptu musical finale.

Sunday came all too quickly, with ralliers individually thanking Liz & Bryn and Nora & Ven for all their efforts in making the rally such a success for the fifth year running.

Roll on next year!

*Baz Wellard*

*Stolen from the website!!!!*

## Test for Dementia

Here are 4 questions to be answered instantly, don't take your time answer all of them straight off.

1. You are participating in a race and overtake the second person, what position are you in?
2. If you overtake the last person, then you are.....?
3. Mental arithmetic. Take 1000 and add 40, then add 1000, then 30. Add another 1000 then add 20, then another 1000, then 10. What is the total?
4. Mary's father has five daughters - Nana, Nene, Nini, and Nono, what is the name of the fifth daughter.

## A Town Like...

You may have seen this quiz at Burnham Carnival rally but can you remember the answers? Each question of cryptic clues gives a town or city in Gt. Britain, some of which "may only sound like the name".

**Brian Ellis**

1. Edible products final date for sale.
2. Two thirds of a macho chocolate bar.
3. Police enquiries may follow up on these.
4. This river crossing can carry 20 hundredweight.
5. Piggot used to ride horses.
6. The late Rod and Emu.
7. A plateful of sandwiches passed round, but no-one had an appetite. How could we tell?
8. Tupperware lids, not screwed down, just .....
9. Tony ..... Radio One's first DJ.
10. Could this be Scotland's answer to thick chips?
11. Like spiders and bugs, this town may be creepy.
12. Traditionally a ruffians game played by gentlemen.
13. A Mafia contract on Mr. Knock's mother ....?
14. B & Q 's range of Timber for the D I Y.
15. Laminated wood and facial orifice?

*All answers on page 16*

## From the Factory

During the factory shutdown period, other than general maintenance, safety checks and a bit of re-decorating, not a lot happens at the factory. Having said that we have completed our NEC Show vehicles which are our 2008 models. Whilst the changes are predominantly cosmetic, there are a few that have been fed back from ASOC, dealers and customers which undoubtedly improve the usage and operation.

August is the Group's year end, which ended on a very strong note and this is how I want our next year to commence. Both new Peugeot panel vans have been widely acclaimed and with a third soon to be displayed we are feeling pretty pleased with ourselves. However, we must not sit back on our laurels, to the contrary, we must use this strong position to continue to build new and exciting products.

See you all at the NEC Show.

*Ian Capes*

---

## Homologation - what does it mean ?

Homologation comes from the verb homologate, meaning to approve or confirm officially, and is the certification of a product or specification to indicate that it meets regulatory standards.

At the moment, the only regulatory standards that motorhomes have to comply with in this country are the UK national standards, which are known as 'The Road Vehicles (Construction and Use) Regulations 1986' and the 'Road Vehicles Lighting Regulations 1989'. These standards are written into law and cover all aspects including dimensions, weights, brakes, steering, seats and seat belts,

lamp positions and visibility, to name but a few. These standards, which are self policing, only apply in this country and if we wished to sell vehicles in another country we would have to build the vehicle to comply with their national regulations.

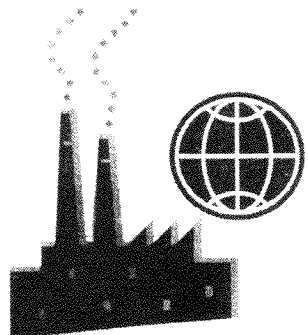
However, within the EU there is a European wide approval scheme known as 'European Community Whole Vehicle Type Approval' (ECWVTA) which was introduced in the 1970s and now covers all cars built in the EU. The benefits of this scheme are consistency of environmental and safety standards, independent validation of performance against legislative requirements and a level playing field for companies wishing to sell in Europe thus reducing potential barriers to trade.

The scheme is based on the concept of 'type approval' which assesses the environmental and safety performance of a vehicle without having to inspect and test every single one. Basically, a production sample vehicle is subjected to the tests laid down in the European Directives (about fifty in total) and if it passes, and the production arrangements also pass inspection, then that vehicle type is given a unique 'Type approval number' and is approved for production and sale in any other European country without further testing. The manufacturer then issues a Certificate of Conformity which affirms that a particular vehicle conforms to the specification that was tested and specified in the accompanying documentation.

Within the next 2 or 3 years (the exact date is still to be finalised) motorhomes will also become subject to the ECWVTA process.

It is the job of the Homologation Engineer to ensure that all vehicles are built to comply with these standards and to remain abreast of any changes in legislation to ensure that we continue to produce compliant vehicles.

**Peter Kingsnorth**  
**Homologation Engineer**



## **Answers to Dementia Test**

1. If you answered that you are first then you're absolutely wrong! If you overtake the second person you take his place, so your second.
2. If you answered second last, then you're wrong again. Just how can you overtake the last person?

You're not very good at this are you?

3. Very tricky arithmetic. Did you get 5000? Wrong again it's 4100.

If you don't believe it, check it with a calculator.  
Not your day today is it?

4. Did you get Nunu? Of course it isn't her name's Mary. Read the question again.

---

## **Answers to A Town Like....**

1. SELBY 'Sell by' date
2. YORK 4 of the 6 letters of 'Yorkie'
3. LEEDS
4. TONSBRIDGE
5. LEICESTER Lester Piggot retired jockey
6. HULL Rod Hull
7. NUNEATON None (nun) were eaten
8. PRESTON
9. BLACKBURN
10. DUMFRIES Dumb fries?????
11. CRAWLEY
12. RUGBY
13. KILMARNOCK Kill ma knock
14. WOODSTOCK
15. PLYMOUTH Ply (wood) mouth
16. SOUTHEND ON SEA
17. ANDOVER 'And over your money'
18. AVON
19. BANGOR
20. WATCHET

## WANTED

**AS VW Topaz** with automatic gear box, preferably 2000 onwards but will consider earlier. Have just sold larger motorhome and seriously need smaller vehicle ASAP.

**Contact Richard or Maura McFall 01474 702081. Photos to [Pollensavan@google.mail.com](mailto:Pollensavan@google.mail.com)**



### **AS Symbol 2001 - Disabled Equipment for Sale**

Pair of telescopic ramps to access Peugeot body side door with adaptor board that uses the fitting for the table island leg. Provides access for a wheel chair. A members Idea Sheet was published to show how these ramps could be stowed securely against the washroom wall when in transit.

12 volt winch with remote and safety controls. (As fitted to 'Gowring' mobility vehicles for hauling a wheel chair up the ramps).

Pro-Tec winter cover used for two seasons only, including 2 telescopic lifting poles that are a boon when fitting the cover.

Stand-alone 'Apache' awning with curtains, suitable for rear or side on any similar van conversion.

Some 24 modifications were added to this Symbol for a severely handicapped wife and I am willing to discuss these with any members.

**Contact Roy Newbury 01763 852241 (Hertfordshire).**

Thanks for the donation

Safari Room for Amethyst (little used)	£75
Silverscreen Ford Transit (2001 Amethyst)	£45
Clutch claw (pre 2000 Ford)	£20
Clutch claw (2001 Ford)	£45
Pair A/S taps (pt No WE0720)	£10
Cassette toilet trolley (for larger cassette)	£5
Camping Gaz Safari Lantern	£2
Full 907 Camping gaz cylinder	£8
Calor Gas cylinder with Quick On butane regulator	£5
4 Fiamma large levelling blocks	£4
Pair Seismic blue cycle helmets	£10

No reasonable offer refused. Buyer collects or pays for post and packing.

**Ring Bryan Phillips 01963 824416** (Wincanton, Somerset)

---

**Peugeot Boxer Symphony**  
2+2 berth. Reg March 2000.  
Imaculate condition. 1.9 TD  
PAS FSH MOT and Tax July  
2008. 44,000 miles. Alarm and  
immobiliser. Awning, Status  
aerial, tow bar. Non-smokers,  
no pets, no children. **£18,500**

**Contact Bob & Pauline**  
**Evenett 01884 252691**  
(Devon)

Thanks for the donation

---

**2003 Peugeot Nuevo 2L HD.**  
Standard spec, external silver  
screen. Non-smokers no pets.  
**£24,000 ono**

---

**Contact M Winfield 01270**  
**560606** (Crewe)

Thanks for the donation

---

**Spares for 1993 AS Trident**  
VW California.  
**Contact David Grover**  
**D.Grover@westminster.ac.uk**

---

**MMM Magazine** Free back  
copies March 04 - December  
05.

**Contact Fred Keys 01753**  
**645489** (Buckinghamshire)

---

**R-reg Automatic Duetto 2.5**  
TD Ford 21,500 miles. Non smokers, no pets. Reversing sensors, 2 x 4.5 propane cylinders with Gaslow gauge. Recent leisure battery, separate CO2 & smoke alarms. New Vanco tyres (inc. spare) with steel valves. Full MOT & Service. Taxed to 2008.  
**£17,500 ono**

**Contact Richard Martin 0208 466 8985 or 07971 011296** (SE London/Kent)

Thanks for the donation

---

**A-S Executive Peugeot 2.5 TDI 1995** M-Reg 1 owner from new, non-smokers, no pets, dealer maintained, full service history. MOT to June. 2 new batteries, Omnistor awning, mini-Heki, Thatcham alarm, bike rack, Beeny boxes plus many extras. 93000 miles. £10,500 ono. Tel 029 2075 9790 (Cardiff) after 3<sup>rd</sup> October, or e-mail [van@cfookes.plus.com](mailto:van@cfookes.plus.com) for full details

Thanks for the donation

---

**2005 Amethyst 2.4 TDi 6** speed, 10,000 miles. Driver & passenger airbags. 1 owner. Cat 1 Thatcham alarm, Fiamma

awning, directional TV aerial. Immaculate. **£36,995 ono**  
**Contact Chris & Beryl Knowlson 01625 531154 or email [chrisrvk@ntlworld.com](mailto:chrisrvk@ntlworld.com)** (Cheshire)

Thanks for the donation

---

**External silver screen** with roll-down panel on front section. Fits Peugeot Boxer (Aug.99). Little used, no damage **£40.**  
**Hookup** cable still in original sealed wrapping **£10.** Buyer collects.

**Contact Amy Cleary 01453 882928 or email [aytee@yahoo.co.uk](mailto:aytee@yahoo.co.uk)** (Gloucester)

Thanks for the donation

---

**1997 VW Clubman GL 2.4 TD.** Taxed & Tested to May 2008. New cam belt, completely serviced, new battery, bike rack. Usual AS fittings. Genuine reason for sale. **£15,995.**

**Contact Anne 01246 414549** (Derbyshire)

Thanks for the donation

---

## Contents

From the Editors ... .. 2	Rally News ... .. 9
New Rally Slips ... .. 3	Test for Dementia ... .. 13
It's a small world ... .. 3	A Town Like ... .. 13
Bulk Gas Cylinder... .. 5	From the Factory... .. 14
Idea for a coffee table ... .. 5	Answers ... .. 16
Upholstery Query ... .. 6	Wanted ... .. 17
Thank you ... .. 6	For Sale ... .. 17
Technical Group & Website ... .. 7	
Can anyone help? ... .. 8	

## Committee Members

President	Charles Trevelyan	01386 853511
Chairman	Andy Cavell	01635 201976
Secretary & Membership Secretary**	John Osland-Jones	0121 744 8065
Treasurer	John Tidbury	01235 538593
Vice-Chairman	Mike Valentine	02392 482818
Chairman, AGM Sub-Committee	Nora Venables	01902 332105
Rally Co-ordinator	Neil Rogers	01325 374540
Minutes Secretary	Mike Hall	01773 778016
Chief Rally Marshall	Ben Mansfield	01723 369769
Webmaster & Chair, Tech.Group	Baz Wellard	01329 231259
Regalia Officer	John Jones	01623 627903
Committee Member	Norma Caley	01772 632734
Newsletter Editor	Peter Brown	07771 827711

Any item appearing in this Newsletter may be freely used by other publications. Please acknowledge both author and source.

Items for the Newsletter **MUST** reach your Editor by the **TENTH** of the month. You may post them to 5 Kenilworth Walk, Cheadle, Stoke-on-Trent ST10 1WA or e-mail to [petercb1952-asocnews@yahoo.co.uk](mailto:petercb1952-asocnews@yahoo.co.uk). Or when notified to, send to Deputy Editor **Dudley Woodhams** at 83 Langdale Place, Newton Aycliffe, Co. Durham DL5 7DY or e-mail to [1dudley@sky.com](mailto:1dudley@sky.com)

The Editor reserves the right to edit or omit items. Advertisements for items to be sold or wanted by members are published free of charge, however, small donations to Club funds are appreciated and will be acknowledged. No guarantee can be given that any item will appear in the next, or any, issue of the Newsletter. Cheques should be made payable to 'Auto-Sleeper Owners' Club' and NOT TO ASOC.

**IMPORTANT:** Contributions from Members are published in good faith in the hope that they will prove useful or interesting. All reasonable care has been taken to ensure accuracy but no modification or suggestion has been tested by the Company, the Club or your Editor. Therefore no warranties are expressed or implied nor indemnities given. You try them out at your own risk.

\*\* John Osland-Jones' address is  
14 Doveridge Road, Hall Green, Birmingham B28 0LU, e-mail [oslandjones@aol.com](mailto:oslandjones@aol.com)