



www.asoc.fsnet.co.uk

AUTO-SLEEPER OWNERS' CLUB

A Company Limited by Guarantee
Registered Office: Orchard Works, Wilfley, Nr. Broadway Worcs. WR12 7QF.
Registered No: 4616969



*The Committee of '94
Recognise Anyone?*

NEWSLETTER 224

May 2007

From the Editor ^(S)

The National Rally will soon be upon us and we're sure it'll be another triumph, let's hope the weather is kind, as, though not essential it's always helpful isn't it. We know Nora and her committee have put in a lot of hard work as usual and we're certainly looking forward to it.

We thought it would be a good idea if we could go round the Auto Sleeper factory and talk to the management about design and build processes, what changes have been implemented recently, etc., so that we could write an article for the Newsletter. This idea was looked on favourably and a visit was arranged.

We travelled from home to Willersey, arrived at the appointed hour, was advised that a meeting was just finishing and somebody would be with us shortly. We were shown to a room and given a cup of coffee, but when no one appeared after 45 mins we decided that it must not be convenient for us to be there at that time and left - so no article.

Auto-Sleepers have written to us, explained that a meeting had been called at short notice, apologised to us and asked if we could re-arrange the visit. We have acknowledged the apology but are not ready to visit just yet.

We had a very pleasant couple of days camping with some friends at Chipping Norton over the Easter week-end. Wasn't the weather a bonus! We had a couple of good walks, a very good meal at a local hostelry *and* the first Barbie of the season. All in all a really good time. And the Burton rally followed—more about that later.

So, what else have we got for you in May's Newsletter? Well we've got the closing chapter of the problematic potty for you this month and we're glad to see more input from the Disability Forum. We also have a very useful article about chasing winter sunshine. BUT we need input from the rest of you, so let's have some articles, you must be on the move by now.

The Dealers, Commercial Publications, etc to whom the Club sends copies of our Newsletter; please let me know if your copy of the Newsletter is of interest to you by e-mailing the Editor at the address given on the back page.



National Rally 2007

Just a short note on the National Rally. At some point during the rally, weather permitting, a Boules match is usually arranged, and it has been suggested that this year a 50p entrance fee is charged. The funds generated will go to this year's chosen charity the Guillain Barrie Syndrome Support Group.

A little light relief from Alan Waugh

Name that Van

1. The royal county of
2. Everything this king touched turned to gold.
3. Named after a county cheese from the north west of England
4. Your own stately home on wheels - fit for a princess?
5. Not a sign, but a
6. A mounted soldier swears like a
7. A brown soup, a type of tie knot or a castle
8. A traditional story or myth
9. The Shoreham rally was hosted in this country
10. A walker in the country, or a rose.
11. Neptune's fork
12. An object with magic powers, brings good luck.
13. These carpets came from Wiltshire originally
14. Not a discordant note to be heard
15. A gem of various colours, especially yellow
16. A precious violet or purple stone.
17. Music composed for the whole orchestra
18. An inhabitant of Peru (before the Spanish!)
19. A cup or shield for the winner
20. The last letter of the Greek alphabet.

Answers Page 19

Rita's Potty Problem....

When I read about Rita's troubles in the March Newsletter I immediately thought "*This is a job for the Technical Group*" and with Baz unavailable I decided I had to take some action.

There seems to be two solutions—1) Elevate the seat, or 2) Elevate Rita and as raising the seat seemed to create more trouble - space had to be found to store the thing which is not easy in a Mezan - I decided on solution 2.

After some sleepless nights and much thought, I contacted Martin Baker, the manufacturers of ejection seats fitted to most jet fighters. Their advice was invaluable.

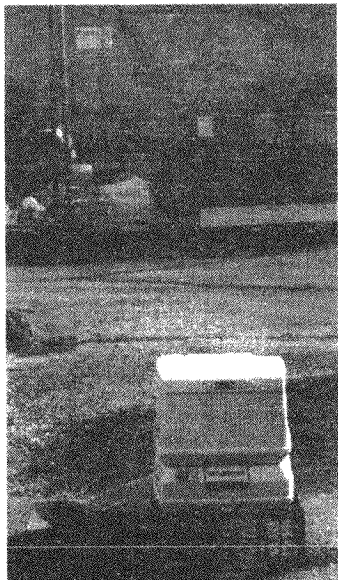
The Elsan has to be converted slightly so the seat is separated from the frame by removing the hinges and a small steel compartment fixed to the rear of the base, with a small lever on the side. There is also a strong bungee rope attached to the front of the seat. The length of this rope is critical. A lightweight harness, similar to a pair of men's braces is also attached to the seat.

OPERATION: (a) sit on seat and put on harness. (b) attach free end of bungee to a ring firmly secured to the van floor, place a small explosive charge in steel compartment—semtex is ideal, (d) relax, (e) when ready take a deep breath and raise the small lever. This will detonate the device and the seat, together with incumbent will be propelled towards the roof and forward.

Now this is the tricky bit! It is important when on the way up to straighten the knees (you have about 200 milliseconds to do this) as the bungee will now return the seat, and hopefully, the occupant to the floor. It is critical to be in a standing position when arriving at floor level, otherwise you will be in a worse pickle than before. It might also be as well to wear a 'hard hat' until used to operating the system as the length of the bungee or amount of propellant may need to be reduced.

Obviously I cannot go into too much technical detail regarding the actual mechanism as patents are pending, but I see much demand for this system and we hope to demonstrate it in 'The Dragon's Den'.

Brian Smith



But seriously Rita may have solved her problem with HAMSTER BASKETS!!!

"..... Yes, I am serious. This company has made freezer baskets, dog baskets, you name it they will make it for you. I used their baskets in the previous van to fit a long shelf, so I asked them to make a 'basket' 14" square and 4" high. It's very light and serves its purpose well.

Thanks to all those who submitted ideas.

Rita Daley

The sign reads 'DANGER deep excavation'!?

We assure the readership that the following notice, sent in by *Neil Rogers* (seen at the Ellesmere Port Boat Museum) *is* in English. Although I think by the time you had deciphered it the bridge would have collapsed!!

This BRIDGE is insufficient to carry a HEAVY MOTOR CAR, the registered axleweights of any axle of which exceeds THREE TONS or the registered axleweights of the several axles of which exceeds in the aggregate FIVE TONS or a heavy motor car drawing a TRAILER, if the registered axleweights of the several axles of the heavy motor car and axleweights of the several axles of the TRAILER exceed in the aggregate FIVE TONS.

**By Order
Leeds & Liverpool Canal Company**

My Apologies *Mike Hall*

Within a few hours of the April Newsletter dropping onto the mat, I had a telephone call from Les Howells complaining about my article regarding camping on Dutch Caravan Sites. He said, quite correctly, that I referred to The English Caravan Club when it should have read Caravan Club of Great Britain. He also complained that I said the Dutch Caravan Club sites were as good as a good English CL and he criticized me for not comparing them with a good Welsh or Scottish CL.

I feel justly told off and therefore make a humble apology to any Welsh members whom I have slighted. I would also like to apologise to our Scottish members but my Gaelic is not as good as my Welsh.

One thing that was correct was that the website of The Netherlands Caravan Club has much of their information in English and, if you want to challenge them as to why they do not have such information in Welsh, you will have to contact them directly.

We hope that you enjoy your camping in The Netherlands – but you will probably not meet many Welsh speakers who run camp sites there.

Esgusawd at Mike Hall.

Mewn hychydig horiau chan 'r Ebrill Newsletter yn defnyddio onto 'r fat, Cawn a telephone alw chan Les Howells yn achwyn am 'm erthygl yn sylwi yn gwrsyllu ach a Dutch Caravan Safleoedd. Ddeudai , eithaf 'n gywir a Chyfeiriais at 'r Saesneg Caravan Bastynu pryd ddylai wedi darllen Caravan Bastynu chan 'n Fawr Prydain. Yntau achwynedig a Ddeudais 'r Dutch Caravan Bastynu safleoedd were 'n gystal fel da Saesneg CL a beirniadaid 'm achos mo yn cyferbynnu 'u ag da Cymraeg ai Scottish CL.

Balfala 'n gyfiawn ddeudedig off a felly gwna a darostwng esgusawd at unrhyw Cymraeg aelodau whom Ca slighted.

Hun beth a was cerydda was a 'r website chan Iseldiroedd, Yr Caravan Bastynu has lawer chan 'n hwy gwybodaeth i mewn Saesneg a , ai 'ch angen at heria 'u fel at paham gwnelan mo ca 'n gyfryw gwybodaeth i mewn Cymraeg , cei at chyffyrddiad 'u 'n union. Fi would hefyd cyffelyb i apologise at 'n Scottish aelodau namyn 'm Gaeleg ydy mo 'n gystal fel 'm Cymraeg.

Gobeithiwn a feddi 'ch yn gwrsyllu i mewn Iseldiroedd, Yr – namyn ewyllysi 'n debygol mo chwrrd lawer Cymraeg areithwyr a hidla gwrsylla safleoedd 'na.

Seeking the (winter) sun!

In the mid 1990s to early 2000s many members used to seek the winter sun in Spain with Club rallies and rallies run privately by fellow members. Since those days the numbers going south seems to have dwindled greatly. Hopefully this short article might reverse the trend and encourage members to use their motorhomes to a fuller extent – who knows? Some of the points may also be useful for members going to Europe this summer.

We have been seeking the sun for most winters now for the last 9 years and there is still a great deal to be gained each time in visiting Spain & Portugal to enjoy the better weather, make new friends and enjoy the experiences. All without the summer crowds! This brief guide is based on this year's 9 week tour of Spain and Portugal. The most often asked question we get is – is it expensive? The answer is maybe, but amortised over 2 to 3 months, for two people, it works out very reasonable for the experience, so let's deal with costs first:

Ferry - £249 Cost for a 6 metre van on the Portsmouth to Le Havre route. Prices vary with routes.

Fuel - £392 Mileage covered was 3,400 miles. Diesel is cheapest in Spain followed by Portugal and lastly France. All however are cheaper than UK!

Camping - £534 Total for 57 nights. We attended 3 pre-booked Camping and Caravanning Club rallies and 2 other sites on spec. Members can get good discounts if pre-booked

and most sites give reduced rates for off-peak periods and long stays.

Camping en-route - £70 We had 2 overnight stays on the journey down to Spain & 4 on the return from Portugal. Some travellers use motorway service stations for over-night stays but one has to make an individual decision - particularly regarding security. Do not stay on Portuguese toll roads overnight, as they levy a very heavy fee if you stay on the toll road for more than 12 hours and many inland sites are closed in the off-season. So do your research.

Insurance - £256 This was the full cost for an annual multi trip insurance policy for two, covering both health & vehicle. Shop around especially if you wish to stay for over 30days. I would suggest you do not stint on this item and certainly do reveal any medical facts. Failure to do so may prove very costly.

Toll fees - £105 Using motorway toll roads can sometimes be expensive but are very useful when crossing over mountains, by-passing large cities, if there's snow or in a hurry e.g. to get to the port. We use a balance of toll and non-toll!

LPG - £ 4 We have a fixed LPG tank fitted (under the motorhome) and we topped up as we left Portugal - UK cylinders, as a general rule, cannot be re-filled on the Continent. Alternatively take camping Gaz which is readily available in most Continental countries, but don't forget that butane is not suitable if it is very cold on the way down.

Communications

Mobile phones: Expensive to send & receive phone calls and send texts.

Lap-tops: You may be able to take advantage of wi-fi to send and receive e-mails; (*Newsletter May 2006 page 6*). With a laptop you can also use a 'Skype' phone for free or very cheap phone-calls (*Subject of a future article.*)
Phone cards: Readily available nowadays are pre-paid phone cards that give very cheap rates.

Route planning

Maps You will need good quality map books, and a country map; such as produced by Michelin.

Satnav If you have a satnav you can obtain 'maps' for most of Europe, however satnavs are not quite as easy to use as in UK. Most sites do not have post-codes/street names & numbers. As in the UK don't rely on the satnav alone!

Road conditions: Always plan for the unexpected! You can get snow in France and over the Pyrenees in the winter!

Cruise control: Cruise control can be a great bonus with the long runs abroad. (*September 2006 Newsletter - page 6*).

Miscellaneous Guide to other requirements, and you will have to research for the full listing, but they will include:

- 2 warning triangles
- Spare pair of glasses (*if you use them for driving*)
- Fluorescent jackets – (*these have to be readily to hand, don't step onto the main roadway without putting them on – Spanish police can be very vigilant*)
- Set of spare lamps
- First aid kit – easily accessible

- Continental mains adaptor and a sensor to check for reverse polarity
- A long electric cable may be useful as some electrical outlets can be further than on UK sites.
- Headlamp deflectors. Don't use 'black tape' as it will most likely damage your headlamp lenses.
- E111 health cover
- Red/white warning board if you carry bicycles on the rear. Try not to let the wheels extend beyond the sides of the van!

Documents I'm sure you are aware of all the documents you need to take, but I would suggest that you take photocopies and store them separately to the originals.

Cash It is easy to obtain cash from the very many ATM machines on the continent with Maestro & Cirrus. Whilst Visa is well recognised for purchases of fuel, shopping etc.

Pets We don't take pets but for further information see May 2006 Newsletter - page 3; and November 2005 – page 2.

Rules & regulations We recommend you contact a source that is kept up to date e.g. RAC; AA; Caravan Club or Camping & Caravanning Club, each year.



The member's name has been withheld on request

Technical Group & Website

Baz Wellard

Chairman Technical Group & Webmaster



Smoke alarm:

Do you remove your smoke alarm battery when it inevitably goes off when you make toast? Or did you know that you can 'pause' the smoke alarm for approximately 8 minutes by simply pushing the centre button? A double deep note will let you know when it is re-activated.

Ideas Sheets:

- Ideas Sheet No. 135. 'Storage and easy access of warning triangle(s)'.

Web updates:

Update No. 2/07 contained: updates to the 2007 rally programme; Vivanti added to eligible models; Ideas Sheet No. 135, and details regarding further information on paint codes.

GREAT VALUE FROM THE IDEAS SHEETS

Tonie Smith

You can fit a deadbolt on a monocoque,
And get some detailed info on a door lock.
And of course, it would be nice
To add a pyrotechnical device,
Or under sink utensil drawer
And do a switch repair -- or four.
Stop ants which reach your dinner table,
And fill those draughty holes, if able.
Do not neglect the loo door when you move
But fit a fiddle rail or groove.
Reduce your Heki solar heat sometimes
And hide your tubular legs --(that rhymes !).
Avoid the accidental operation
Of your dump valves in every situation.
Important is your wine glass storage -
Make all ship-shape for every voyage.
And if your problems are too hard
Just send a note to Baz Wellard.

Disability Forum

Reading the 'Disability Forum' in this months Newsletter prompted me to write. My husband and I were caravaners for many, many year and when he died suddenly I was left 'legless' as it needed two of us to lift my scooter into the boot of the car. Hence I stopped caravanning and did not like *that* at all.

2 years went by and then I saw a 1985 Autosleeper CXL which had everything I needed. Room and access for my scooter via ramps, a place for my wheelchair. I was hooked! With a small fridge, my own loo, mains electric and some grab handles fixed what more could I ask for? And I have enjoyed the last 8 years travelling. Like Jose I make lots of stopovers if going long distances.



My old van had a top class respray 5 years ago and I have a *very, very nice young mechanic* who looks on it as his baby—no-one else is allowed to touch it. 'Col' looks wonderful and I am very proud of the comments it brings when on sites, etc.

Photo shows 3 Autosleepers, 1 couple, 2 lone ladies & 4 scooters.

Margaret Smith

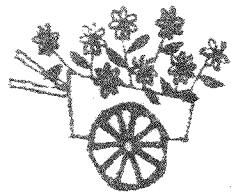
Some problems are costly to solve

I had problems getting my son Peter (aged 40) into my Talbot Express Rambler so had to get him in the side door—lifting and shoving, lovely on grass and in the rain. Then on a caravan park one morning Peter fell out of bed and became stuck on the floor laughing his head off. There was I running down the site calling "I need a man quick!!" A lovely man came (closely followed by his wife...) and problem solved.

I decided to go for a Nuevo which has more internal space. But Peter still has to be lifted up into the cab seat, so I got a quote for an electronic seat - £3,400, I could buy a car for that!! And when I no longer need it, the suppliers could re-sell it for me, but would I get my money back—I doubt it.

So it's back to hotels for any holidays together.

Name withheld by request.



May 2007

Rally Supplement.



***** Change of dates. The Sedgemoor Carnival Rally at Burnham on Sea will now be held from 9th. – 13th. November.

***** Change of dates Ludlow Food & Drink Festival now 7th.-9th.September.

Possible rally 3rd.-8th.October.Norfolk Showground,Norwich.This will be a rally at the ACCEO AGM.attendance of the AGM is not required.If interested please contact Ray Whiley on 01603 452 593.

19th May – 2nd June 2007 (14 nights) 'Italy in the Spring'.
THIS RALLY IS NOW FULL

Friday, 1st June to Saturday 9th June 2007.(8 nights) Camping Alkmaar, Alkmaar, Netherlands.

Rally starts and ends at noon. Marshals Mike & Jeanne Hall assisted by Lionel & Hilary Walker. Members must book for the full 8 nights. Rally fee £15 (non refundable) to be sent with rally slip with C5 (162mm X 229mm ish) sae for the rally information to Mike & Jeanne Hall, 45, Bunyan Green Road, Selston, Nottingham, NG16 6GF. Cheques payable to M.T. Hall. Tel.No. 01773 778016.

June 17th - 24th 2007(7 nights) Delftse Hout Caravan Site. Delft Netherlands

Rally starts at 12 noon June 17th and closes 12 noon on June 24th 2007
Rally Marshalls: Trish & Ted Pratt & Jan & Vic Hicklin.
Members must book for the full 7 nights. Rally fee: £15(non refundable)to be sent with rally slip and SAE envelope for reply.(A small envelope will do for first reply).
A 50% deposit will be required but I will send you directions.PLEASE SEND RALLY SLIPS and deposit to P.M.PRATT. 3 Grafton Road, Stapenhill, Burton on Trent, Staffs DE15 9DN (01283538818) or mobile (07713186508).

3rd.- 7th.May National Rally & AGM,Newark Showground,Notts.

Note changed closing date.

11th.-13th.May Southern Motorcaravan Show, Newbury Showground, Berks.

Emergency Tel.No. Marshal's Mobile 07743 307533.
Rally Marshals:John & Daphne Hallett.
Please send a SAE ,with rally slip and rally fee of £2.00 per unit,for a booking form to John & Daphne Hallett, 13 Linden Crescent,Grove,Wantage,Oxfordshire,OX12 7NB. Tel.No.01235 764550. E-mail hallettih@AOL.com This form must be returned to **Warners**,the organisers, before **16th..April** if you wish to rally with the Club. Please let the marshal know if booking by any other means ie, Internet.

11th -- 14th May. (3 nights) The Azalea & Rhododendron Rally, Exbury Gardens, Hants.

Emergency Tel no 07745 522 335 Marshalls Mobile.

Rally Marshalls: Mo & Mike Valentine + Angie & Andy Cavell.

Site Fee £7.00 per night + Rally Fee £2.35 per unit. Both include VAT.

Rally Slips & cheques payable to A. Cavell and send to Mr. & Mrs. A. Cavell, 24 The Close, Hampstead Norreys, Thatcham, Berks. RG18 0RY. Tel.No. 01635 201976.

Green Field Site, own facilities essential. Fresh water, elsan emptying point. There may be cow and horse muck on the field. Dogs on leads at all times (sheep about).

Attractions: The flowers of Exbury Gardens & Steam Railway, The New Forest, Historic Beaulieu, The National Motor Museum, views of the Isle of Wight and the Solent. Shops 3/4 miles away. Approx.20 minutes drive from M27.

Directions: From M3 join the M27 westbound. Exit Junction 2 onto A36, sign-posted Beaulieu Motor Museum. Continue straight over 6 roundabouts. At 7th turn **right** onto B3054, sign-posted Exbury Gardens. At the junction, by Royal Oak pub, turn **left**, immediately **right**, signposted to Exbury Gardens. After 2.5 miles by the Gardens, (on right), continue on until sharp left turn, go straight, along narrow road. Approx 1 mile turn right onto gravel path, site on left 150 yds.

Please do not arrive before 14.00 hrs. and leave by 12.00 hrs. Monday.

17th -21st May (4 nights) Little Cotton Farm, C.P., Dartmouth.

Site Tel.No.01803 832558.Fax 01803 834887.Website:-www.littlecotton.co.uk

Any additional nights should be booked with the owners Paul & Dot White.

Rally Marshalls:-Richard & Jill McAllister, assisted by John & Rita Tubb.

Site Fees:- Basic pitch £8.25(no electric) per unit per night.

Standard pitch:-£10.50 (includes electric) per unit per night.

Rally Fee:- £3.00 couples. £1.50 singles. All include VAT.

Booking slips & cheques payable to R.J.McAllister with SAE to "Milesway" Steart Drive, Burnham on Sea. TA8 1BZ. Tel.No. 01278 781976.

The site has an award winning toilet shower complex with disabled facilities.

Dishwashing area, launderette style washing machines & large tumble dryers & ironing boards are available.

Dogs are welcome but they **MUST** use the dog walk on site and be **KEPT** on the lead on site.

There is a well stocked shop, papers must be ordered the day before.

Attractions: The site is adjacent to the Park & Ride bus service into Dartmouth (tickets available at the camp shop).

This will be the 10th year of the Dartmouth Music Festival held from Friday 18th to Sunday 20th. There are plenty of boat trips operating out of Dartmouth, either up river to Totnes or out to sea. One boat trip goes to Greenway Quay from where you can visit Greenway House & Gardens (NT) one time home of Agatha Christie. There are other NT properties in the area. Two local steam trains operate from Kingswear to Paignton & Totnes to Buckfastleigh.

Please DO NOT arrive before Noon. Limited to 32 vans.

16th - 21st May (5 nights) Ambleside Rugby Club, Ambleside, Cumbria

THIS RALLY IS NOW FULL

21st - 24th May (3 nights) Camping & Caravanning Club Site, Ravenglass, Cumbria.

THIS RALLY IS NOW FULL

18th - 21st May (3 nights) Canterbury Kent.(Camping and Caravanning Club site)

Emergency telephone number 07803 238878 (marshal's mobile).

Rally Marshals Joy & Nigel Wilkins and Karen & Mike Ryman.

Site fee £8-70 per night. Rally fee £ 1-50 per person.

Electricity £2-75 per night. Please request if required, and pay for on arrival, as not sure how many pitches will have hook-ups..

Rally slips and cheques made payable to Joy Wilkins 13 Oakfield Road, Kennington, Ashford, Kent, TN24 9LL.Tel.No. 01233 620204.

Directions, for members not having a C&CC site book. Leave Canterbury on A257 signposted Sandwich, 1 mile from city centre, opposite Canterbury golf club, turn right signposted Bekesbourne plus C-C-site sign, site on **right**.

Attractions, Canterbury Cathedral, Howletts & Port Lympne Zoo parks.

Rally limit 20 vans but might be able to increase.

Rally starts at 12 noon.

31st May-4rd June. (4 nights).Springbok Estate,Alfold,Surrey.

Site Tel.No. 01403 752555 (Emergencies only).

Rally Marshals: Sylvia & Norman Brice.

Site Fee:£5.50 per night. NO Electricity. Rally Fee:£2.50 couples,£1.50 singlers Incl VAT.

GREENFIELD SITE Toilet emptying & water points, toilet & shower.

Rally slips & cheques payable to Mrs. S.Brice,35 Halfpenny Close,Chilworth, Guildford, Surrey GU4 8NH.Tel.No. 01483 562986.

Attractions:Large country house (home to merchant seaman) with social club.Close to Alfold Village,20 min. walk for papers,bread etc.Lots of gentle walks around the ground of Springbok.Fishing lakes,bring your licence.Within easy reach of Cranleigh,Guildford, Godalming,Horsham & the south coast.

Skittles & buffet evening to be arranged for Friday.Please indicate on slip if interested. Model boat weekend on lake.

Dogs welcome on leads at all times. Levelling blocks maybe required.

Directions:Take A281 Guildford to Horsham road,at Alfold crossways turn off s.p.Alfold. Immediately turn **right** (caravan sign) s.p.Dunsfold.Site approx. 1 1/2 miles

June 14th - 18th (4 Nights) Hurley Riverside Park, Hurley, Maidenhead, Berkshire SL6 5NE

Site Tel:-01628 824493 Website:- hurleyriversidepark.co.uk

Emergency Tel. No.07754 761423 or 07803 033942 Marshals' Mobiles.

Rally marshals:Rita & John Tubb, Shirley & Chris Sturgeon and Theresa & Dave Smith.

Site Fees £44.00 including Electric for four nights. Rally Fee £2.35 all charges include VAT.

Please send a C5 162mm x 229mm (6 x 9) SAE for full directions and

confirmation, with rally slip and cheque for **£46.35** payable to Rita Tubb 70

Charnwood Crescent, Chandlers Ford, Eastleigh Hampshire SO53 5QL Telephone 023 8026 7294

The rally is on a commercial site with full facilities, all pitches have electric and there is a laundrette, hot showers, toilets, CDP and a shop with provisions and papers available.

The site is situated beside the River Thames with fishing available. There are two pubs serving food near to the site. Hurley village is about 1/2 mile from the site with pubs, shop and post office.

You can walk or cycle the Thames Way path towards Marlow or Henley from the site.

The site is situated on the A4130 between Henley on Thames and Maidenhead.

Limit of 25 vans

PLEASE DO NOT ARRIVE BEFORE 12.00 NOON

(iii.)

15th-18th June 2007 (3 nights) Cartmel Park Race Course, Cartmel, Cumbria LA11 6QF

Rally Marshals: James & Jill Bertlin

Site Fee: £21.00 (3 nights). Electricity £8.25 (3 nights) - limited to 15 vans, long leads may be required. Rally Fee: £2.35 (all charges include VAT)

Booking slips and cheques to Jill Bertlin, The Rockeries, Lindale, Grange-over-Sands, Cumbria LA11 6LQ. Tel. No. 015395 34500 (mobile: 07710 200547)

Rally field slightly uneven in places. Toilets & showers on site. Dogs are welcome, but as with Ralliers, they are not permitted on the racecourse track. A simple BBQ and pudding has been arranged for Sunday evening (provide own salad if required). Please indicate if interested on rally slip.

Local Attractions: Cartmel village is a maze of streets, cobbled pavements and picturesque bridges, crossing the meandering streams that wind their way amongst the houses with a Priory, which was founded by the Augustine Monks back in 1190. It has an historic market square, surrounded by centuries old houses and Inns, the ancient fish slabs still survive and also the original Gatehouse. Nowadays Cartmel is full of interesting shops, selling most things including the famous sticky toffee pudding.

Close to the Edwardian resort of Grange-over-Sands and within a short drive of the renowned beauty of the Lake District National Park, offering some of the most spectacular scenery in the country with opportunities for walking, golfing, cruising or just sightseeing.

Directions: From M6 Junction 36 follow A590 towards Barrow in Furness for approx 10 miles.

Follow Cartmel signs (along narrow lanes) through village square. Do NOT continue into Car Park, but follow road to the right of the Cartmel Village shop (**sharp right hand bend**). Entrance to rally field along road on **left** through Race Course gate

20th - 24th June. (4 nights) Lochside CP, Castle Douglas, Dumfries & Galloway.

Rally Marshals: Moira & Allan Blackstock

Emergency Phone Nos. 07891740186 or 07969312703 (marshals' mobiles)

Site Fees: Pitch only £8.00pn. With electricity £10.00pn. Rally fee: Couple £3.50

Single £1.75 all inclusive of VAT.

Attractions: Site is on the loch side and a few minutes walk from the town.

Situated on the Dumfries-Stranraer and Ayr bus routes or an easy drive to the Solway Coast or the Galloway Hills. The area caters for Historical, Horticultural, Artistic and Outdoor Interests.

A hall has been booked for evening social gatherings and it is hoped a meal will be available on one evening.

Please send an SAE for confirmation and directions along with your rally booking slip and cheque to :A & M Blackstock, 39 Sumpter Croft, Penwortham, Preston, PR1 9UJ.Tel.No.01772749178.

29th June to 3rd July. (4 nights) Rocester, Staffordshire & JCB Factory.

Rally Marshals are Peter Brown, Chris Mawdsley, Jeanne & Mike Hall.

Emergency mobiles (during the rally only please) Mike 07939 288586/ Peter 07771 827711.

Site fee £4 per van per night. Rally fee £1.20 per person.

Contact Number Chris 07919 538622.

The site is in the grounds of Rocester Football Club, a greenfield site with no electricity. Toilets and basic showers available when club house is open. A visit to the JCB factory has been arranged for Monday 2nd July commencing 10:00 followed by lunch.

Booking slips and cheques to Chris Mawdsley, 5 Kenilworth Walk, Cheadle, Staffs. ST10 1WA.

Please book and pay for the tour and the lunch on your booking slip and please itemise what and

how many you are booking for. JCB tour £5 per person for senior citizens; £7 per person all others. Lunch, served at 12:00, is £10 per head in the restaurant.

Local attractions include Croxden Abbey, Ashbourne, Dove Dale and the Peak District. The tour covers approximately 3 miles and is on foot, casual dress is suggested and sensible shoes must be worn. **Open toed shoes will not be allowed on the factory floor.**

Directions: Rocester is north of Uttoxeter. From A50 turn north onto B5030. When you see the JCB factory on your left turn right towards Rocester. Over the bridge, follow the high street to a mini roundabout, turn **right** into Mill Street and wend you way to the outskirts. As you leave the town you will see Rocester FC ground on the **left**.

2nd -6th July (4Nights) Ledbury Rugby Football Club, Herefordshire.

Emergency tel 077915882 Max, 07989153109 Joan.

Marshals Joan & Max Cooke & Shelia & Ivor Barnett.

Site fees £7-50 per night Rally Fee £2.35 (inc vat) NO ELECTRICITY.

Drinking water, waste water facilities, dog walking on site.

Use of club facilities--toilet & showers. We also have use of the bar.

Please include an **S.A.E.** for confirmation & directions. Please indicate if you require a meal.

Booking slip and cheques payable to:- J.E. COOKE The Magnolias, Canon Pyon Road, Hereford HR4 7RB Tel 01432 274906.

Directions . For the Rugby Club (**HR8 2LP**) leave the M50 at junction 2 take the A417 to Ledbury. The Rugby Club is off the roundabout on A449 to Much Marcle.

Limit of 35 vans.

6th -8th July (2 nights). Prestwood Steam Fair, Great Missenden, Bucks.

Emergency Tel.No. 07775570182 or 07749378587.

Rally Marshals:-Jan & Vic Hicklin, & Margaret & Bob Cleaver.

Fee for weekend £17 per unit. NO ELECTRICITY. Rally fee:-£1.75 per unit. (Incl.VAT).

The fee includes unlimited entrance to the Steam Rally.

This is a **GREEN FIELD SITE** - own toilets are essential.

Rally slips & cheques to Mrs.J.Hicklin, 381 Manor Road, Brimington, Chesterfield, Derbyshire. S43 1PP. Tel.No. 01246 236157. **Any enquiries May 29th -June 27th. S.Atherton, 01246 208878.**

Directions: From A413 Great Missenden take A4128 to Prestwood and follow Steam Rally signs..

NO arrivals before 1.00p.m. Friday.

12th. -15th. July Midsummer Music & Leisure Show, Lincolnshire Showground, Lincoln.

Emergency Tel. No. 07711 271568 Marshal's mobile.

Rally Marshal: Liz Irvin, .

Please send **SAE**. with rally slip and rally fee of £2.00 couples, £1.50 singles per unit, **for the Warners booking form** to Mrs E Irvin, 43 School Lane, Kirk Ella, Hull, East Yorks. HU10 7NP.

Tel. No. 01482 658345. E-mail irvin@irvin.karoo.co.uk

Booking forms to be returned to Warners **before 25th June**. If booking on the Internet, or with another form, mark form ASOC, and send rally slip to marshal. Site fees: arrive Thursday £19 arrive Friday £16, arrive Saturday £14. Rally starts 2pm Thursday and closes 12 noon Sunday, but you may stay on site until 12 noon Monday.

19th – 22nd July 2007 (3 nights) Beacon Park, Lichfield, Staffordshire.

Rally Marshals Ted & Trish Pratt & Vic & Jan Hicklin.

Emergency tel no. Marshals' mobile 07713186508.

Site Fee £4.50 per night inc. VAT Rally fee £2.35 inc. vat. NO Electricity.

Booking slips and cheques payable to P.M.Pratt, 3 Grafton Rd., Stapenhill Burton on Trent, Staffs. DE15 9DN. PHONE 01283538818.

You may arrive on Thurs AFTER 12 noon NOT BEFORE PLEASE (this is virtually a **green field** site although there are toilets in Beacon Park).

Sat evening get together includes Jacket potato, dessert and drink - **£4.50 Per person. Pay with booking slip.**

Attractions:- Beacon Park is adjacent to Lichfield City centre.

Directions:- Beacon Park is situated in Lichfield, just off the A51 Tamworth to Rugeley Road. Go round the island with the Bowling Green Pub in the middle. Then take A 51 Rugeley/Stafford Road; turn immediately right down Walsall Road, then immediately left into Lower Sandford Street. Follow signs for Car Park, the site is through the car park keeping to the right.

ADVANCE NOTICE.

15th – 19th August (4 nights*) – Open Air Concert Rally. Three Counties

Showground, Malvern

Emergency telephone 07879 473434 (Marshal's mobile.)

Rally marshals: Dorothy & Baz Wellard; assisted by Marian & Jimmy Henwood.

Fees: Site fees 4 nights £25 or £8.50 per night (**option to stay over Sunday night – free!*) Rally fee: £2.50 for two or £ 1.75 single. Concert fee(s) Group pre-booked £18 per adult (£26 on the night) or 2 day ticket £33 per person. Ralliers will be expected to attend at least **one** of the concerts, please.

Rally slips and cheques for rally, and the concerts, payable to Mrs. D Wellard, 18 Greenwood Close, Fareham, Hants, PO16 7UF. If you only wish to go to 1 concert please indicate which one. Tickets will be issued at the rally. SAE please if you wish to receive confirmation.

Attractions: The Malvern Showground's open-air concert celebrates its tenth anniversary in 2007, and is extending it to 2 nights for the very first time. Also for the first time they have agreed to let us run a rally for members who wish to attend either or both great concerts. Malvern is also an ideal centre to visit the local countryside and attractions.

Friday 17th Bootleg Beatles: The world's first tribute band, the Bootleg Beatles will be the star attraction on Friday. A multi media spectacular, featuring all the classic Beatle hits.

Saturday 18th Tribute to Elgar: Compered by Angela Rippon, the English Symphony Orchestra and Fine Arts Brass will be performing an Elgar tribute, to celebrate the 150th anniversary of his birth, with other popular classics, culminating in spectacular fireworks and cannon fire.

If you wish to run a rally in 2007 please contact me to check dates before booking with a site. This prevents any clash of dates.

.A "Guide to New/Possible Marshals" is available. If you would like one please contact me, details below. It is important that all potential rally dates and venues are checked with me first as unless they are approved by the Club, there will be no Public Liability Insurance.

Neil C. Rogers
3 Appleby Close,
Aldbrough St. John,
Richmond,
North Yorks,
DL11 7TT.

Tel./Fax. No. 01325 374 540 E-Mail. ncr@nasuwt.net
E & OE

After some 38 years caravanning, sadly my wife suffered double fracture of femurs and with the effects of some twenty years of osteoporosis taking its toll we were forced to give up caravanning.

For a year we were most frustrated as even visits to our daughter meant special arrangement for a bed downstairs to enable a transfer from the wheelchair. Then during a casual visit to the local Caravan Dealer we discussed the possibilities of a Motorhome with a side opening door which might permit entrance by wheelchair, but none were available at that time. However, within a couple of months a phone call from the dealer informed us that an 2001 Auto Sleeper "Symbol" had become available with very low mileage.

Unfortunately my wife could only manage a transfer through the sliding door and sat on the floor to inspect, but immediately fell in love with the habitation furniture and curtains etc, but could it be converted to enable wheelchair access? And could said wheelchair be stowed between the passenger and drivers seats at night.

I made many modification that enabled three years of tours both home and abroad and more important facilities to allow visits to the family. Now on my own, I have sold Peugeot Y 742 YBK with its 2 litre petrol engine, but somewhere in the Barron's Group I hope another couple who may have a disabled partner will benefit. I would be happy to correspond with any members who would like more information on this subject.

Roy Newbury
Email: rnewbury292@btinternet.com

Roy sent a lengthy list of additions/modification he made to improve access and usability, do contact him to hear more.

Please see the For Sale section for a number of items that Roy wishes to sell.

From the Factory

This month we are pleased to start with the announcement of a new model being added to the Auto-Sleeper stable. We have been secretly working on a long wheel base 3500kg rear lounge Peugeot van conversion. It gives us great pleasure to advise you all that prototyping has been completed all tests, homologation and certification process is in hand. This vehicle will be known as the 'Warwick' and production will commence late May early June for delivery mid end June /early July. We will be officially launching this vehicle at the Caravan Club Centenary Rally at Blenheim Palace 25-29 May 2007, along with the new Symbol. This is an exciting new development that fits perfectly within the Auto-Sleepers product range.

Thorough costing exercises are still being undertaken with regards to the future Monocoque project, however there is still a chance for you to buy one of the last few remaining Talisman & Executive LE monocoque models. At the time of writing we only have 6

vehicles left for sale out with our dealers so if you are interested please contact the Sales Office at the factory for details of your local dealer, tel: 01386 853338.

From Charles and the team at the Service Centre, we have good news that they have now been awarded Fiat Servicing Accreditation. This means that they are able to undertake Fiat mechanical work within the Fiat warranty period. Specialised equipment has been ordered and will be with the Service Centre in the next couple of months.

Also from the Service Centre they would like to extend a **Special Offer** on roof mounted Air Conditioning and Reversing Aids in conjunction with Waeco to all Club members. Save £100's by contacting the Service Centre now on 01386 853511.

Showtime – we've been advised that the London Caravan & Outdoor Show at ExCel, London has now been cancelled. Another date to add to your show calendar is the London

Caravan and Motorhome Show
at Earls Court 15-18 November
2007.

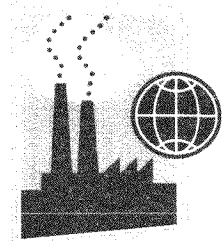
This will be a new dealer show
and therefore Auto-Sleepers
won't be taking a stand there
but will be supporting dealers
with product at the event. For
more details visit
www.caravanshows.com.

We are pleased to announce
another new dealer has been
appointed for Orian
Motorhomes - Capel Dewi

Motorhomes, Capel Dewi,
Aberystwyth, Ceredigion SY23
3HR, Tel: 01970 820501.
www.capeldewicars.co.uk.

We look forward to seeing you
all at the National Rally at
Newark!

Emma Franklin



ASOC Newsletters for Auction

I have ASOC Newsletters 1—184 and 7 blue binders looking for homes. If anyone is interested in either of these they are available to the highest bidders, any money raised to go to the Club's nominated charity Guillain Barrie Syndrome Support Group. Please send bids to Asocletters@aol.com. I am sorry, but I shall have to charge post and packaging for these items unless we can find an alternative delivery method. Aproximately £9.50 for the Newsletters and £4.50 for the binders.

I shall look forward to hearing from you.
Louise Storey.

When Louise advises you that you are the successful bidder you should arrange delivery direct with Louise and send a cheque for your bid amount to the Newsletter Editor and made payable to Auto-Sleeper Owners Club. We will advise receipt of cheque to Louise and she can then send you the Newsletters and Binders.

Obsessive-Compulsive Disorder or just being fussy?

Alan Waugh

In February our Symbol celebrated its 5th birthday and as a present we bought it a set of new tyres, just before its MOT. I'm sure we all read about motorhome tyres in various magazines [Not to mention Newsletters], about how they deteriorate more through lack of use than overuse. Well, having suffered an inexplicable rear tyre blow-out at 70 mph in lane 3 of the M5 last year it set us thinking, hence the purchase of 4 new Michelin tyres.

Now, ever since purchasing our van, I have been fussy about all the irritating little rattles as we travel along; the roads in Ireland severely putting my fussiness to the rest!! Even our fridge door had worked loose after that trip. I'm sure many of you have done the same sorts of things to cure the worst rattles: a little felt pad here, a bit of blutak there, etc. I even got a help sheet from our splendid ASOC Technical Team about rattles from blinds. Gradually the cacophony has been reduced, but never obliterated.

Let me now come to the denouement of my story, and this is where the above comes together. At long last the rattles have subsided to something approaching acceptable!! How? By replacing the Firestone tyres (supplied originally by Peugeot) with Michelin ones. We now have a much softer ride, so those things prone to rattle have less cause to get excited! It might be said to be a drastic way of reducing rattles by forking out for a new set of tyres, but given the necessity to do so, we have had a very pleasing trade off.

So, obsessive-compulsive disorder, or just fussy about rattles? I leave it to you to decide, but whatever, it's now cured.

Further to the above from Alan he confirms that he uses the same pressure on his new tyres as he did on his old (pressures that he eventually determined himself, much as I described last month!)

I also met a club member in The Dordogne a couple of years ago (Peter, I think?) who reported a much improved ride with Michelins.

In the last few months I have met so many people who have personally had 'blow outs' on their Motorhomes that I want to again stress the need for diligent 'tyre care'.

Popular subject tyres...

Tyre pressures and valves

David Maddison-Roberts

My partner and I acted for a tyre manufacturer sued because tyres had come off rims. We thought the Judge was impressed by evidence that the likely cause was under inflation, not defective tyres, so thank you for stressing the importance of maintaining at least minimum tyre pressures.

Although inflated to pressures recommended by Michelin of less than 60psi, the valve of a rear tyre left uncovered on a drive in the midday sun exploded, deflating the tyre, so metal valves might be appropriate for lesser pressures.

David also give a couple of examples from his own experience that demonstrate that Motorhome and Commercial Vehicle dealerships cannot always be relied on to give accurate advice—I agree and always apply the 'common sense' test to anything I'm told.

*Now here's a rare
bird....*

An AS Luxor

[Spotted at the Burton
Rally]





Guess the rally?

Chris Mawdsley

Hardly 'Mastermind', but if you've never been to the rally at Burton-on-Trent you really are missing something. As usual, Trish and Ted Pratt, ably assisted by Vic and Jan Hickling and one or two others, organised very good week-end, with even the weather obliging.

The week-end started with a panic 'phone call to check on the start time of the rally (we were already on the road and hadn't checked!). As Peter had been in trouble with Trish the last time we were on this rally 2 years ago for not getting things right, he didn't want to turn up at 12 if the rally didn't start until later!! But no, that was ok and we duly arrived just after 12 noon.

We spent time meeting old friends and getting to know new ones, enjoying excellent meals, both at the Visitors Centre at Marstons and the Albion Hotel (in whose car park we stay) on Friday night and Saturday night respectively. Another few pounds gained no doubt!

Peter and I didn't go around the Marston's Brewery this time, as we had done it previously, although I'm sure we'll do a refresher at some time in the future - it really is interesting. However, this time John Hill, Peter and I did, what John and I were told by Peter, would be an 8 mile walk to Faulds Crater. For those not



familiar with the area, this crater was caused by 'the largest explosion of conventional weapons in both world wars'. It was the site of a munitions dump during the Second World War and exploded accidentally, killing 70 people, mostly civilians judging by the memorial plaque at the site.

It was an excellent walk in excellent weather, although it turned out to be 12½ miles not 8 and the refresher taken at the pub was *very* welcome.



It was also a milestone birthday for Pat Wanklin and as you can see, the van was suitably dressed for the occasion. Happy Birthday Pat.

The week-end was rounded off with coffee in the Marston's Social Club, so not only a very big thank you to Trish and the Team, but also to Marstons for use of their excellent facilities, and the Visitor Centre staff for their friendly, efficient service on Friday night.

Here's hoping Trish & Ted can fit it into their very busy schedule next year.

Quality of Motorhom Servicing

Prompted by the piece in the April Newsletter (Talisman Leaky Woes), Tony Rae has written to us regarding problems with water ingress on his Executive. The problem came to light after very heavy rainfall in Spain and with the help of a retired window fitter sharing the site was traced to the bracket holding an awning that had recently been fitted. The bracket was sealed, tested (and more so by rain later in the holiday) and found to be watertight.

On return to the UK and seeking a permanent repair Tony was advised that it was the window leaking and he had to pay over a £100 to have it resealed. On having inspected the vehicle on its return to him he does not believe the window was the problem and he is also of the opinion that work associated with this leak repair was bodged. He says he has lost confidence in both the vehicle and the support it receives.

I would like to add that reports from members of dissatisfaction with Motorhome Servicing and Repair seem to peak at this time of year as another seasons camping gets underway however surely there must be some satisfied customers in the Club who can send us stories full of praise and success!!

Chairman's Chat



So there we were motoring gently through the Cotswolds when the mobile rings. Being a good boy, I left my passenger to answer it. "It's Peter" she said "he wants to know if you are doing a chat this month". I won't tell you what I said but it indicated displeasure at my forgetfulness!

We were actually driving home from a morning at the factory looking at new fabrics for the next round of vans from September onwards. Apparently dealers prefer motorhome manufacturers to change their fabrics every year to keep new vehicles looking fresh and different. Auto-Sleepers have agreed to go along with this process, which is also preferred by the fabric suppliers. They need to have four fabric choices for the Auto-Sleeper range, two for Orian and one or two more for the Marquis special models.

First stage in the process is for Simon Vaughan to spend time with the first supplier visiting the mills in Belgium where the fabrics are made. Here the choice is narrowed down from hundreds to about thirty. Samples of these are brought back to Willersey where internal consultation brings that number down to the fifteen or so we had been looking at. At the same time, selected dealers are also invited to put forward their comments and a short list is drawn up.

Then the process is repeated for the other two suppliers!

Finally the selected fabrics are made up into sample interiors to see how they look in real life. This is where the surprises can come. Something which has been a hot favourite as a fabric just doesn't look right when it is made up, so maybe one that had been rejected needs to be put back on the list

Ultimately, the selection is made and the new fabrics will make their first appearance at the NEC in October. It makes choosing the fabric for our van seem a simple process!

Andy Cavell

Name That Van

A 'Lite Bite' on nutrition

1. Berkshire
2. Midas
3. Lancashire
4. Gatcombe
5. Symbol
6. Trooper
7. Windsor
8. Legend
9. Sussex
10. Rambler
11. Trident
12. Talisman
13. Wilton
14. Harmony
15. Topaz
16. Amethyst
17. Symphony
18. Inca
19. Trophy
20. Omega

Japanese eat very little fat and suffer fewer heart attacks than us.

Mexicans eat a lot of fat and suffer fewer heart attacks than us.

Chinese drink very little red wine and suffer fewer heart attacks than us.

Italians drink excessive amounts of red wine and suffer fewer heart attacks than us.

Germans drink beer and eat lots of sausages and fats and suffer fewer heart attacks than us.

Conclusion? Eat and drink what you like, it's obviously speaking English that kills you.



Telescopic ramps.
Electric Winch complete with remote control and safety devices.
Miniature Halogen 12v

Reading Lamps
Electric Motors for cab windows
Hi-fi System with remote control.
Privacy screen (shower room)
Various cushions.
Baggage Trailer
Protoc Cover.

Contact Roy Newbury
rnewbury292@btinternet.com

OMNI-BIKE + rack. Fits rear door of VW T4. Two channels for wheels, one swivel clamp.
£50 ono
Contact Isabelle Wadcock

01525 370630 eve. & w-e
(Bedfordshire)

Thanks for donation
Silver Screen for VW T5. Bought last year, never used. **£59.**
Contact Stephen Green 01323 841899 (East Sussex)

Thanks for donation

Multimo Satellite Dish with tripod. Zehnder Sat Finder, manual, cable & fittings **£90.**

Bush 14" colour TV **£20.**
Grundig Sky Digibox with remote and viewing card. No subscription required. **£35.** All VGC.

Contact Brian Leonard 01634 234694 (Kent)

Thanks for donation

Contents

From the Editors	2	ASOC Newsletters for Auction ...	13
National Rally 2007	3	Obsessive-Compulsive Disorder? ...	14
Name that Van	3	Tyre Pressures and Valves ...	15
Rita's Potty Problem	4	A rare bird	15
My Apologies	6	Guess the rally	16
Seeking the (winter) sun	7	Quality of Motorhome Servicing ...	17
Technical Group & Website	9	Chairman's Chat	18
Great Value from the Ideas Sheets ...	9	Answers	19
Disability Forum	10	A 'lite bite' on nutrition	19
From the Factory... ..	12	For Sale	19

Committee Members

President	Charles Trevelyan	01386 853511
Chairman	Andy Cavell	01635 201976
Secretary	Janet Sutterby	01507 462449
Treasurer	John Tidbury	01235 538593
Vice-Chairman	Mike Valentine	02392 482818
Chairman, AGM Sub-Committee	Nora Venables	01902 332105
Rally Co-ordinator	Neil Rogers	01325 374540
Minutes Secretary	Mike Hall	01773 778016
Chief Rally Marshall	Ben Mansfield	01723 369769
Webmaster & Chair, Tech.Group	Baz Wellard	01329 231259
Regalia Officer	John Jones	01623 627903
Membership Secretary**	Norma Caley	01772 632734
Newsletter Editor	Peter Brown	07771 827711

Any item appearing in this Newsletter may be freely used by other publications. Please acknowledge both author and source.

Items for the Newsletter **MUST** reach your Editor by the **TENTH** of the month. You may post them to 5 Kenilworth Walk, Cheadle, Stoke-on-Trent ST10 1WA or e-mail to petercb1952-asocnews@yahoo.co.uk.

The Editor reserves the right to edit or omit items. Advertisements for items to be sold or wanted by members are published free of charge, however, small donations to Club funds are appreciated and will be acknowledged. No guarantee can be given that any item will appear in the next, or any, issue of the Newsletter. Cheques should be made payable to 'Auto-Sleeper Owners' Club' and NOT TO ASOC.

IMPORTANT: Contributions from Members are published in good faith in the hope that they will prove useful or interesting. All reasonable care has been taken to ensure accuracy but no modification or suggestion has been tested by the Company, the Club or your Editor. Therefore no warranties are expressed or implied nor indemnities given. You try them out at your own risk.

**Norma Caley's address is 17 Rydal Avenue, Freckleton, Preston, Lancashire, PR4 1DJ, e-mail is normacaley@tiscali.co.uk.