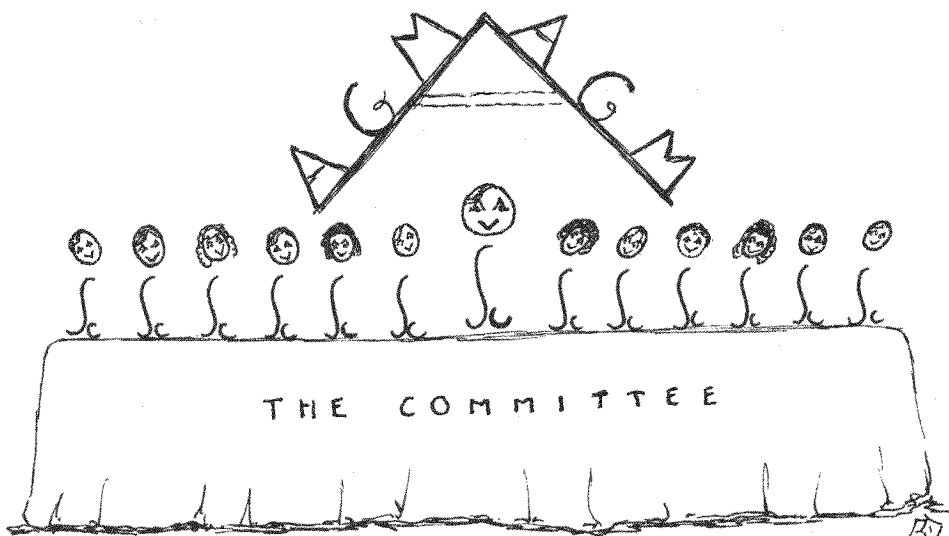


**AUTO-SLEEPER  
OWNERS' CLUB**



← VICE  
PRESIDENTS!

**NEWSLETTER 67**

**APRIL 1994**

Hello.

First of all, yet more apologies! First from the print room. Due to an outbreak of mixa-ma-fingers, the telephone number for the *Lucas's* was given incorrectly in the Rally Supplement last month (that's the Isle of Avalon Rally). The dialling code should have been 0424 followed by 753 631 and NOT as shown. In addition, the electricity is separate from the site fee but if you are attending for the week you may have electricity for only part of the time if you wish. For further information dial the marshals (on the correct number).

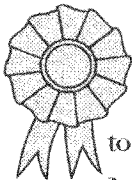
Next, I have been advised that our Chairman has received a letter from our President which told him that the dealers from Japan had postponed their visit and would not now be coming to see the Honeybourne rally. It is possible that they may come around later in the year but we shall have to wait and see.

And finally, I hope, a letter from Robsons of Wolsingham in Weardale to tell me that it was Mike Rapp, their Vehicle Sales Manager, who responded to *Joan and Len Baldwin* in their search for a Clubman handbook. As the letter suggested, I am very happy to give credit exactly where it is due and I thank Robsons for bringing this to my notice.

Thanks to *Derek Robbins* for a donation received in respect of a "For Sale" advert in the December Newsletter. As I have (very) often said a donation is not required - but it is acceptable with thanks!

---==ooo000ooo===---

## WHEEL TRIMS AND POWER STEERING



I expect a number of our fellow members will remember me canvassing help and advice regarding suppliers of wheel trims that don't go walkabout and for information regarding the retrofitting of power steering for a 1991 Rambler on the restyled Talbot Express van. I am pleased to tell you that these problems have been resolved by :-

1. AutoMate, 2 Bleak Street, Gomersal, Cleckheaton, West Yorkshire. BD19 4RD, tel: 0274 862 700 who supply a bolt on version namely 14" White Challenger Wheel Trims.

2. SVO Ltd, Lottage Road, Aldbourne, Nr. Marlborough, Wilts. SN8 2EB, tel: 0672 40 001. This firm offers a first class service for fitting power steering to most base vehicles and whilst it is a pricey exercise the result is far beyond my expectations. The previously heavy

steering has been completely changed and the vehicle is a "dream" to drive. Don't, however, be fooled by higher quotations from other firms as it appears the fitting is carried out by SVO Ltd. anyway. [See next item, too - Ed.]

Now that I have got pen to paper perhaps I can tell you about other goodies that I have fitted to "improve" an otherwise superb conversion.

Electric door locks (front doors) operating when alarm equipment is set (sliding door about to be similarly fitted).

Electric windows (front doors) which also shut automatically when the alarm equipment is set.

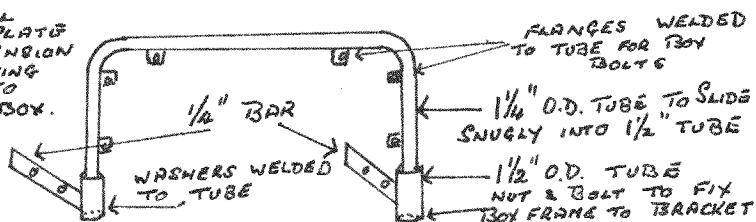
Equipment for these supplied by Jeremy Clayton, Poole Clayton Automotive Ltd. 4 Prince Close, Walworth Industrial Estate, Andover, Hants SP10 5LL, tel: 0264 334 277. An extremely helpful Company.

A 40 litre gas tank slung under the chassis to avoid the hassle of cylinder transportation and to give more storage in gas compartment etc for other items. It comes as a complete kit with electronic gas indicator and filler hose with connector which bolts on to the side of the van chassis. Equipment supplied by Gordon Wise, Tartarini Ltd, Carlton Miniott, Thirsk, N. Yorks. YO7 4NJ, Tel: 0845 523 213. Southern Rep. Bernard Armitage, 205, Main Road, Biggin Hill, Westerham, Kent, TN16 3JV, Tel: 0959 576 077. Again most helpful.

It gives one peace of mind to discuss gas problems with two people recognised as experts in the UK and in the forefront of supplying and fitting portable gas equipment. There are lists available where bulk LPG is stocked. After installing the cylinder I had an independent pressure test by a local firm which is an essential part of the fitting. We have experienced no difficulty in finding a gas supplier both here and on the continent.

As we seem to travel with the kitchen sink storage has been a problem but this has been solved by adding a removable fibre glass box fitted to the rear of the van. It has been fixed by fabricating steel brackets which bolt on to the points where the original rear bumper bar was fitted.

ADDITIONAL NUMBER PLATE AND EXTENSION LIGHT FITTING BOLTED TO REAR OF BOX.



The 'U' shaped tube, which slots into the aforementioned brackets, is bolted to the fibreglass box with strengthening plates inside for each nut and bolt. The box is then fitted so that it can rest on the rear step. A larger platform can be fitted, if necessary, on to the step.

The box is supplied in two sizes 44'x26'x14' and 36'x26'x14' and we had the larger size. The supplier is Reinforced Construction (Leicester) Ltd., Units 2/2a, Beaumont Street, Oadby, Leicester. LE2 4DB, tel: 0533 718 391.

We have always been aware that the vehicle sat very heavily on its rear suspension and after fully loading the box we felt that some remedy was required to raise the rear of the vehicle. This was achieved by fitting MAD Assister springs which come in two versions Normal and Heavy Duty. We opted for the Heavy Duty which were slightly more expensive. When fitted these improved the rear suspension considerably and also the vehicle performance with regard to its handling. Even without the box they would be well worth installing.

Equipment supplied by Ashley Banks Ltd. 5 King Street Estate, Langtoft, Peterborough, PE6 9NF, tel: 0778 560 651.

The foregoing improvements have been achieved over a period of about 2 years and I have undertaken all the actual installation work myself (with able assistance from 'Deidre's Mum a.k.a. the tea lady). [The Tea Lady is sometimes referred to as *Stella* - Ed!] I have been greatly appreciative of all the help and advice freely given by the various suppliers and the members whom I have approached. The end result is an excellent vehicle improved to an even higher standard of comfort and reliability. (Until the tea lady thinks of something else.)

If any member would like to discuss the above please write to the editor who, I have no doubt, will be happy to pass on enquiries.

I have threatened you with this letter for some time and as it is raining yet again it was a good opportunity to get it out of my system - I rest my case and my weary bones also. Now I am thinking of taking 'Deidre' and the tea lady to Iceland. Has anyone made this trip? If so we would appreciate their thoughts on the actual journey.

Happy Camping,

*Bob Fryer.*

#####

## THE SVO EXPERIENCE.

SVO Ltd. are well known for their Specialised Vehicle Options for the disabled. Most of their trade is in the field of special ramps for wheel chairs, hand controls in place of foot controls and similar work. Their work with fitting Power Assisted Steering may not be so well known, but is of special interest to people like me who had a little difficulty handling the somewhat heavy steering of the Talbot-Express when manoeuvring. I am by no means disabled but I did find the steering took a lot of the pleasure out of 'Rambling'. Apart from a consideration of finance, about £1,550 plus VAT, there is now no obstacle to having this cured. Ring SVO, on 0672 40 001, and Teresa will fix up a date, probably a week or two away because the parts have to be ordered from Italy. She will also advise you about accommodation in the area if you need it while the job is being done. There is a hotel in the small village of Aldbourne, but you might prefer one in the larger town of Marlborough or even Swindon.

We arrived mid-afternoon on a Wednesday and were taken to our hotel in Aldbourne. I am not certain, but I had the feeling that Teresa would willingly have run us into one of the nearby towns had we been staying there. On Thursday we spent an enjoyable day in the area, in spite of the rain, and were delighted to discover that the van was ready for us late that afternoon. We had a brief trial run, all was well, paid our money and were soon back on our way to Market Harborough.

Does it work? That of course is the question. The road from Swindon to Northampton has innumerable roundabouts which gave me a chance to appreciate its virtues to the full. At first I had to watch that I did not heave on the wheel and so over-steer, but that was something that one gets used to in about two minutes flat. Then all is plain sailing, the Rambler became a real delight to drive. The one thing that made driving a bit of a chore has been removed and I feel that I can take it absolutely anywhere without a qualm.

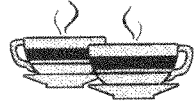
Thank you SVO, and a special thanks to Teresa for her charm and desire to help in every way possible. This is what I call real old-fashioned service, which I encounter more frequently than I used to many years ago.

*Nial Reynolds*

-----ooOoo-----

## VAN COOKER

*Sheila* received a letter from an A-S owner who does NOT want to become a member of the Club. He writes "I have a 1988 Rapport, and some time ago the special glass under the cooker control knobs shattered into little pieces. As a result I made enquiries of A-S and found that the cooker was no longer in production so a new part or cooker could not be provided. After following several fruitless leads I bought a new Spinflo Cooker from A-S. On returning home I found that the cooker was much smaller than the old one and a bit of carpentry was called for. Then came that sinking feeling when I found that the glass top was too small. Luckily A-S came to my aid and a new one arrived quickly. I now have in my shed an almost complete cooker and glass cover to go with it. As these cookers were fitted in several types of van someone somewhere could be having a bit of bother."



So if anyone is interested in a cooker, a letter to Mr J Bracegirdle at 23 Bro Waun, Waunfaur, Caernarfon, Gwynedd, LL55 4DQ might bring some interesting results. The reason that Mr Bracegirdle doesn't want to join is "the daunting prospects of the A.5 or the roads to Newtown or Welshpool and the fact that it takes us as long to get to the A.55 as it takes to travel along it as far as Chester." He goes on to say that he lives in a beautiful part of the country to come for a holiday but it is not so hot for the locals when the roads get choc-a-bloc with visitors. But he wishes the Club well in any event.

====ooo000ooo=====

## DRAUGHTS

May we tell you of our idea for keeping out the cold around the cab area in our Legend? We draw the existing curtains and then, because we have sewn white Velcro tape along the top of them, we fasten on a pair of long, thermal-lined thick curtains as well. These lined curtains fall right down to the floor keeping out any draughts from the wells inside the doors and the keep out the cold from the windscreen. It is amazing how cold it is behind the curtains at night - we feel it when we sneak a hand through to change a tape! In the morning we simply pull off the long curtains, fold and store them in a plastic bag in the overcab area.



*Doreen & David Palmer*

There we go again! A simple idea which is worthy of note for anyone who suffers from the cold. But in this day and age, why not take a small battery tape (or disc) player and keep the hand in the warm, too!

-----ooo0000oo-----

## FUMES

*Peter Noakes*, another new member, is looking for a bit of help. He has a Utopian LE based on the Bedford CF250 with a petrol engine and is suffering from fumes getting into the driving area particularly. He thinks that they are caused by oil leaks getting on to the hot parts of the engine and exhaust pipe. He has spent quite a lot of time (and money) trying to cure the problem but without success. He now adds an oil stop addition to the oil and all the oil seals have been renewed. This has helped but not fully cured the problem. The position of the exhaust pipe under the engine doesn't help as any oil leaking from the engine drops straight on to it. If anyone has managed to cure the problems, please telephone *Peter* on 0428 604 102 or write to him at Stanway, Salford Road, Hindhead, Surrey, GU26 6RD.

Before we had the VW Clubman we had one based on the Bedford CF2 chassis, also with a petrol engine, but I don't remember any particular problem with fumes inside the van. Maybe I had just got used to them, having previously had a couple of the old oily CA vans!

-----ooo0000ooo-----

## BRANDS HATCH JAMBOREE

Peter Doman has sent me a News Item about the Jamboree which is from 30th April to 2nd May 1994. The A-S range will be on show together with 'a fabulous range of used Auto-Sleepers', accessories and ancillary services. There is non-stop entertainment with something for everybody to do from morning till night. For day visitors the admission and parking is absolutely FREE. Alternatively you can camp from Friday through till Monday for just £15. For further information contact the Jamboree hotline on 081 311 6002. Peter says that the Jamboree is looking forward to seeing as many A-S owners as possible.

He also sent me a picture of the A-S display which cannot be printed in the Newsletter. This gathering is on our list of rallies but unfortunately there is no marshal available for it.

-----ooo0000ooo-----

## FOUR-WHEEL DRIVE

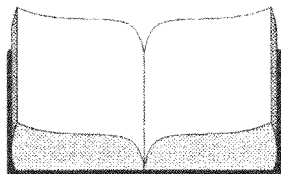
There must be a few among our members who have experience of a 4WD Express or Ducato. I wonder whether someone would write a note for the Newsletter on such basic things as the traction in difficult conditions, handling on the road, fuel economy (or otherwise!) and similar. I believe that there are no more 4WD chassis available to the expiring Sevel design but perhaps there will be such an option with the new one.

*Barry Crawshaw*

It would be a most interesting article, so come on, one (or more) of our members, pens in hand, paper on table and get cracking, please. (Alternatively use pencil, typewriter or word processor but let us have your experiences.)

====ooo000ooo=====

### PEUGEOT-TALBOT MANUAL



I have recently purchased a 1985 CXL based on the Peugeot Talbot van. As I do all my own repairs I need a workshop manual. Usually I get one published by Haynes but they haven't produced one for the Peugeot. Has any member a manual that they wish to sell, please? If so, will they please telephone me on

0342 832 470 (any time) or write to 4 Headland Way, Lingfield, Surrey, RH17 6BP. Many thanks.

*Richard Sugden*

====ooo000ooo=====

### STILL ON TALBOTS

Can any canny reader help me out with a couple of things I don't seem to be able to get sorted out on my relatively new-to-me second hand 1986 Sportsman based on the Talbot Express? It seems to me that the advice given in the pages of the Newsletter is often more tested than that of some mechanics in garages...

1. Does the Talbot Express always accelerate like a slug? It cruises easily but think of overtaking or maintaining speed on an incline on the motorway and you might as well give up before you start. Petrol consumption is remarkably high, too, probably about 20-23 mpg on long journeys.

2. The liquid in the cooling system disappears! Where does it go? I have had they system pressure tested and there seems to be no evident

leak. I have changed the cap on the reservoir too but still it slowly empties. No problem with starting except for rather a lot of exhaust. New thermostat and no, I don't drink it late at night.....

3. Any ideas on the source of a leak around the front wheel arch, near the bonnet opening lever and how to prevent it?

4. The access to the three shelves on the left side of the cooker are narrow and awkward. Has anyone a method for making them more accessible for storage - and the same for the narrow shelf under the drawer under the cooker?

5. How can the space under the sink, where the pump and pressure switch are located, best be used? Can those items be squeezed into the back and boarded over to give another cupboard, and if so what do you do if you need to adjust either?

6. Has anyone a guide to the fuses and electrics board over the fridge. Also where would a gas heater be fitted if one were put it?

7. Does anyone keep a clipping file of items from the DIY sections of the commercial motorcaravan press regarding the Talbot Express of which I could perhaps obtain copies?

8. Haynes don't produce a manual. Is it possible for the Club, or the Company maybe in conjunction with other converters, to persuade them to produce one - soon! The version produced by Talbot seems very hard to get and perhaps overpriced. Haynes manuals are much more user friendly with the illustrations, diagrams and hints based on experience. There MUST be a market for such a manual - mustn't there?

9. And finally, how about a survey of the ferry services to and between the Scottish Islands?

*Elizabeth Allen*

I passed a copy of this letter on to a member who is quite a dab hand at DIY adjustments to improve the vehicle and who also has a Sportsman but I'm told that he could not answer all of the questions above. So over to you experts out there - you will probably have the answers. The Scottish ferries seems quite a good idea but there is a large number of them and I'm not sure whether there is much in the way of competition for comparison purposes. It has always seemed to me that if you want to go, say, from Oban to wherever you have to take the ferry that goes there - and pay the fare charged. Whereas with the

other routes to the continent and Ireland, you do at least have a chance to seek out the cheapest.



-----ooo0000oo-----

The organisers of the seven-day holiday rallies wish it to be known that you do not have to sign up for the whole seven days, you can come for one night or however many suits your timetable. Just ring the marshal and get clearance before booking and, if you are interested, ask if extra days can be tacked on at the rally rate.

The organisation of the Isle of Wight Holiday Rally is a little different from normal, insofar as you are asked to book direct with the site, in the person of Mrs Jacqui Ellis, a former Club member. She will take your booking and give advice on ferries and other related matters, if requested. Our Rally Marshal will be *Mrs Vivien Price*. She and her husband *John* will be arriving at the site in their *Talisman* on Sunday, 5th June ready to collect your rally fees when you arrive for the start of the rally on Monday, 6th June. If you wonder why a seven day rally should run from Monday to Monday, all will become clear when you know the ferry fares! The comment above about the length of your stay applies.

The rally at Waples Mill, Margaret Roding, which was to have run from 5th - 7th August has had to be cancelled due to unforeseen circumstances.

*Phil Daley*

The forthcoming rally at Stover International, Newton Abbot from 20th - 26th May 1994. The site contains a games room, free heated swimming pool, luxury toilet blocks, a grocery shop, licensed lounge bar, cafe and take-away. Next to the site is the Stover 18 hole golf course which is open to members of recognised clubs - golfers remember to bring your membership cards! Fishing is available adjacent to the site by permit. "Trago Mills" is close by which is a shopping precinct which sells just about everything at cut prices including Petrol and Diesel which will help with your touring in the area. Tourist attractions include Torbay (8 miles) Exeter (13), Dartmoor (12), Plymouth (24) and the River Dart area. There is a cut price food/grocery store next to the site so all your needs are catered for.

*Carol & Gordon Hooper*

# AUTO-SLEEPER OWNERS' CLUB

## RALLY SUPPLEMENT

Mid-April - Mid-June 1994

### **22nd/29th April; Isle of Avalon, Glastonbury, Somerset. 7-Day Holiday Rally.**

Site fee: £5.00 per night (Hard standing). Electricity: £1.60 per night. Rally fee: £1.50

Top class site, easy walk to town, Abbey and Tor.

Booking slip to: Mr & Mrs D Lucas, Hollinghurst Court, 256 Sedlescombe Road North, St Leonards on Sea, East Sussex TN37 7JL. Telephone: 0424 753 631 Cheque payable to: D Lucas.

Directions: From centre of Glastonbury take B3151 for 1,000 yards. Turn Right at sp Godney. Site on Left in 100 yards.

### **29th April/2nd May; Burn Gliding Club, Selby, North Yorkshire. LIMIT 20 VANS**

Site fee: £3.00 per unit per night. No electricity. Rally fee: £1.50

Parking on grass but hard standing available if wet. Clubroom, bar & toilets. Pie & Peas in clubroom on Saturday night. Glider flights £18 during weekend.

Booking slip to: Mr A W Guest, 27 Chiltern Drive, Ackworth, Pontefract, W. Yorks WF7 7DW.

Telephone: 0977 612 773 Cheque payable to: A Guest.

Directions: M62 exit 34 take A19 towards Selby. Gliding Club signposted in Burn village.

**30th April/2nd May; Motor Caravan Jamboree, Brands Hatch.** Usual booking conditions apply, see motor caravan press.

**6th/8th May; National Motorhome and Tourer Show, Peterborough.** Complete booking form in M M M, mark form clearly "A-S O C" and send to Warners to arrive by 7th April. Club rate £13.00 for 2 or 3 nights, £6.50 for 1 night. Complete Club rally slip and post with £1.50 rally fee to our marshals:- Mr & Mrs S Crouch, "Sydney", Sylvan Close, Higher Heath, Whitchurch, Shrops. SY13 2TB Telephone: 0948 840 894 Cheque payable to: A Crouch. No arrivals before 3pm on Thursday, 5th.

**6th/8th May; Riverside Park, Satchwell Lane, Hamble, Hants.**

Site fee: £7.50 per van (2 persons) for the weekend. No electricity. Rally fee: £1.50

Greenfield site. Meal on Friday evening at RAF Yacht Club one mile from site at 7:30, £8.00 per person.

Please ring marshal before sending in rally slip.

Booking slip to: Mr & Mrs C Denton, 34 Charles Knott Gardens, Hulse Road, Bannister Park, Southampton. SO1 2TF. TELEPHONE: 0703 224 621 Cheque payable to: C Denton

Directions: From Junction 8 of M27 take B3397 to Hamble.

**13th/15th May; Bentley Wildfowl and Motor Museum, Halland, East Sussex.**

Site fee: £2.00 per unit per night. No electricity. Rally fee: £1.50

Booking slip to: Mr H Henthorne, 144 Devonshire Hill Lane, London N17 7NH.

Telephone: 081 808 9112 Cheque payable to: H Henthorne

Directions: From London on A22 look for signs to turn Right just after end of Uckfield by-pass. From Eastbourne on A22 look for signs to turn Left just after Halland. From Brighton/Newhaven/Lewes look for signs to turn Right just before reaching A22.

The price of admission to Bentley will be discounted on production of your Club membership card. Walk through Glyndebourne woods (bluebell time). A simple meal (limited number) on Saturday evening. Bluebell Railway and South Coast nearby.

**13th/15th May; Laneside Caravan Park, Hope, Castleton, Derby.**

Site fee £4.00 per unit per night. Electricity: £1.00 per night Rally fee: £1.50

Excellent site in Peak District National Park. Meal arranged for Saturday night in Pub half a mile from site, price around £3.50 to £6.50 per head.

Booking slip to: Mr & Mrs V Kaye, 14 Firthwood Road, Coal Aston, Sheffield, S. Yorks S18 6BW.

Telephone: 0246 412 679 Cheque payable to: V Kaye

Directions: Site off A625, Chapel-en-le-Frith/Sheffield road, near Hope village.

Please note A625 closed at Castleton so from North-west approach by A6 to Buxton then B6049 to Tideswell and Bradwell then Left onto A625.

**20th/22nd May; Castle Hedingham, near Halstead, Essex.**

Site fee: £3.25 per night. No electricity. Rally fee: £1.50

Booking slip to: Mr & Mrs I Ross, 33 Grosvenor Gardens, Upminster, Essex RM14 1DL

Telephone: 0708 228 075 Cheque payable to I Ross

Greenfield site within castle grounds. Own toilets essential. Fee includes entry to castle. Cream Teas available @ £2.75 per head - advise marshal if teas required when booking. Pleasant walks.

Directions: One mile East of A604, Chelmsford/Cambridge road. About 4 miles North of Halstead.

Castle built about 1140 by de Veres, Earls of Oxford. Attractive medieval & Georgian houses in village.

**20th/26th May; Stover International, Newton Abbot, Devon. 7-Day Holiday Rally.**

Site fee: £4 per night. Electricity £1.85 per night. Rally fee £1.50

Heated swimming pool, golf & trout fishing on site. Out-of-town shopping complex (including cheap fuel) nearby. Dartmoor and Torbay within easy reach.

Booking slip to: Mr & Mrs G Hooper, "Hunters Moon", 12 Wrefords Close, Exeter, Devon. EX4 5AY

Telephone: 0392 213 417 Cheque payable to: G Hooper

Directions: From A38 (Exeter/Plymouth section) take A382 towards Newton Abbot. In 600 yards turn Right at sign "Trago Mills". Site on Left.

**20th/26 May; Lytham 7-Day Holiday Rally, Lions Club, Lytham, Lancs.**

Site fee: £3.25 per van. No electricity. Rally fee: £1.50

Booking slip to: Mr & Mrs N Benyon, Holmfield Cottage, Bannister Street, Lytham, Lancs. FY8 5HQ

Telephone: 0253 736 245 Cheque payable to: K Benyon

Directions: Leave M55 at Jnc 4. Signal right at traffic lights but be ready for sharp left turn signed Ballam.

At T-jnc turn right; in 1 mile fork right at jcn then site on left in 50 yards. Close to town centre.

**26th/30th May; Beverley Racecourse, Beverley, North Humberside.**

Site fee: £4 per unit per night. No electricity. Rally fee: £1.50

Booking slip to: Mr B McLean, 47 Westlands Road, Sproatley, Hull. HU11 4XG

Telephone: 0482 813 791 Cheque payable to: B McLean

Toilets and washbasins available.

Directions: Race Course North side on A1035/A1079 Beverley to York road 2 miles West of Beverley.

Owners & Trainers Entrance at the end of the Main Stand.

Meal on site on Saturday and room on Sunday night.

**6th/13th June; Southland Camping Park, Newchurch, Sandown, Isle of Wight. 7-Day Holiday Rally.**

Site fee: 3.50 per night. Electricity: £1.60 per night. Rally fee: £1.50

Book direct with site (address above). Contact Jacqui or Tim Ellis for advice on site, ferries etc

Telephone (site): 0983 865 385 Ferries from Portsmouth or Lympington.

Rally marshal: Mrs Vivien Price, 5 Lightwoods Road, Bearwood, Warley, West Midlands B67 5AY

Telephone: 021 420 2596 (please see note in April Newsletter)

**10th/12th June; Midland Railway Trust, Butterley Park, Ripley, Derbys.**

Site fee: £1.75 per van per night. No electricity. Rally fee: £1.50

Booking slip to: Mr H Henthorne, 144 Devonshire Hill Lane, London N17 7NH

Telephone: 081 808 9112 Cheque payable to: H Henthorne

Licensed buffet (with toilets) nearby. Directions to site will appear next month.

**10th/12th June; Motor Caravan Fair, The Racecourse, Stratford-upon-Avon, Warwicks.**

Details to follow. The Club has no marshal, yet.

Rally: ..... Date: .....

Your name and address (please PRINT) .....

.....

..... Post code. ....

Membership No: ..... Phone No: ..... Van Reg: .....

Day/Time of arrival .....

In the event of an emergency at the rally whom should we contact?

Name. .... Phone: .....

*Please complete both sides of the form!*

-----  
Rally: ..... Date: .....

Your name and address (please PRINT) .....

.....

..... Post code. ....

Membership No: ..... Phone No: ..... Van Reg: .....

Day/Time of arrival .....

In the event of an emergency at the rally whom should we contact?

Name. .... Phone: .....

*Please complete both sides of the form!*

-----  
Rally: ..... Date: .....

Your name and address (please PRINT) .....

.....

..... Post code. ....

Membership No: ..... Phone No: ..... Van Reg: .....

Day/Time of arrival .....

In the event of an emergency at the rally whom should we contact?

Name. .... Phone: .....

*Please complete both sides of the form!*

Is this your first A-S O C rally? Please tick box YES  NO

Number of people in your van: Adults  Children

Extras: Please indicate which you would like, **if available**:

Electricity: Yes  No  Saturday night meal if any: Yes  No

Have you any special needs? Yes  No  If 'Yes', please specify:-

.....

Payment **MUST** accompany this slip - cheques payable to marshal.

POST FORM TO REACH MARSHAL 10 DAYS BEFORE EVENT

✂-----

Is this your first A-S O C rally? Please tick box YES  NO

Number of people in your van: Adults  Children

Extras: Please indicate which you would like, **if available**:

Electricity: Yes  No  Saturday night meal, if any: Yes  No

Have you any special needs? Yes  No  If 'Yes', please specify:-

.....

Payment **MUST** accompany this slip - cheques payable to marshal.

POST FORM TO REACH MARSHAL 10 DAYS BEFORE EVENT

✂-----

Is this your first A-S O C rally? Please tick box YES  NO

Number of people in your van: Adults  Children

Extras: Please indicate which you would like, **if available**:

Electricity: Yes  No  Saturday night meal, if any: Yes  No

Have you any special needs? Yes  No  If 'Yes', please specify:-

.....

Payment **MUST** accompany this slip - cheques payable to marshal.

POST FORM TO REACH MARSHAL 10 DAYS BEFORE EVENT

This is a nice area to tour - we have some friends who live fairly close and we have been around there quite often. Also I was evacuated to Paignton for a short time way back in Nineteen-good-heavens-it-can't-have-been! But in those days I had to walk everywhere! (No van, No bicycle, No petrol but most of all NO MONEY!).

#####

## WINTERING IN SPAIN



Although we have owned an A-S for a few years we are relatively new members. We attended four rallies in 1993 and have so far booked four more in 1994. Our thanks go to *June & Tom Pycock* for making us so welcome at the Club & Company rally at Malvern; we have gone on from there. Thanks to everyone for being so kind.

We have just returned from our fourth year of spending January and February in Spain and have been surprised at the small numbers of A-S vans seen in the south of Spain. There are thousands of British people and hundreds of motor homes and campers in Spain but we only saw five other Auto-Sleepers but dozens of other makes. We stayed for part of our time at the British owned site at Los Gallardos near Jojacar together with an average of 70 other British long stay campers. The site has a bar, restaurant, swimming pool and shop. The owners provide an information sheet of suggested 'runs out'. There are language classes and keep fit (fun!) classes. We attended a barbecue on the site and there are many other activities if you wish to take part. A week's stay in winter costs £24 including 5 amp electricity (10 amp at extra cost) and then from £3.00 to £3.50 per night for extra nights.

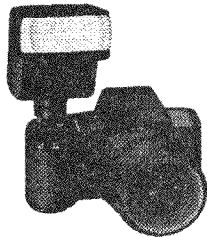
If there is sufficient interest for February 1995 my wife and I will be willing to stay on this site for, say, three weeks and organise a winter rally. Members would book their own ferry crossings and just turn up on a 'do as you please' basis. If anyone is interested will they drop us a line or phone before the end of June 1994 and we will start organising as necessary.

*Betty & Geoff Scholey.*

Sounds like a very good idea - particularly if 1995 February is going to be like that for 1994!! If you want to write, the address is 4 Broughton Fold, Grassington, Skipton, North Yorkshire, BD23 5AL and if you telephone ask for Mr or Mrs Scholey SENIOR.

====ooo000ooo====

## PHOTOGRAPHY



Now that the better weather is approaching, I should like to remind PHOTOGRAPHERS that we run a COMPETITION each year with three modest prizes. The PHOTOGRAPHS must show an AUTO-SLEEPER in an INTERESTING PLACE. It can be pretty, funny or embarrassing. The quality of the picture will be taken into account and the selection will be by any panel of Club members that I can gather together towards the end of 1994. Last year the photographs were displayed anonymously on a board and the committee members and their wives/husbands completed slips showing their preferences.

Please send photographs to me at 46 Ulverley Green Road, Solihull, West Midlands, B92 8BQ and write your name and membership number on the back **MAKING SURE THAT THE INK OR BALL-POINT IS PREVENTED FROM MARKING THE NEXT PHOTOGRAPH.** All photographs will be returned at the end of the year and the winning photographs may appear in the Auto-Sleepers Limited magazine or on the Club Page in a motor caravan commercial publication, with suitable acknowledgement.

*Rita Daley*

And from the same pen comes this:

I think that Auto-Sleepers Limited are to be congratulated for taking the show at the National Exhibition Centre in Solihull seriously. It is the centre of a wide motorway network, easy to find, and parking was free with buses continually circulating to collect passengers from the car park to the Exhibition entrance and vice versa. The upper floor where the caravans and motor caravans were situated was full of interest and if other converters follow the example of the few represented at the N.E.C. it will become an excellent shop window for foreign buyers as well as home ones. A few more accessory manufacturers and retailers would not have come amiss but this can only be a step in the right direction. (And it has nothing to do with my living just 2 miles away!)

The N.E.C. was less attractive to us than Earls Court - because of the distances involved. But E.C. suffered the same problem of lack of accessories and retailers. I believe it must be because the people who would otherwise attend have done their homework and considered the costs of (a) having a stand, (b) shifting their stocks (c) paying their staff fares and expenses and (d) losing business in their normal area. We know of one retailer who has given up E.C. for those reasons.

---==ooo000ooo==---

## HOW TO KNOW WHEN YOU ARE GETTING OLD

Everything hurts - what doesn't hurt doesn't work.  
The gleam in your eye is the sun shining in your bifocals.  
You feel like the morning after - but you haven't had a night before.  
Your little black book only contains names ending "MD."  
You get winded playing cards.  
Your children begin to look middle aged.  
You join a health club but don't go.  
A dripping tap causes an uncontrollable urge.  
You have all the answers, but no-one asks you the questions.  
You look forward to a dull evening.  
You need glasses to find your glasses.  
You turn out the light for economy instead of romance.  
You sit in a rocking chair and can't make it go.  
Your knees buckle - but your belt won't.  
Your back goes out more than you do.  
You put your bra on back to front - and it fits better.  
Your house is too big and your medicine cupboard isn't big enough.  
Your birthday cake collapses from the weight of the candles.  
You sink your teeth into a steak - and they stay there.  
I just want to live long enough to be a problem to the kids!

*Brian Harrison*, whose name I had better not publish, sent this gem in just before Christmas but I haven't had enough space until now. But from what I've seen of our members, there is no-one old enough to qualify on any of these counts. ALL of our members are just 27 - and a bit - in spite of what those certificate things might suggest.

---==ooo000ooo==---

## SLIDING TV'S

Can anyone who has a Flair answer a question for me? The flat surface over the fridge is just big enough for our new Fergusson 10" TV

but if we are not absolutely flat and level it tends to slide off. I was lucky and just caught it in time before it damaged itself. *Jock* is semi-disabled and is very partial to his TV! I need to know how to solve the problem and not just to make sure that the pitch is level because it very rarely is completely so. I need a simple solution.

*Margaret Laidlaw*

Simple Solution 1. Park so that the set tends to slide against the wall!! But seriously, get in touch with *Pru Osborne* who is our Regalia Officer. She has some special stuff for just that purpose which is now available as part of the goodies for members. I'm not sure what it costs but it isn't too expensive. It is a sort of netting which can be put under the TV set and on the shelf and it will stop the slide. Some time ago we used a similar stuff on the floor in our previous van to stop the cats' loo from sliding about - and it worked! Obviously, it won't work while on the move but it will hold it while parked.

====oooOOOooo=====

### CHAIRMAN'S CHAT

To keep me up-dated on the Rallies arranged, *Phil Daley* has let me have a list produced by a press of a button on his computer (I still stick with my card index system). I see that during 1994 some 47 rallies covering 159 nights are being held in the U.K. Plus one of 21 nights in the Republic of Ireland and one of 10 nights in Germany have been arranged. For all of these the Rally Marshals, all volunteers, are members of the Club. Additionally, there are 6 rallies which some Club members will probably attend, e.g. Motorhome shows or an ACCEO rally. Thank you to all these Rally Marshals and I do hope that your Rally is most successful.



I wonder if our Irish members felt neglected when the front cover of the March edition of the Newsletter featured 2, or perhaps 3, ladies in Welsh National Costume, obviously for St. David's Day. But what about St. Patrick's Day, or is the Editor keeping the Shillelagh and Shamrock for the June edition which is due to appear a day or two before the Irish Rally starts? I wonder where the letters ASOC will appear!!

It was interesting to read *Phil's* notes on ferry fares and on looking back through my notes I see that it is some 6 years since I could obtain such a cheap ferry crossing from Felixstowe to Zeebrugge. P&O European Ferry brochure advertises this crossing now as 'The Clipper Line to Europe' and I wonder if they are going to use one of the old Tea

Clippers, like the Cutty Sark, to keep the fares down.

One particular bargain, to my mind, is the 5 day return for a motorhome including driver and one passenger, for £61.00. With careful selection of your sailings you can travel, at these fares, in April, May, June, September and October; if you are a Shareholder it is even cheaper. Don't forget you can use ACCFO and obtain a discount - look at last month's Newsletter for full details.

*Phil* says his Insurance Company have now recognised the U.K. as being in Europe and, accordingly, you will not need a Green Card for travelling in Europe. They haven't encountered a minor Customs official on one of the small border crossings who insist on production of the Green Card; I have, and no amount of discussion would make him change his mind. I had been advised by the AA that one wasn't needed and maybe in the EC you might get away without one. But for some of the other countries I will still take one. I would suggest you check this point, **thoroughly**, with your Insurance Company,

Many thanks to *Margo Lumb* who has volunteered to run the Bric-a-Brac Stall at the Club and Company Rally 1994 and I thank her too for her quick response to my request in the last Newsletter. *Margo* will require some assistance on this Stall and if you will help her, please let her know by telephoning her on 0244 880 442 when, I am sure, she will be pleased to hear from you. Let her know when you are available (you can agree the times with her) - the Stall will be open from 2.00 pm to 5.00 pm on Friday and from 9.00 am to noon on Saturday. She will be pleased to receive saleable items at the Rally while the stall is open.

Shall I see you at the AGM?

*Arthur Irving*

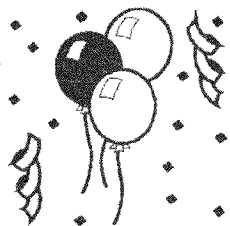
Just a couple of observations. One, **ALL** our rallies are successful - it doesn't matter where or in what weather, the members attending make the rally and I haven't heard of a bad one yet. Even when floundering in mud and rain, they still enjoy themselves and each others' company. Two, Newsletter Covers. I have no control whatsoever over what actually appears. All I do is print the words on a suitable bit of paper and send it with the rest of the pages up to *The Daleys* where *Rita* does her stuff and puts the picture in. As for the famous letters, I wonder if with an Irish slant, we should refer to the McAuto-O'Sleepers Owners Club. Try something with the letters MOOC!

(On second thoughts, DONT!!)

And finally, if P&O want to use something like the Cutty Sark I only hope that the concrete surround floats! Or maybe that will become the car deck!

-----ooo000ooo-----

## CHILDRENS' CORNER



Sorry I haven't written anything for a while, we haven't been to a rally since the excellent one in South Wales last October half term. We had a lovely time and a good day out at St Fagans folk museum. The reason we haven't attended is that in a couple of weeks time I'm going to France with my school. This will cause us to miss Fell End and Honeybourne, too. We are also busy organising a 'Houghton Weavers' folk concert which my Dad is running on 30th April in Ellesmere Port. Selling tickets seems to be taking up a lot of our spare time!! Dad says if any ASOC members would like to come he will sell them tickets and recommend them a campsite not too far away!

Bye for now, I'll write again when we've been to a rally.

*Ruth Greenwood (Age 13)*

Thanks, *Ruth*, we shall look forward to your next offering. What about something to do with your trip to France? Perhaps you will notice a campsite there, or somewhere to visit. We shall wait and see!

-----ooo000ooo-----



1 - WOOL!

*Pam Robinson* wants wool of any thickness and in any amount to be knitted into blankets for the orphans in Romania. If you have some wool that you don't now want please bring it to the AGM where *Pam* will be delighted to receive it. You will easily find her, she is the lady in the wheelchair.

## 2 - WATER!

Can anyone advise whether they have had any problems with rain getting into the channels of the double glazed sliding windows of the Fiat Harmony, please? We bought ours almost two years ago and have not been able to find a cure. The windows in the high top, the sliding door and the opposite window are all affected, wetting the curtains in heavy rain.

We shall be grateful for any advice.

*Joyce & Geoff Green*

I can't think of anything except don't go out in the rain, but I'm sure that someone will have an answer!

====ooo000ooo=====

### **AN ANSWER TO THE CHILD SEAT BELT PROBLEM**

On page 11 of the March Newsletter *Joan Joselyn* writes of the problem of the lack of diagonal seat belts in the back of her Rimini. I have sent her a photo-copy of the "Vario" restraint which is like a bridge over a child's lap held in place by a lap belt and suitable for children from three to seven years old. They are available from The In-Car Safety Centre in Milton Keynes and the telephone number is 0908 220 909. I kept the article from the AA Magazine of Spring 1993 which showed a variety of car seats.

We were interested to see the comment about the few Renault vans about as we only exchanged our Rapport three years ago after many years of pleasure. A picture of it was printed in MMM December 1989 on page 8 showing the rear awning we had had made to our specifications which luckily fits onto our Harmony. When we bought our first Renault in 1983 (a H\*\*\*dsw\*\*th Ro\*\*nce which we were able to replace after our garage doors were blown off and replaced with taller ones) we found great interest being taken by other campers in France where they had not started to make conversions of the Renault van. We made the change only after taking a liking to the extra facilities available in the Harmony, such as the crosswise bed, as we are able to use the van so much more after retiring.

*Celia & David Matthews*

See, someone usually has the answer, if only we ask the appropriate question!

====ooo000ooo=====

## A.C.C.E.O.

What do you mean, you don't know what ACCEO means? The letters stand for "The Association of Caravan and Camping Exempted Organisations" and that includes ASOC. I've just received, via our Chairman, a copy of the Spring 1994 Newsletter and on page 3 they mention the ASOC Newsletter and our comments about the "20ft Rule" with which they entirely agree. Their recommendation is that there should be a clear space of not less than 20ft between the facing walls of vans and/or awnings. Like us, they don't like to see two awnings adjoining each other to give a greater covered space.

They also referred to a damaging article which was published in the 12th September 1993 issue of "The Sunday Telegraph". Apparently this concerned the fact that "Caravan legislation is hopelessly out of date and needs attention", a point with which ACCEO does not disagree. They try to ensure that all member clubs obey the rules so that there can be no criticism but unfortunately it doesn't always work out. One member club organised a 15 day holiday rally in North Cornwall in an extremely 'sensitive' area. ACCEO knew nothing of this until a complaint reached them routed via the Local Authority and the D of E. The Club concerned believed that they were actually rallying on a Licensed Site and the site owner assured them that their rally would be legal. They took the word of the site owner without checking and rallied in a field adjacent to the licensed site. Unfortunately another club which is not an ACCEO member was also on site rallying at the same time and this, not unnaturally, inspired local residents and campaigners against caravans to complain.

It is absolutely necessary to make sure that the site owner is not using a caravan rally illegally to increase the number of vans for which he is properly licensed. If any club is party to allowing commercial site owners to exceed the number of vans for which they are licensed, and this results in complaints reaching the ears of the D of E, the offending club will almost certainly be asked to resign from ACCEO and it might find problems when trying to renew the Certificate of Exemption. So, for the sake of the good name of ASOC, please make sure that if you are thinking of marshalling a rally on a licensed site, the numbers accepted do not exceed the number for which the site is licensed - always allowing for other, non club members, who may already have booked onto the site. This matter will need to be discussed by your Committee in rather more detail. We shall keep you informed.

ACCEO have also had to change the venue for the Annual Meeting and Rally which was due to be held at Market Rasen Racecourse. It will

now be held at the Lakeside Holiday Park, North Somercotes, Louth which is on the A.1031 between Mablethorpe and Cleethorpes. The host club is the Mustang Caravan Owners and the date remains the same - 14th-16th October 1994. The cost for the weekend is £13.00 per outfit.

I was also amused to see, in the list of new member clubs being welcomed into the ACCEO fold, that in addition to ASOC there is the Bristol Aerospace Welfare Assoc.C.C. As this was printed on two lines, the second read "Assoc.C.C." and I began to wonder if my eyes were seeing things!

====ooo0000oo====

Enflite Bicycle rack as used by discerning members on the rear of Legends and Talismans. It mounts simply and without drilling or damaging the glass fibre body. £45.00

De Luxe Silver Screen insulated cover for Legend. £50.00.

Telephone Reg Rogers on 0784 454 400 anytime or write to him at 11 Broomfield, Octavia Way, Staines, Middlesex, TW18 2QD.



#####

Talisman GL. 2 litre Petrol. 'G' reg - 1990. 22,750 miles. 4 berth. Full specification. £17,000.00. Write to George Greenwood at 23 Westminster Crescent, Burn Bridge, Harrogate, HG3 1LX or telephone him on 0423 872 404.

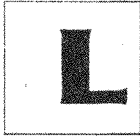
#####

Ford Legend, 1991 'J' Reg. 7,680 miles only. Full specification and includes cassette/radio. Silver Screen included. Ill health forces reluctant sale for £18,500.00. Write to Roy Cull at 11 Windsor Close, Sudbrooke, Lincoln, LN2 2YD or telephone him on 0522 595 175.

====ooo0000oo====

## **A.G.M.**

Don't forget that you will need your Membership Cards when you attend the Annual General Meeting. You will be required to produce them when you enter the meeting room, so please make sure you have them ready.



As you may have noticed, I am experimenting with a different computer setup to produce the Newsletter. I hope you like it and will forgive any mishaps which you have seen!

And that's about it for another month. See you at Uttoxeter, I hope! Till then, and always, keep safe.

Your Editor  
Harry Henthorne  
144, Devonshire Hill Lane  
London, N17 7NH  
Tel: 081 808 9112

---

Any item appearing in this Newsletter may be freely used by other publications. Please acknowledge both Author and Source.

---

### DISCLAIMER

All contributions from Members which appear in the Newsletter are published in good faith in the hope that they will prove useful or interesting. All reasonable care has been taken to ensure accuracy but none of the modifications has been tested by us therefore neither the Editor, the Club nor the Company will accept any responsibility for the consequences if you try them out.

---

#### Committee Members Telephone Numbers:

Carol Bowler	Secretary	021 745 8369
Steve Bowler	Ferry Booking Officer	021 745 8369
John Cox	Vice-President	0283 712 394
Rita Daley	Vice-President	021 706 1816
Philip Daley	Public Relations Officer	021 706 1816
John Edden	Asst. Rally Co-Ordinator	0827 65 850
Sheila Henthorne	Membership Secretary	081 808 9112
Harry Henthorne	Newsletter Editor	081 808 9112
Arthur Irving	Chairman	0742 365 698
Tony Jones	Rally Co-Ordinator	0793 763 032
Prudence Osborne	Regalia Officer	0980 620 646
John Tidbury	Treasurer	0235 525 730
Charles Trevelyan	President	0376 853 338
Bob Williams	Chairman, AGM Sub	0507 442 960
Janet Sutterby (Co-opted)	Minutes Secretary	0242 602 449