



HINTS AND TIPS SERIES

NUMBER THREE

The information provided in this document is, to the best of the Auto-Sleeper Owners' Clubs knowledge, comprehensive and accurate. However, no responsibility can be accepted for any loss or damage incurred during the implementation of the described actions

GUIDE TO TO FILLING YOUR LPG TANK

This Information has been provided by Auto-Sleepers
It is also available in your vans operating manual

LPG RE-FUELLING

LPG re-fuelling is simple and efficient, carried out in much the same way as petrol and diesel with a hose and nozzle designed to lock onto the filling connector on the vehicle. The refuelling point is located behind a black plastic cover on the offside of the vehicle behind the driver's door.

Once the connection is made, the customer simply presses and holds down a button on the dispenser until they have put the required amount of fuel into the vehicle or until the tank is full.

LPG tanks are fitted with a valve that stops the flow once the tank has reached its maximum safe filling level. Once the meter stops the customer simply disconnects the nozzle and returns it to the dispenser.

Note: Although the nominal capacity of the tank is 25 litres, a float valve automatically cuts off at 80% full to allow space for the gas vapour above the liquid. Therefore, the maximum amount of LPG which can be put into the tank is 20 litres.

There is a gauge for the LPG tank, fitted at the right hand side of the dashboard, which uses LED lights to indicate the fuel level.

Safety Note

- When arriving at the Autogas dispenser ensure the vehicle is parked with the filling connector located nearest to the dispensing pump.
- Apply the handbrake and switch off the engine. If the Combi space heater is running it will turn off automatically. It will need to be re-started at the control panel after the engine has been re-started.
- No smoking, naked flames or mobile phones are allowed on the Service Station forecourt.
- If the re-fuelling process will take longer than 15 minutes (ie with the ignition off) then turn the refrigerator off at its main switch in order to prevent it from switching automatically to the alternative energy source of gas and producing an ignition spark.
- The use of an adaptor in the UK is not recommended.

Please Note

- For European touring, adapters for use with the UK bayonet filling connector may be used temporarily.
- Refilling of portable LPG cylinders is not allowed.
- All dispensing nozzles should be fitted with a nozzle shield. Please report to staff if missing.
- When disconnecting from the the van filler point, you will experience a small amount of gas blow back from the nozzle

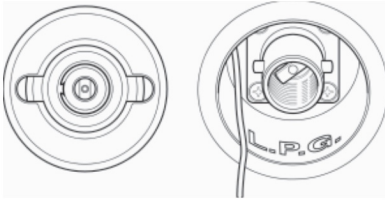


LPG underslung tanks

A member kindly compiled this little table, which may help to interpret the LEDs. But it depends upon the tank being set at the correct angle. But please remember this is only a guide and maybe different for your tank.

Red LED only (not normally on):	say 4 litres left
1 green LED: 2 litres (plus reserve of 4)	= 6 litres left
2 green LED: 4 litres (plus reserve of 4)	= 8 litres left
3 green LED: 6 litres (plus reserve of 4)	= 10 litres left
4 green LED: 8 litres (plus reserve of 4)	= 12 litres left
5 green LED: 10 litres (plus reserve of 4)	= 14 litres left
6 green LED: 12 litres (plus reserve of 4)	= 16 litres left
7 green LED: 14 litres (plus reserve of 4)	= 18 litres left
8 green LED: 16 litres (plus reserve of 4)	= 20 litres left

Filling Nozzles

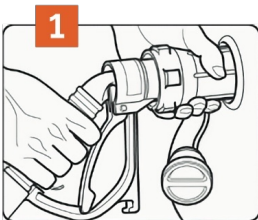


When connecting the nozzle to the filler valve on your vehicle always check that the locking pins are aligned.

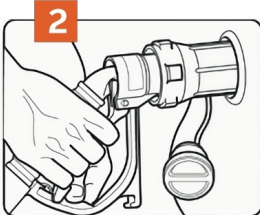
There are two main types of filling nozzles used in the UK - 'Gas Guard' and 'De Visser'. Gas Guard uses a rotating barrel to lock on to the filler valve whereas De Visser uses a lever.

Gas Guard nozzle filling instructions

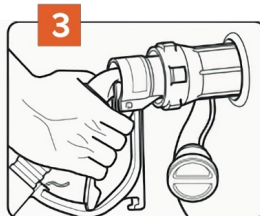
Ensure Gas Guard nozzles are fitted with protective nozzle shields. Report to site staff if missing. (*Nozzle shields have been removed from picture for clarity*).



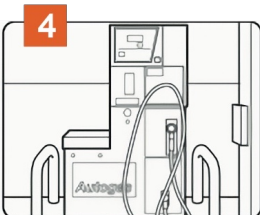
1 Connecting: Push nozzle over the lugs on the filler valve and turn barrel a quarter turn clockwise to lock. Do not squeeze lever before nozzle is connected. Caution: From this moment onwards ensure hands are away from the nozzle barrel.



2 Pull back lever and latch into place. Ensure lever is latched securely. Follow instructions on dispenser to commence dispensing.

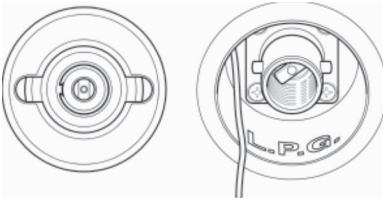


3 Disconnect: Ensure hands are away from the nozzle barrel. Caution: When dispensing has ended, squeeze back lever and release latch. Release lever fully. A small release of gas will occur as you release the lever. This is normal! Do not place hands on barrel until after the gas has been released



4 Turn barrel anti clockwise a quarter turn to release nozzle from vehicle. Replace nozzle in holder on dispenser.

Filling Nozzles

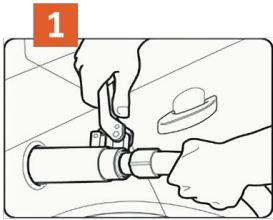


When connecting the nozzle to the filler valve on your vehicle always check that the locking pins are aligned.

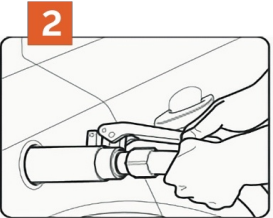
There are two main types of filling nozzles used in the UK - 'Gas Guard' and 'De Visser'. Gas Guard uses a rotating barrel to lock on to the filler valve whereas De Visser uses a lever.

De Visser nozzle filling instructions

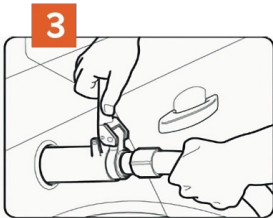
Ensure Gas Guard nozzles are fitted with protective nozzle shields. Report to site staff if missing. (*Nozzle shields have been removed from picture for clarity*).



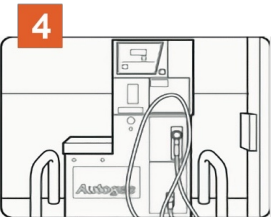
1 Connecting: Hold the hose behind the nozzle and the guard, keeping lever pushed forward with the handle at 12 o'clock position. Locate the nozzle over the lugs on the filler valve and turn the lever a quarter turn clockwise to lock.



2 Pull back lever towards hose and latch into place. Ensure lever is latched securely. Follow instructions on dispenser to commence dispensing.



3 Disconnect: Ensure hands are away from the nozzle barrel. Hold hose behind guard and release lever by pushing forward. A small release of gas will occur as you release the lever. This is normal, place hands on barrel until after the gas has been released. been released



4 Turn lever anti clockwise a quarter turn to release nozzle from vehicle. Replace nozzle in holder on dispenser.